

» HOLZHER ARTEA series

Complete machining with
a modern operating concept ◀

ARTEA 1020



Compact machine with modern units, zero joint and PUR processing as standard

» HOLZHER ARTEA series

Complete machining with
a modern operating concept ◀

ARTEA 1030



Complete processing incl. corner rounding and 3 finishing units

ARTEA 1020



- 1 Visual-Setting mode
- 2 Pre-milling unit FG101
- 3 Glu Jet-Hybrid-Technology
- 4 Trimming unit FR101
- 5 Scraper unit ZK101

ARTEA 1030



- 1 Visual-Setting mode
- 2 Pre-milling unit FG101
- 3 Glu Jet-Hybrid-Technology

- 4 Trimming unit FR101
- 5 Corner rounding unit
- 6 Scraper unit ZK101

BASIC MACHINE

Compact machine with zero joint as standard

The small, compact edgebander offers maximum ease of operation, precision and operational reliability. The ARTEA works with the same patented adhesive application nozzle that is also used in the larger models. The effortless cleaning of the adhesive system is a great added value right from the start.

With the modern user interface you have an excellent overview of your machine.

- Compact machine length:
ARTEA 1020: 3.1 m
ARTEA 1030: 3.6 m
- Edge height max.: 55 mm
- Workpiece thickness:
8 – 50 mm
- Workpiece width: min. 70 mm
- Workpiece length:
min. 180 mm
- Feed rate: 9 m/min
- Modern and robust machining aggregates
- Extendable workpiece support, distance 500 mm
- GluJet-Hybrid-Technology
- 15.6" touch display for easy operation
- Fast set-up of the machine with VISE (VIsual SETting mode)
- Torsion-resistant, welded machine stand
- Manual pressure bridge adjustment



TECHNICAL DATA

At a glance

	ARTEA 1020	
Control	Industrial PC with 15.6" touch screen	
Magazine	For roll and strip goods with single feed	
Pre-milling	Slide cutter, 50 mm	
Glue application	Glu Jet with thin film technology	Granule and/or cartridge chute
Pressure unit	2 pressure rollers, first driven	
Trimming	Single motor, linear guided	
Cutter	Multifunction, flush 5 mm / R2 mm	
Corner Copy	x	
Radius scraper	Mechanical incl. chip catcher box	
Surface scraper	Mission Controlled	
Buffing	Buffing unit	
Spraying device	Release agents, cleaning agents and lubricants	



The technical data are guide values. We reserve all rights to changes in design and equipment, because HOLZ-HER machines are subject to continuous development. Illustrations not binding. Some of the machines shown also contain special equipment not included as a standard feature. For clarity, some of the machines are shown without protective hood.

Standard
 Optional
 x Not possible

TECHNICAL DATA

At a glance

	ARTEA 1030	
Control	Industrial PC with 15.6" touch screen	
Magazine	For roll and strip goods with single feed	
Pre-milling	Slide cutter, 50 mm	
Glue application	Glu Jet with thin film technology	Granule and/or cartridge chute
Pressure unit	2 pressure rollers, first driven	
Trimming	Single motor, linear guided	
Cutter	Multifunction, flush 5 mm / R2 mm	
Corner Copy	Single motor, linear guided 45 mm	
Radius scraper	Mechanical incl. chip catcher box	
Surface scraper	Mission Controlled	
Buffing	Buffing unit	
Spraying device	Release agents, cleaning agents and lubricants	



The technical data are guide values. We reserve all rights to changes in design and equipment, because HOLZ-HER machines are subject to continuous development. Illustrations not binding. Some of the machines shown also contain special equipment not included as a standard feature. For clarity, some of the machines are shown without protective hood.

 Standard
 Optional
 x Not possible

EDGE CONTROL TOUCH

Control Edge Control BC 15

The powerful touch control lets you keep an overview of your machine. With the simple graphical user interface and the practical VISE mode, your aggregates can be set with repeatable accuracy.

- 15.6" touch control panel
- Graphical setting aid VISE (VIsual-SEtting mode)
- Powerful control with the simplest graphical operation
- Rotatable and tiltable control panel at eye level
- Quick adjustment between PUR and EVA
- Networkable
- Operator access with password protection

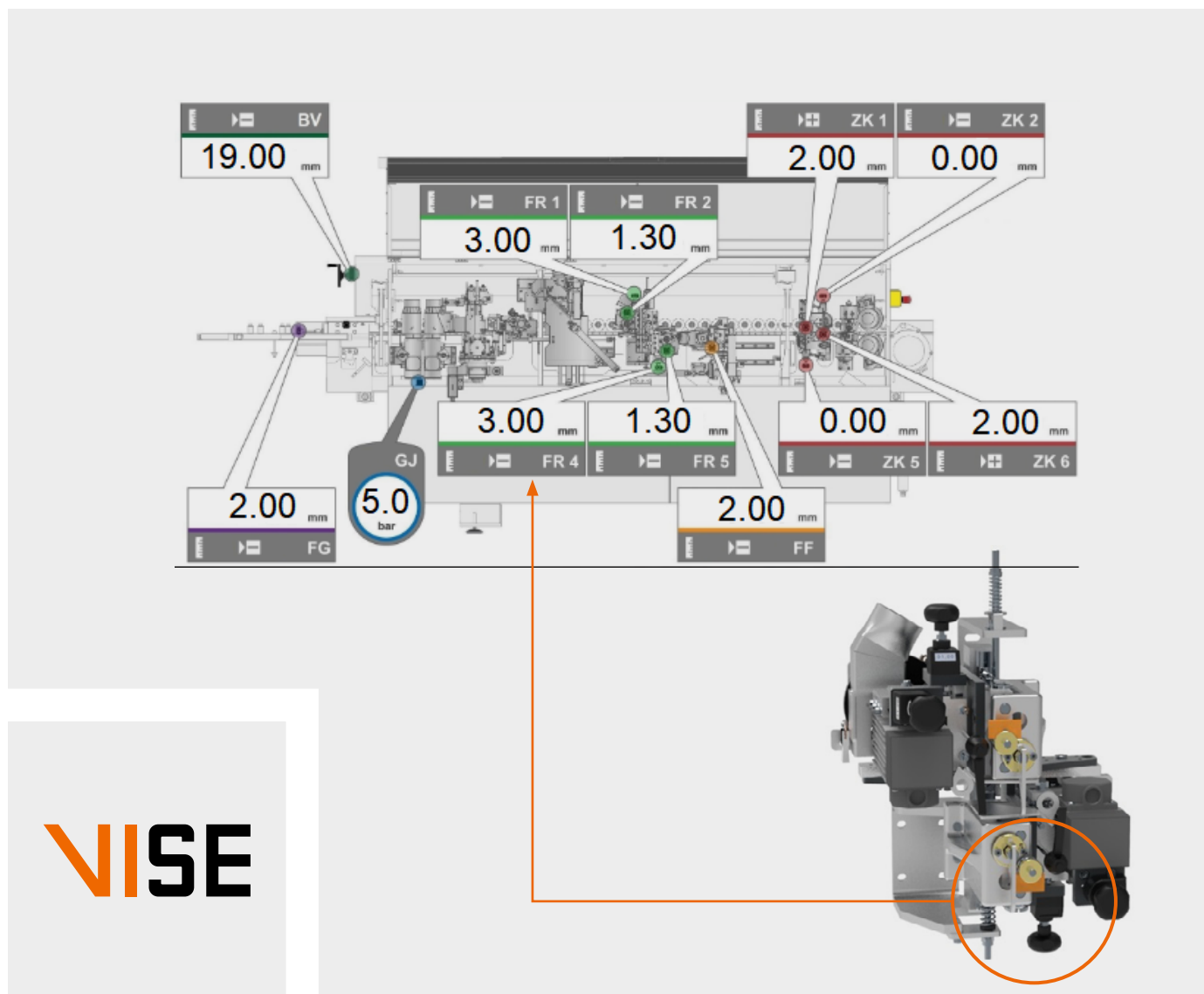


VISE

Visual-Setting mode

VISE provides as digital logbook all setting values for digital counter and pressure gauge. All aggregates can be easily assigned via the graphic display, so that the operator knows which control values have to be changed or accepted. At each program change, the operator is informed of the changed parameters.

- Interactive display via the touch control panel
- Setting aid of the entire parametrics of your machine
- Graphical assignment
- Optimal repeatable results



VISE

VIACOCKPIT – HOLZ-HER MACHINE MONITORING

Full transparency for your
future workshop

Productivity shown transparently on the master
computer and also on your mobile device, moni-
tor and analyze at anytime.

The WEINIG App-Suite and viaCockpit offer you
the possibility to always keep an eye on your
production flow and material management. The
system enables the monitoring and evaluation
of order data, increases production reliability
through maintenance instructions and optimizes
production. Thanks to open interfaces, the
system is future-proof and can be seamlessly
integrated into existing IT landscapes.

The viaConnector Edge is your link between the
machine and the viaCockpit. It offers you con-
venient access to your machine data and makes
it available locally or in the cloud at a destination
that you define individually.

EXPORT



For advanced data analysis, viaConnector
Edge lets you export your collected data as
a CSV file for transfer to ERP or SQL data-
bases at the touch of a button.



viaMonitor

For monitoring and
evaluation



viaNotify

Reports possible
errors



viaOrder

Provides an over-
view of the order
progress



viaMaintain

Informs about due
maintenance



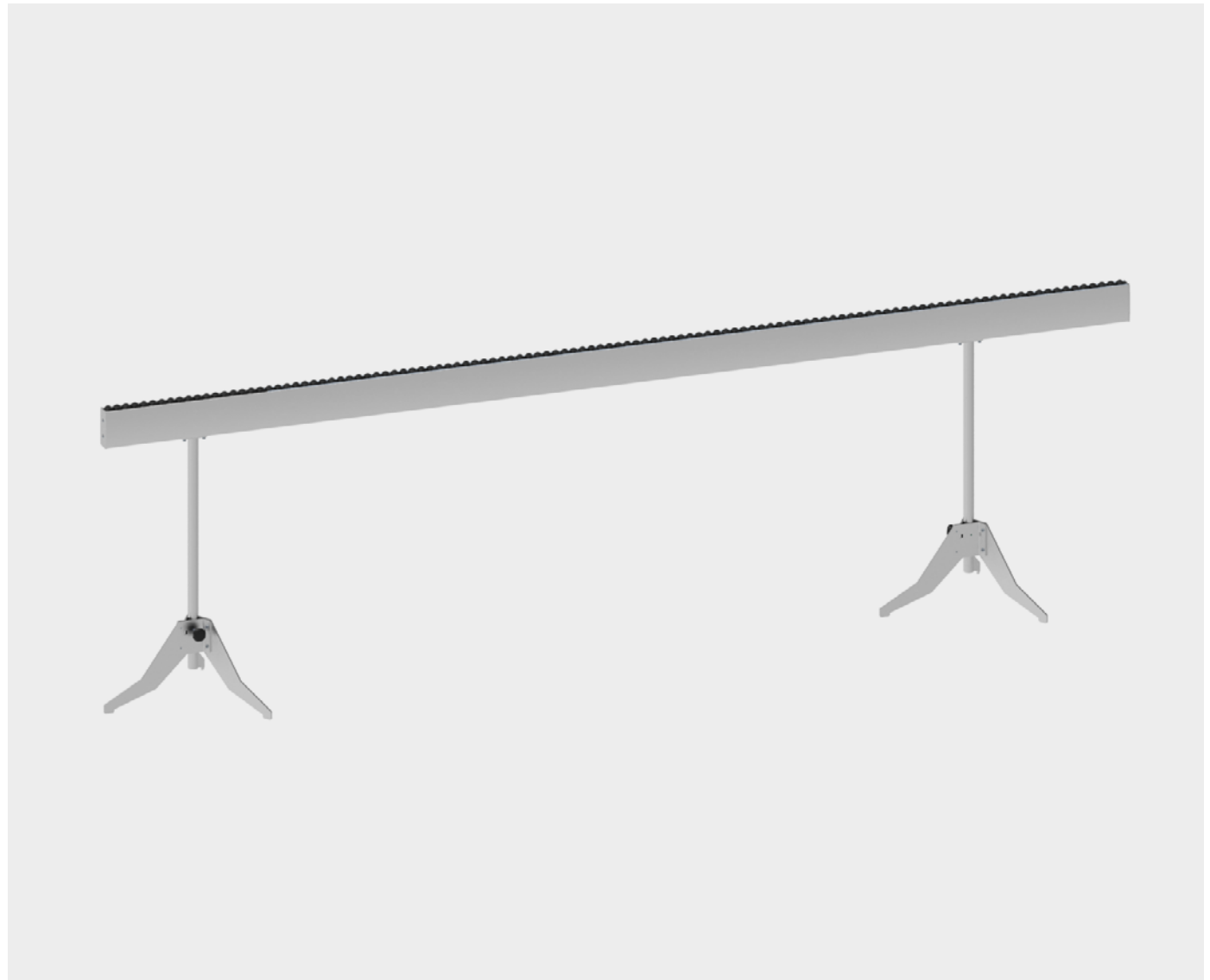
viaCondition

Optimizes machine
utilization

ADDITIONAL WORKPIECE EXTENSION ARM

With its stable design, the practical extension arm is particularly helpful for large and heavy workpieces. Body-friendly work not only relieves the operator, but also the machine's transport bridge. It can be positioned quickly and is adjustable in height.

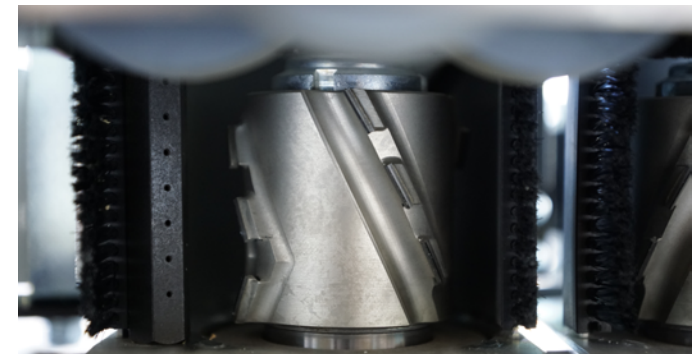
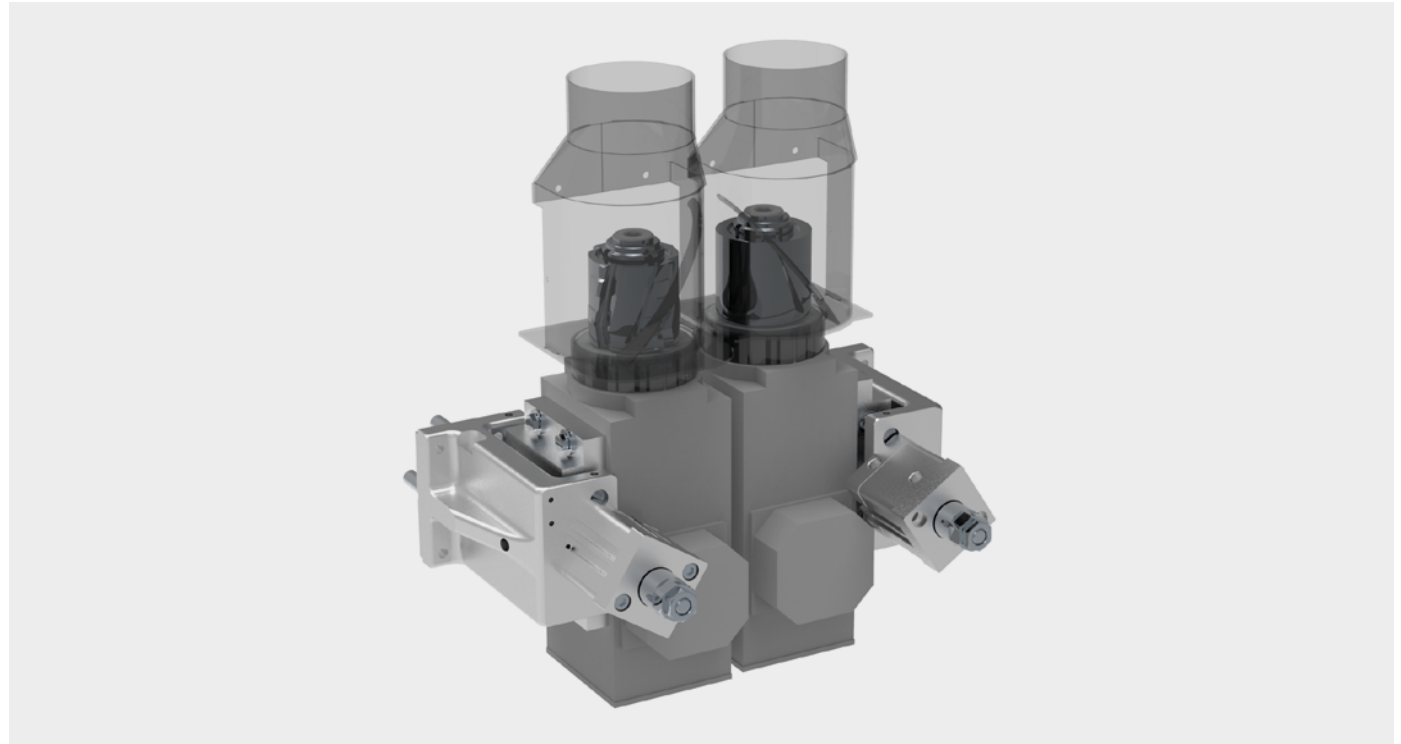
- Adaptable via height adjustment to the workpiece support of the machine
- For particularly long and large workpieces
- Support length 3080 mm



JOINTING UNIT FG101

The joint milling unit consists of two milling motors for climb milling and up-cut milling with diamond tipping. A clean and tear-free joining surface is created, this ensures a perfect transition between edge and workpiece and thus guarantees an optimum bonding surface. The joint thickness can be precisely adjusted on the infeed ruler.

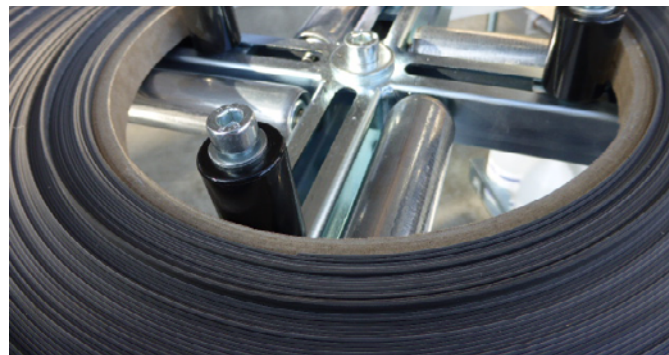
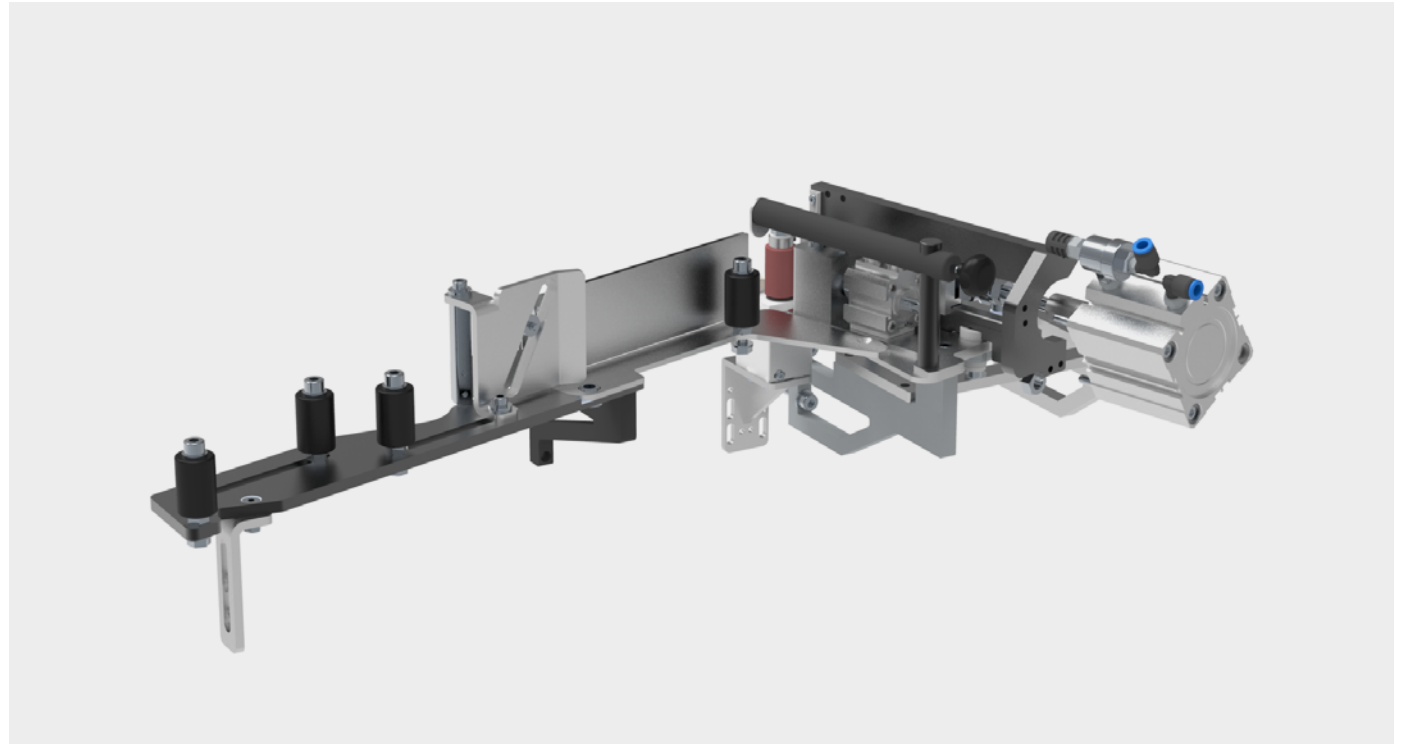
- 2 diamond milling heads \varnothing 60 mm H. 52 mm
1x in counter-rotation and
1x in synchronization
- Max. Workpiece thickness: 50 mm



EDGE FEED MG101

Fully automatic, user-friendly feeding of rolls and strips in single infeed. The changeover is made using the preselection keys on the control panel. The adjustable roll holder can easily accommodate edging material up to 800 mm in diameter.

- Roller magazine with automatic cross-cut shear
- Strip material with single feed (max. edge thickness 5 mm)
- Roll material up to 3 mm edge thickness
- Incl. roll holder Ø 800 mm



GLUE APPLICATION SYSTEM

The heart of the edgbanding machine

With the Glu Jet-Hybrid-Technology from HOLZ-HER, you can process EVA and PUR glue in one system as standard. Via the 3-fold heating system, consisting of ring heater, main heater and nozzle heater, the Glu Jet is ready for use within 3 minutes. Valuable production time is gained and energy costs are reduced as a result.

- **Zero joint with thin-film technology**

With the HOLZ-HER Glu Jet system, you can process PUR glue on a standard basis; just as simply as EVA glue

- **Fast and uncomplicated changeover**

From EVA to PUR and from cartridge to granule form

- **A clean machine**

The sealed system prevents the glue from burning, ensuring that it maintains its original colour and does not emit any adhesive vapor

- **Remaining glue quantity indicator**

The operator knows how many running meters can still be produced at all times

- **Sensor controlled automatic reloading**

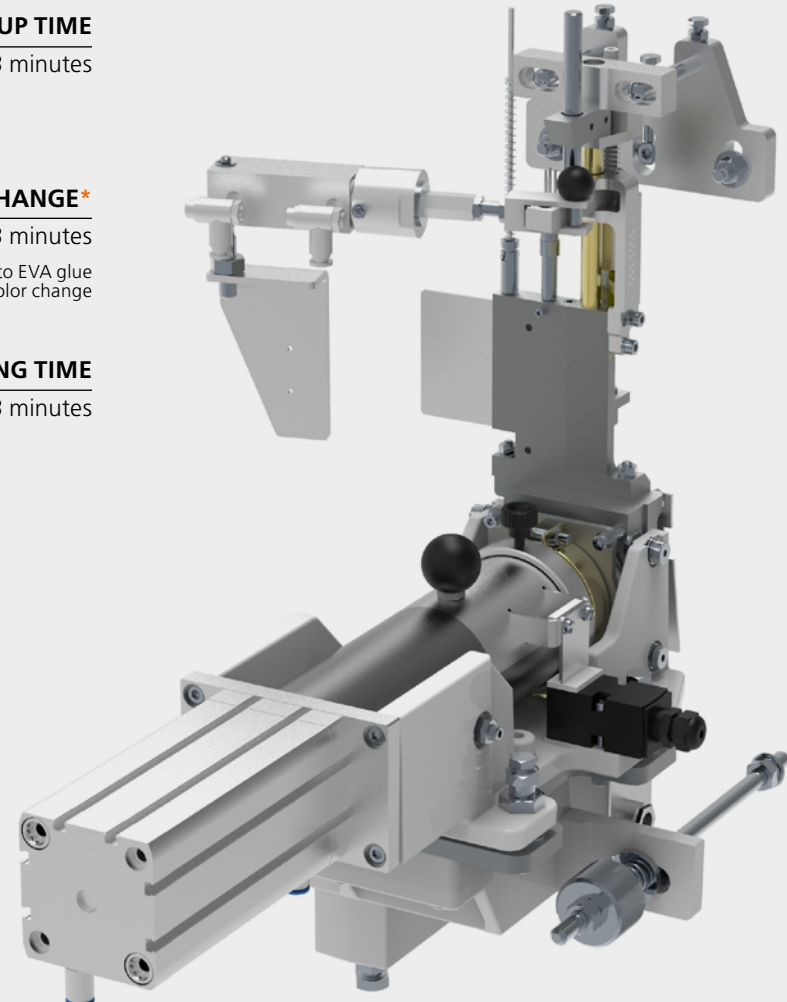
- **Just-in-time heat-up**


The complete gluing unit is fully ready for use in 3 minutes

- **100% adhesive strength**


By melting the adhesive as required

- **Low maintenance system**








HEAT-UP TIME
3 minutes



GLUECHANGE*
3 minutes
* to PUR glue, to EVA glue and color change



CLEANING TIME
3 minutes

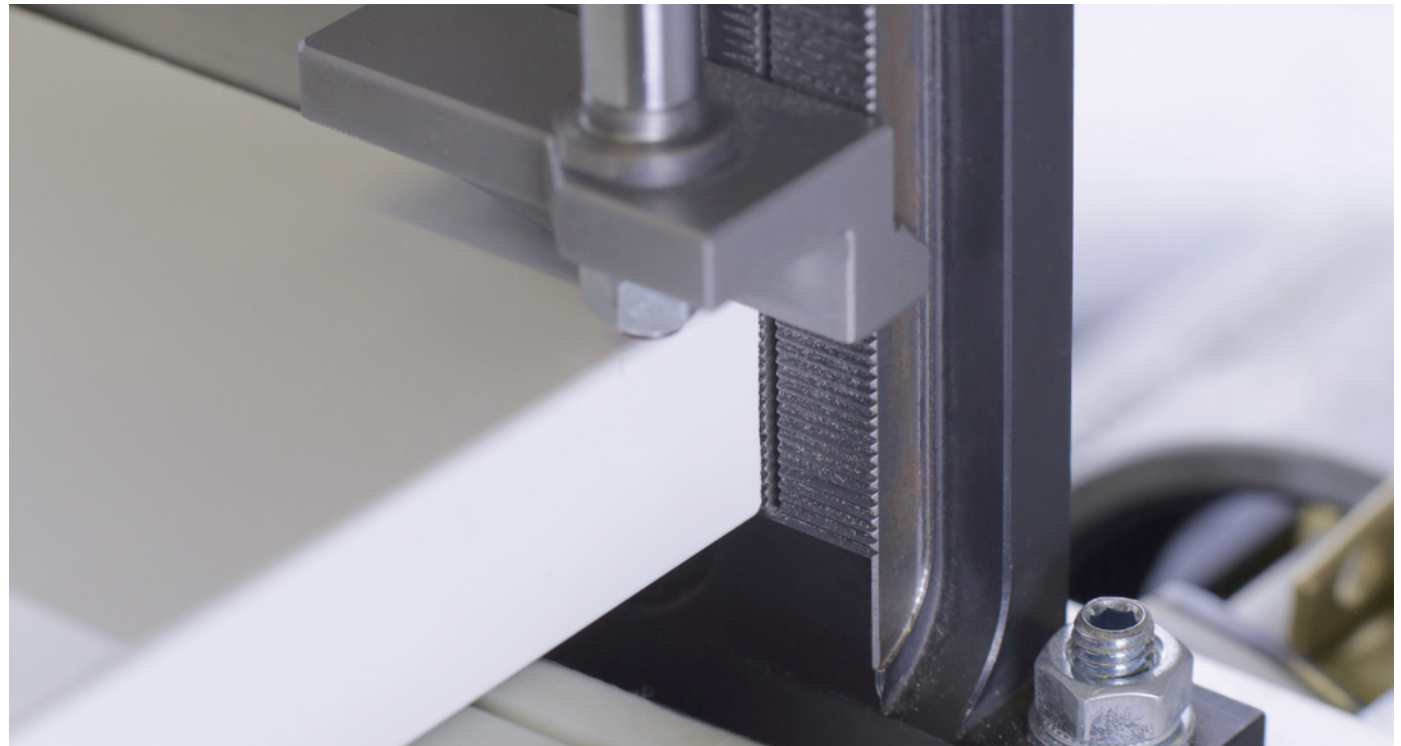



GLUE APPLICATION SYSTEM

Precision at the highest level

GluJet automatically adapts to all common panel thicknesses worldwide via the optimized nozzle segmentation. Tolerances in the panel thickness are compensated by the tracing nozzle. The sensing shoe is spring-loaded and opens the nozzle exactly to the sensed panel thickness. The GluJet thin film technology means the glue penetrates deep into the panel structure. You get a high strength joint and an invisible joint at the same time. Due to the 90° separation in 1 mm increments, the glue can spread evenly during edge pressing. For example, 19 glue lines are applied to a 19 mm panel, each forming a valley towards the outer edge of the panel. With this ingenious combination, the glue does not form above the joint.

- Zero joint with thin film technology
- Clean and clear nozzle application system in 1 mm increments, for uniform homogeneous glue application
- The amount of glue is exactly as required. This saves costs and increases quality
- Tracing nozzle for precise glue application

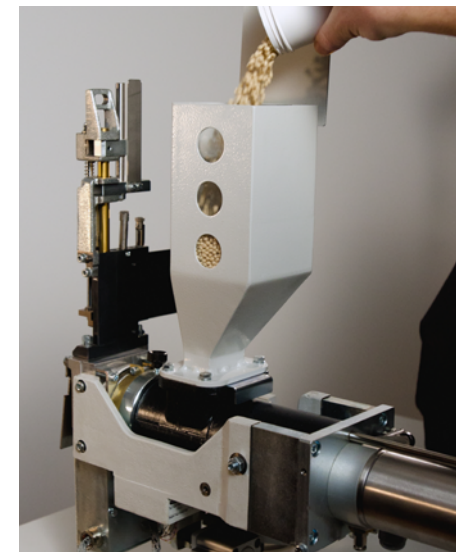
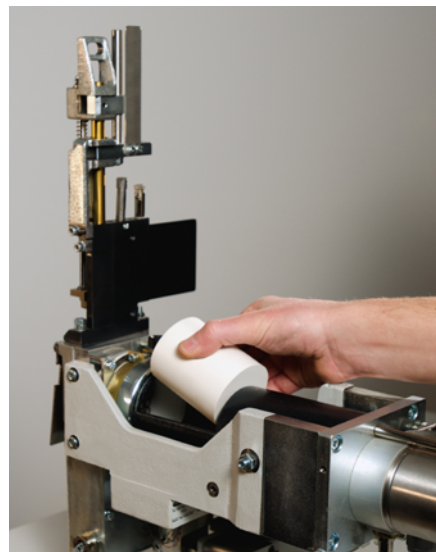


GLUE TYPES

The right type of glue for every decor

With the HOLZ-HER GluJet system, all common types of glue in cartridge as well as granule form can be easily processed in one system. Polyurethane glue gives you tremendous advantages due to its water-resistant properties, especially in the bathroom and kitchen furniture.

- **White EVA glue**
For your inexpensive bright decors
- **White PUR glue**
For your waterproof light furniture
- **Neutral EVA glue**
For your dark decors
- **Transparent PUR glue**
For your waterproof dark furniture

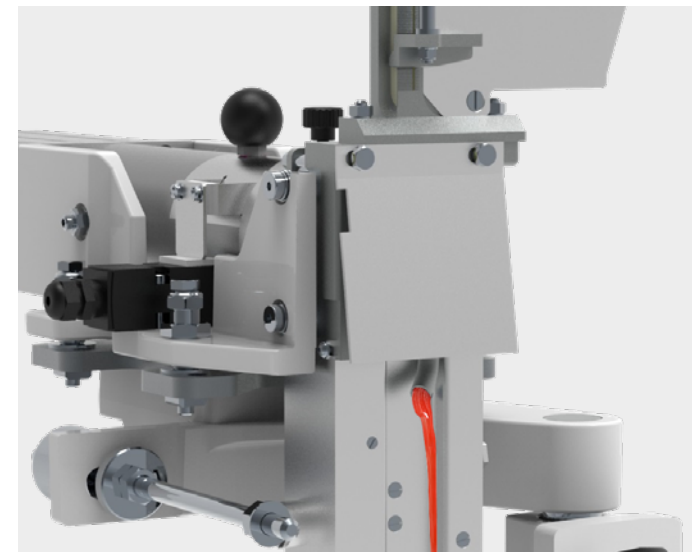


CLEANING

Simple, clean and uncomplicated

With the help of special cleaning cartridges or granules, the chemical process of the PUR is stopped by means of a neutralizer. For better identification, the cleaner is colored and can be easily distinguished from the glue. The rinsing process is performed by pressing a button on the touch display. Optionally, the entire cleaning process can be controlled with the use of iTronic, ensuring a high level of operating safety. The complete system is thoroughly and completely cleaned with the correct temperature as well as the appropriate pressure and optimized cycle. An integrated purge hole in the metering rod directs residual glue or cleaner into the collection container in a clearly visible manner and can then be conveniently disposed of. When using PUR glue, cleaning of the system is required after 48 hours. It is easy to conserve the system over periods of non use.

- In a few minutes the complete system is completely cleaned
- PUR adhesive always under control
- Guided process (with iTronic option)
- Fast and uncomplicated changeover from EVA to PUR and from cartridge to granule form





GLU JET CATCHER

The precise fit makes it easy to place the container under the GluJet. Particularly during the rinsing process, larger quantities of adhesive residue are produced. Thanks to the non-stick silicone insert, the container is emptied in a few seconds and ensures a permanently clean machine image.

- For collecting adhesive residues during the rinsing process
- The cleaning effort is reduced enormously
- Heat-resistant non-stick silicone insert included



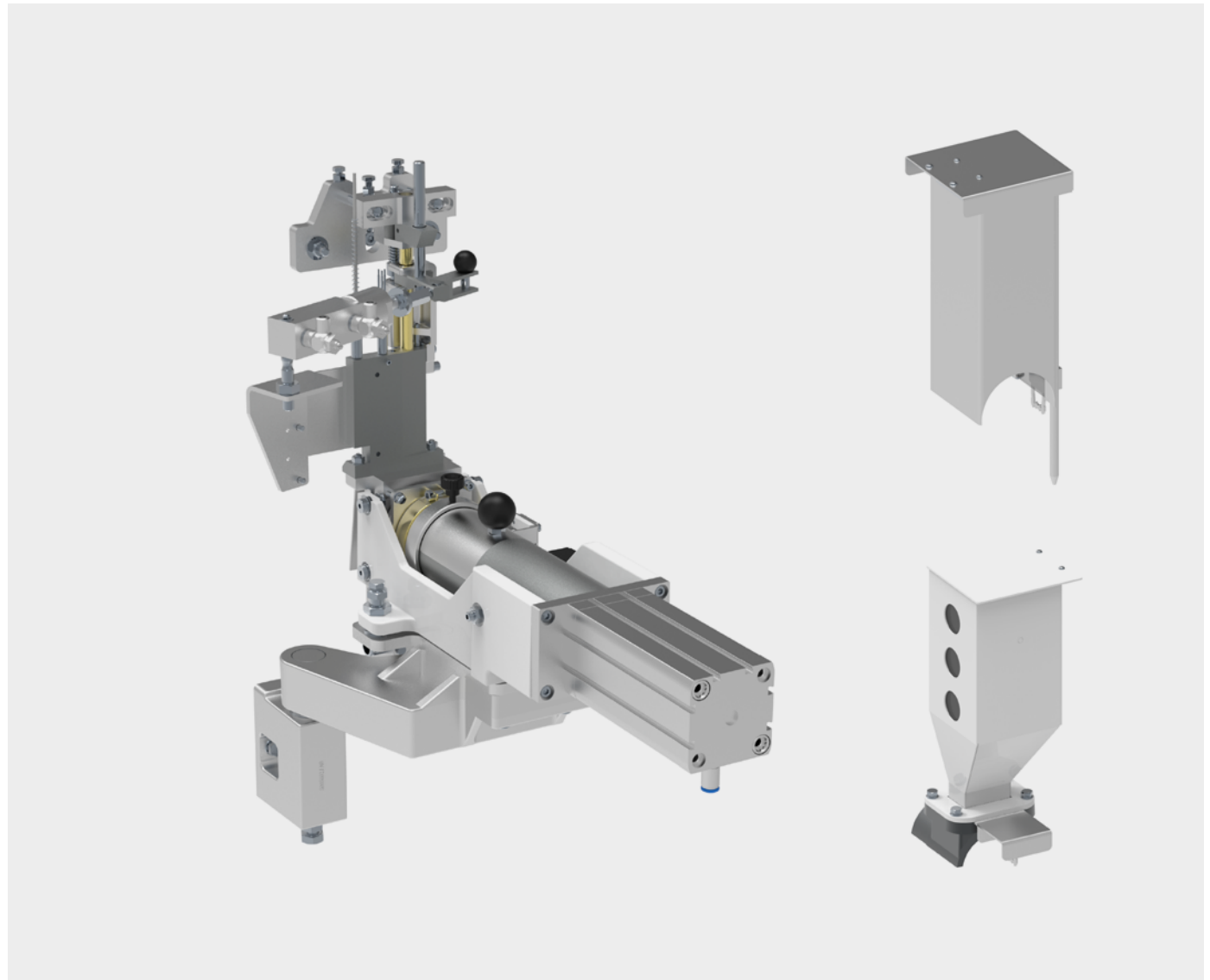
GLU JET GLUE APPLICATION SYSTEM GJ101

The Glue application system includes all the advantages of Glu Jet-Hybrid-Technology. For processing EVA and PUR glues in cartridges of approx. 0.3 kg or as granules.

- **Glu Jet-Hybrid-Technology**
All advantages of the HOLZ-HER Glu Jet system
- Reloading and rinsing at the touch of a button
- Automatic glue height adjustment via tactile nozzle
- Incl. Pressure regulator, for regulating the cartridge contact pressure
- Low maintenance

Available for the GluJet 101:

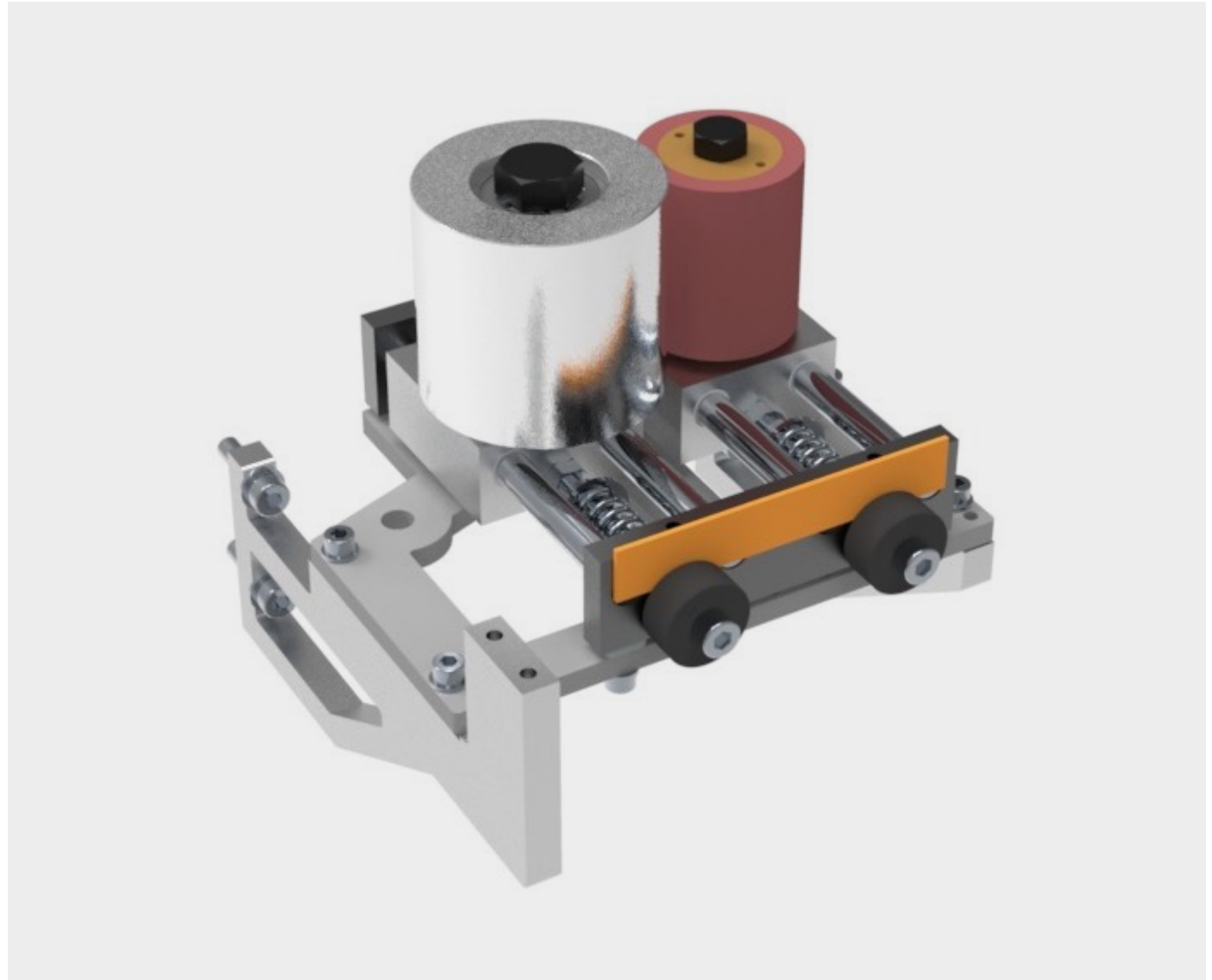
- Cartridge chamber for 4 cartridges (approx. 1.4 kg)
- Granulate chute for approx. 1.5 kg granulate for preloading larger quantities of adhesive



PRINCIPAL DW101

High quality 2-roll printing unit for a clean and strong pressing of the edge with the plate. Each pressure roller is mounted on a separate carriage, the contact pressure is generated by a spring. The contact pressure depth can be easily adjusted using spacers. For this purpose, sections of the used edges are ideally taken, this ensures a precise and fast adjustment and automatically compensates for the tolerances in the edge thicknesses.

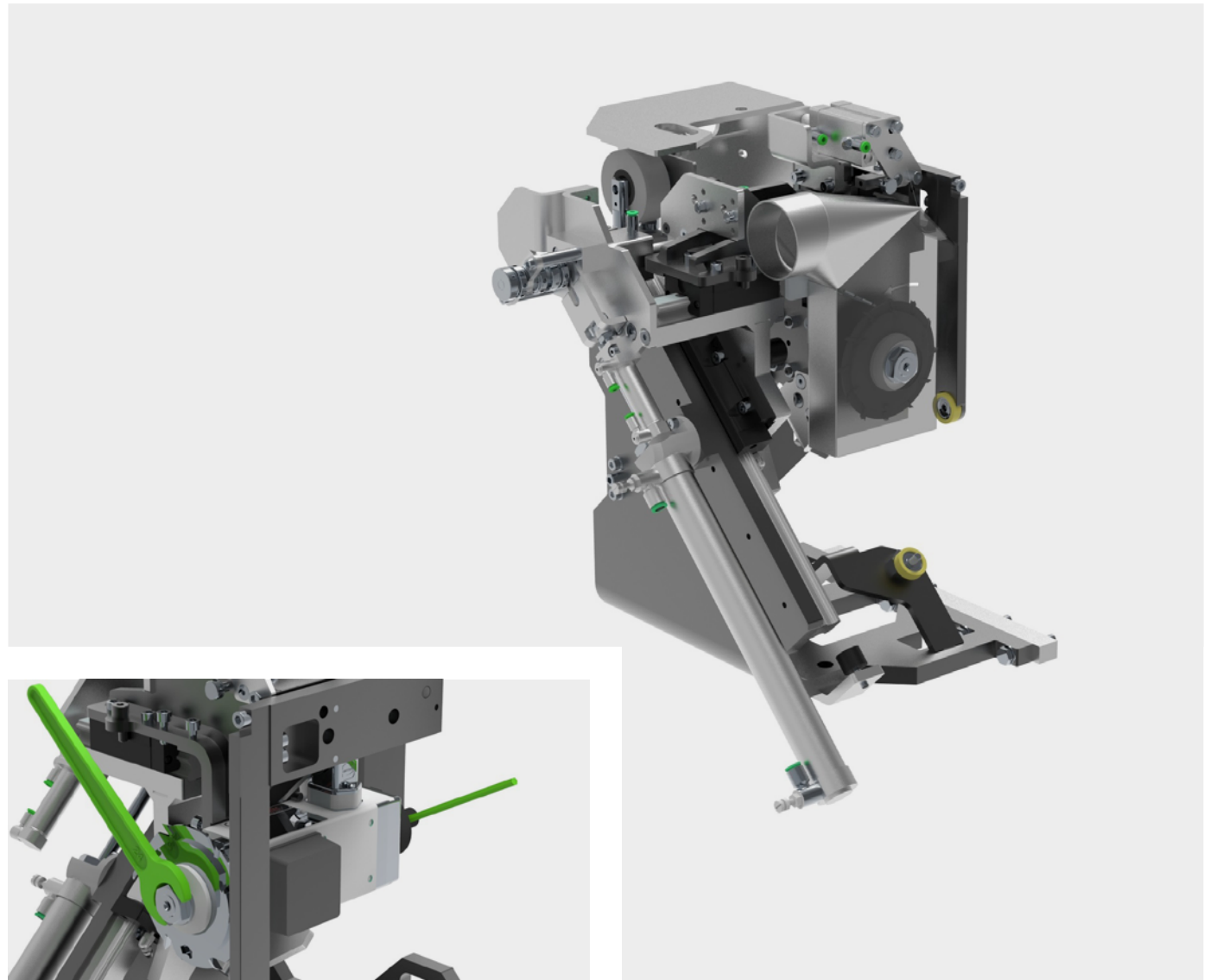
- 1. Roller made of surface-hardened aluminum for a strong contact pressure, Ø 80 mm
- 2. Roller has a rubber layer on the outside, this ensures a uniform holding pressure



CUTTING UNIT KA101

Heavy single-motor unit guided on a stable and low-maintenance linear guide. Edge protrusions are precisely trimmed. The carbide-tipped 50 mm saw blade can be easily changed into the machine.

- Stable construction on linear guide
- Low maintenance
- Incl. suction



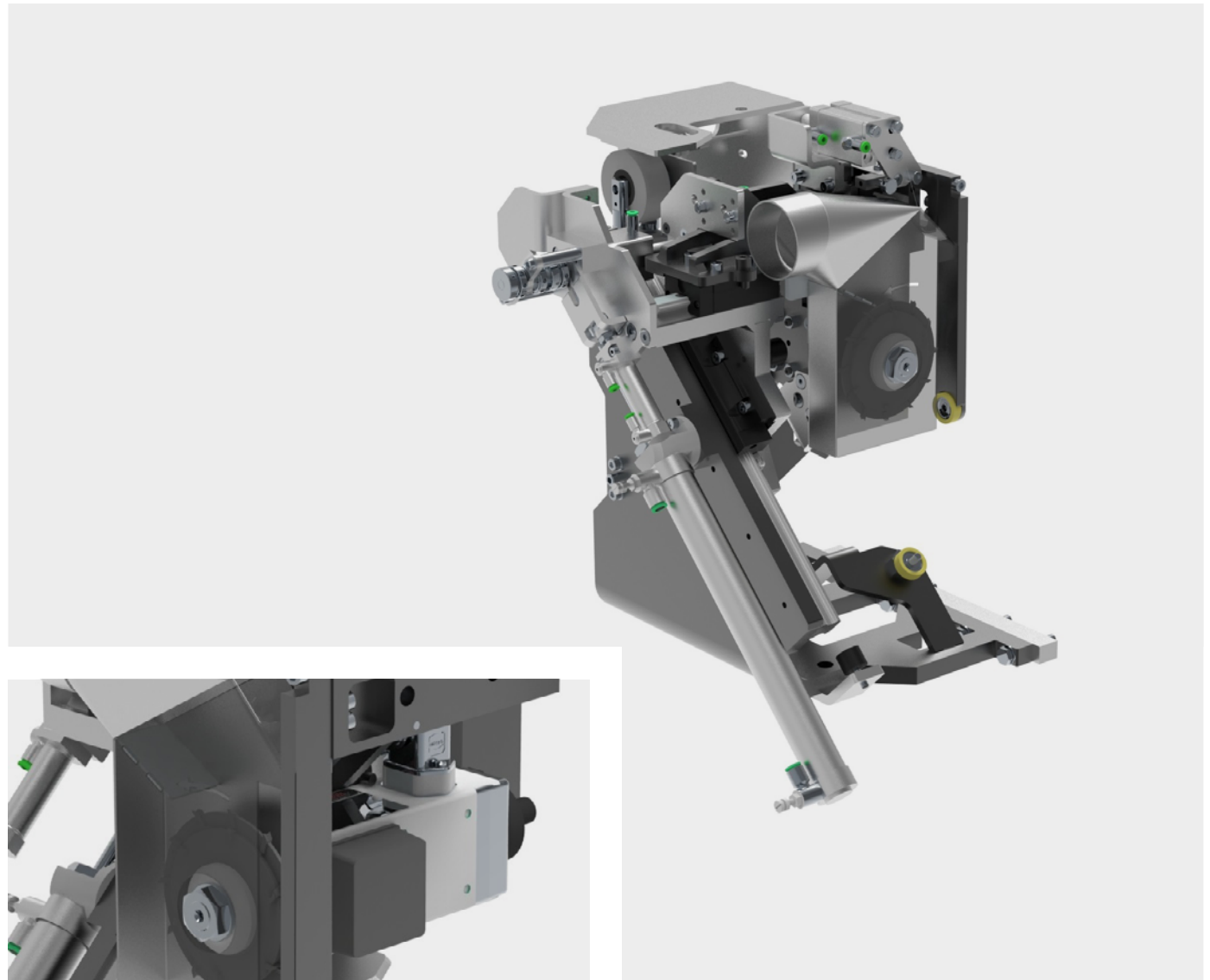
CUTTING UNIT KA101 PNEUMATIC

With the help of a special multifunction saw blade, a radius can be created on the workpiece edge with the pneumatic adjustment. Heavy single-motor unit guided on a stable and low-maintenance linear guide. Edge protrusions are precisely trimmed.

- Pneumatic immersion
- Sturdy construction with linear guides
- Low maintenance
- Incl. suction
- Radius caps

Available saw blades:

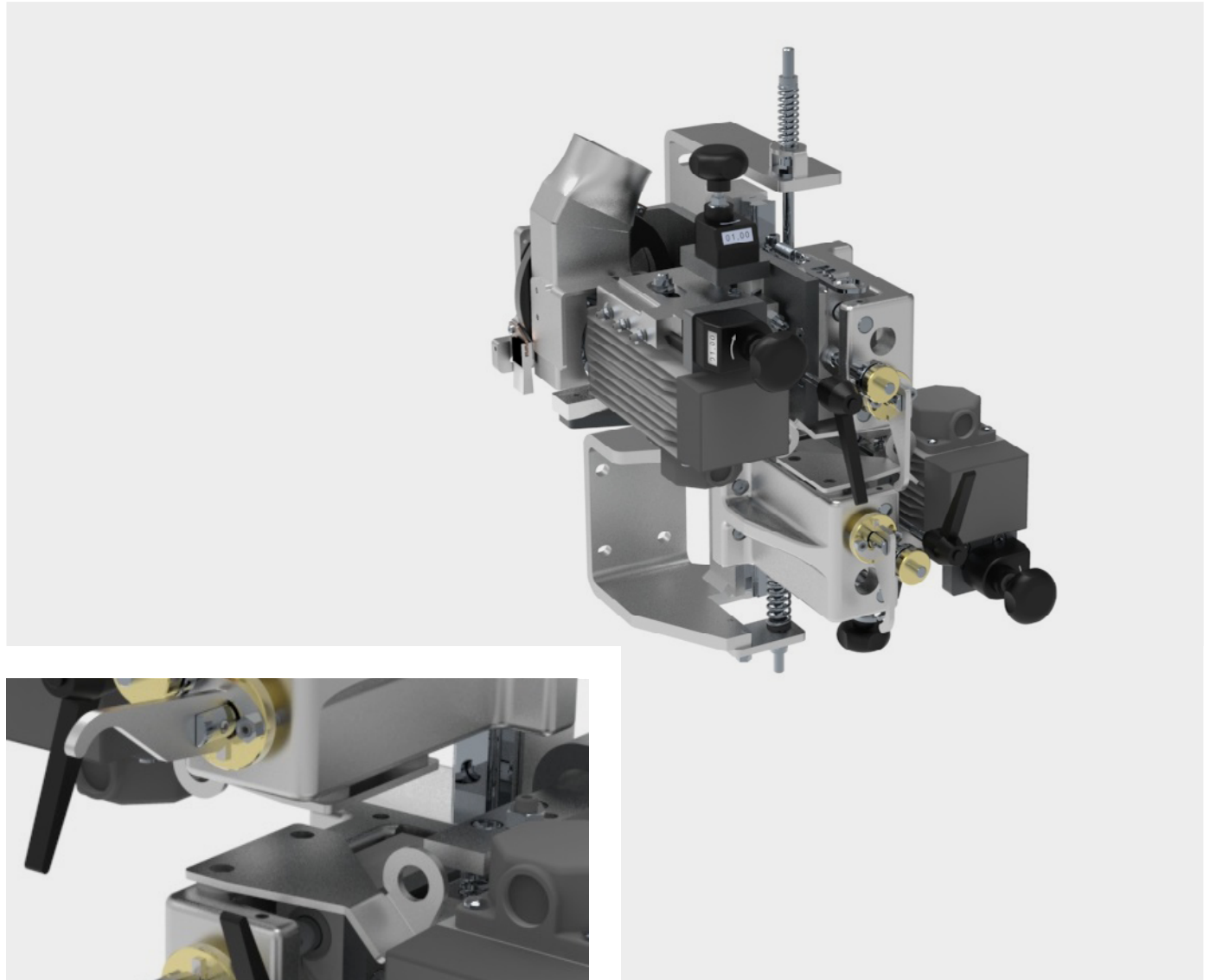
- Saw blade with R2 (in standard)
- Saw blade with R1
- Saw blade with R3



MILLING UNIT FR101

The two milling units can be fed separately from each other. This also allows the upper and lower workpiece edges to be machined differently. The multifunction milling unit can be switched between flush and radius milling depending on the setting. With the aid of VISE (VIsual-SEtting), the unit can be changed over reliably and with repeatable accuracy. The exact milling depth is achieved one-to-one by means of clamped spacers (edge sections), this ensures a precisely fitting milling depth to each edge.

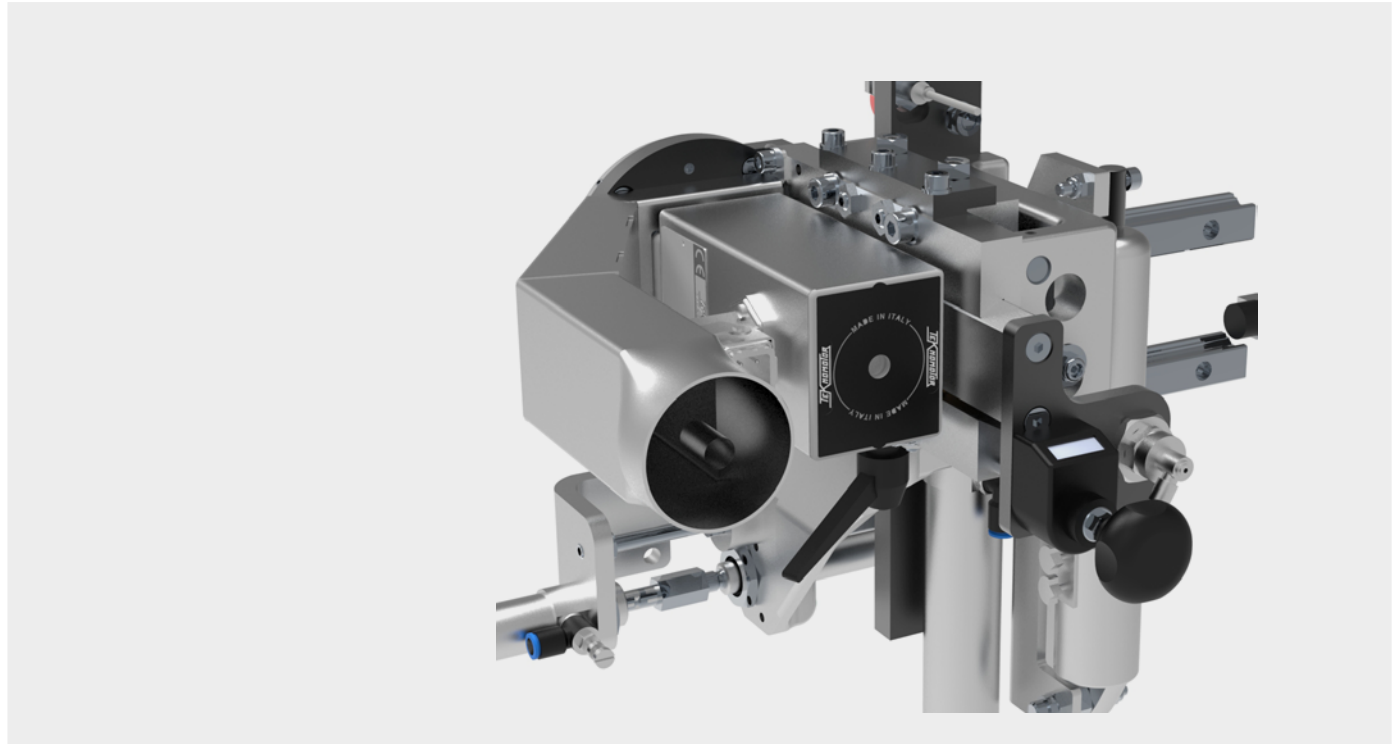
- For milling the upper and lower longitudinal edge
- Multifunction carbide insert milling cutter with radius 2 mm and flush
- User-friendly changeover with VISE



CORNER COPYING UNIT FF101

The stable corner copying unit is guided on two precise and low-maintenance linear guides. The diamond-tipped tool ensures long tool life and delivers the best results.

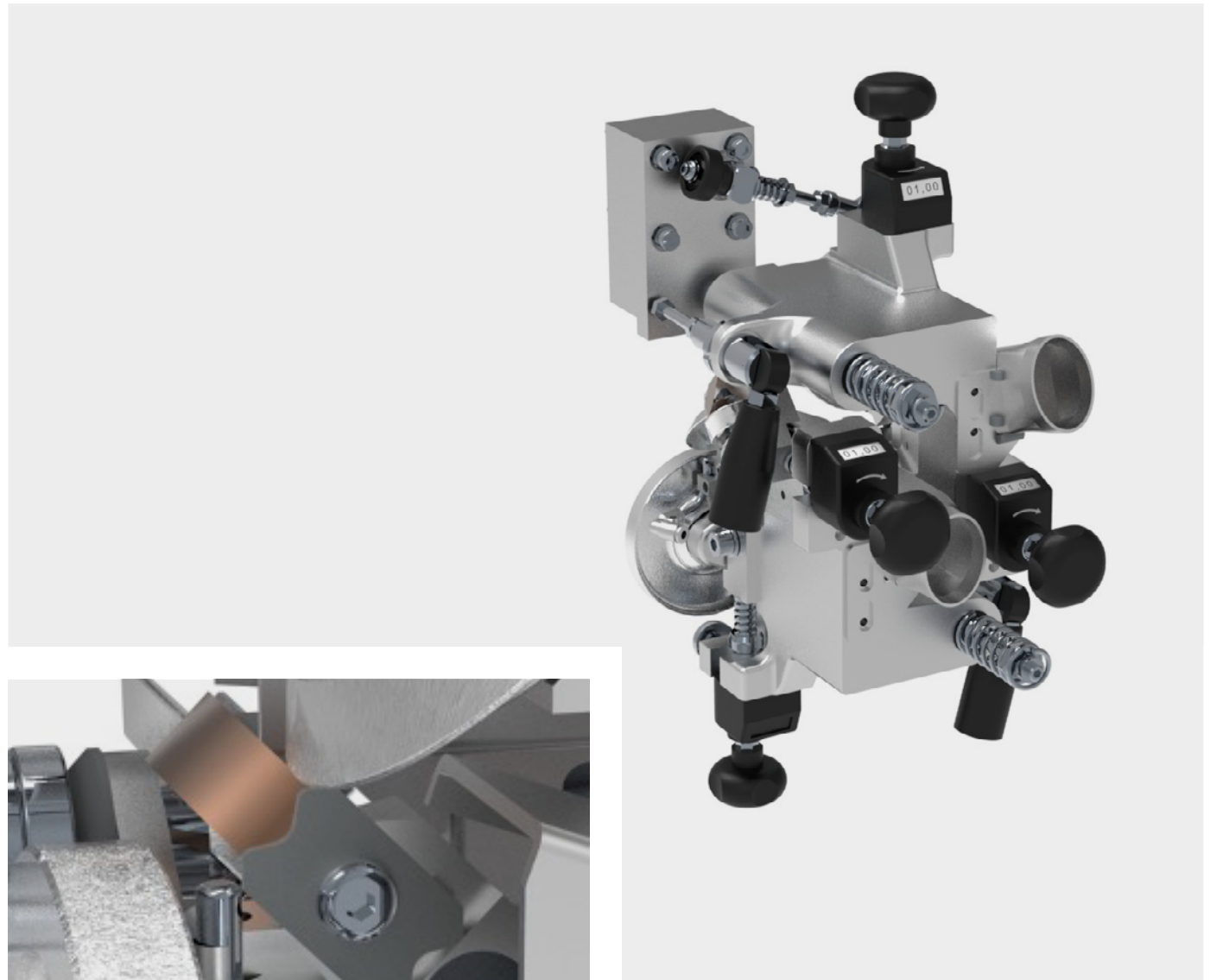
- Stable and extremely low-maintenance linear guides
- Diamond tipped tool Z4, radius 2 mm
- Max. Working height 45 mm
- Operator-friendly changeover
- Incl. suction



SCRAPER UNIT ZK101

For perfect smoothing of radiuses and chamfer-son plastic edging. With the help of VISE (VIsual-SEtting), the aggregate can be adjusted with repeatable accuracy and precision. On solid wood gluers, the profile scraper can be quickly and easily deactivated by means of a lever without having to adjust.

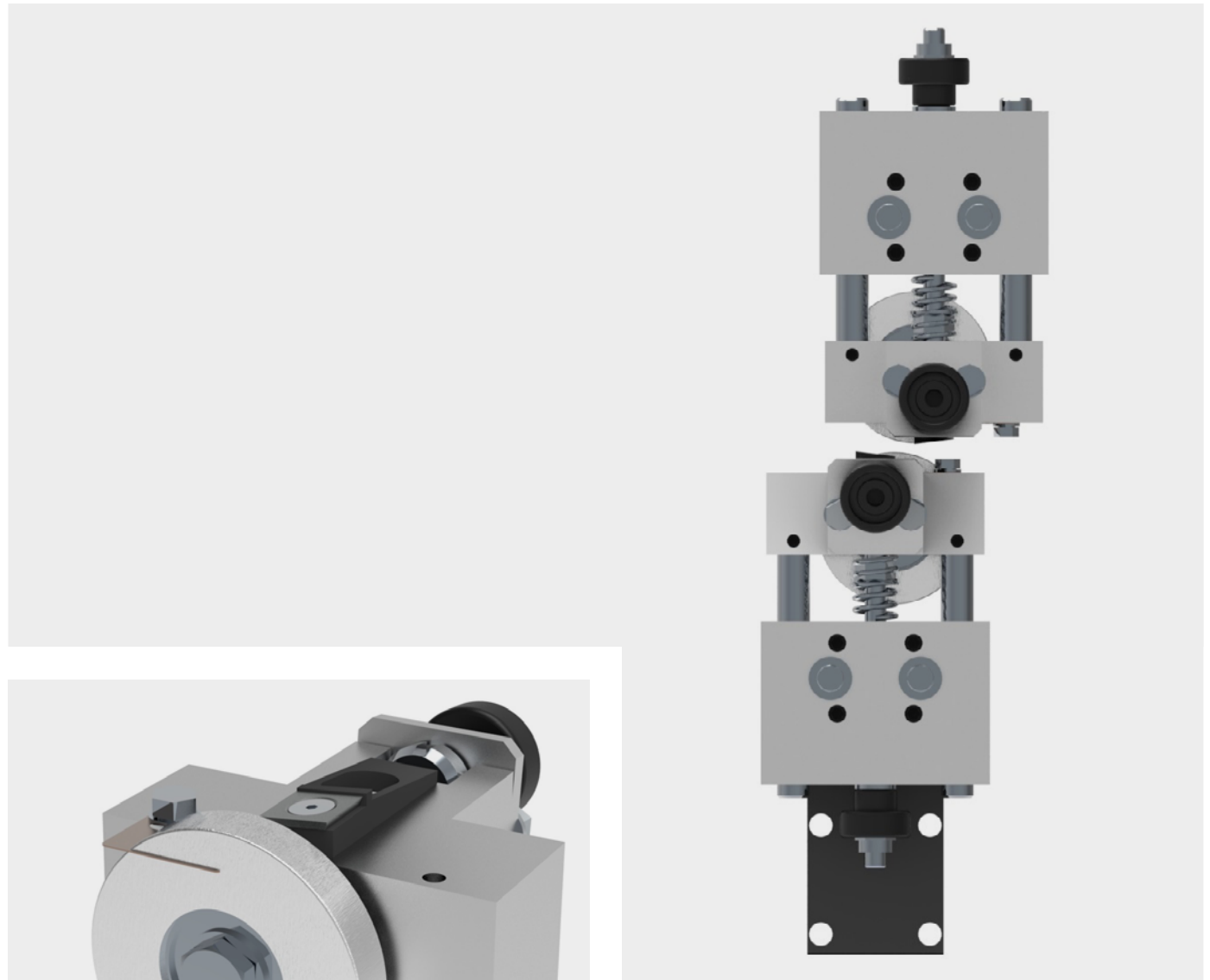
- Two digital counters for horizontal sensing rolls
- Scraper holder with carbide inserts, radius 2 mm
- Chip wiper on the sensing rollers
- Workpiece thickness min. 12 mm
- Operator-friendly changeover



SURFACE SCRAPER FK101

The last adhesive residues are removed without leaving any residue using the surface scraper. Four-sided carbide reversible knives ensure long tool life and consistent quality. For solid wood or veneer application, the aggregates can be put away manually. Manual post-processing is no longer necessary and saves you valuable production time.

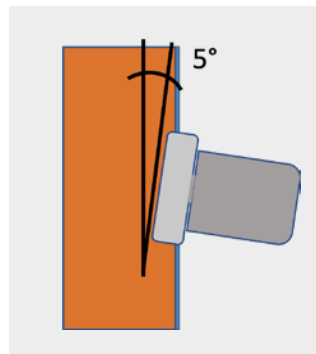
- Clean finishing of the surface
- Carbide reversible blade
- No need for manual postprocessing



BUFFING UNIT SW101

The buffing unit ensures a shiny and clean end result. Adjustable and swiveling textile buffing wheels ensure even polishing of the edge. In combination with the spraying device, the best results are achieved. Adhesive residues do not stand a chance.

- For finishing and polishing edges
- Textile discs Ø 120 mm
- Swivels 0 – 5°: For optimum utilization of the buffing surface



SPRAYING DEVICE

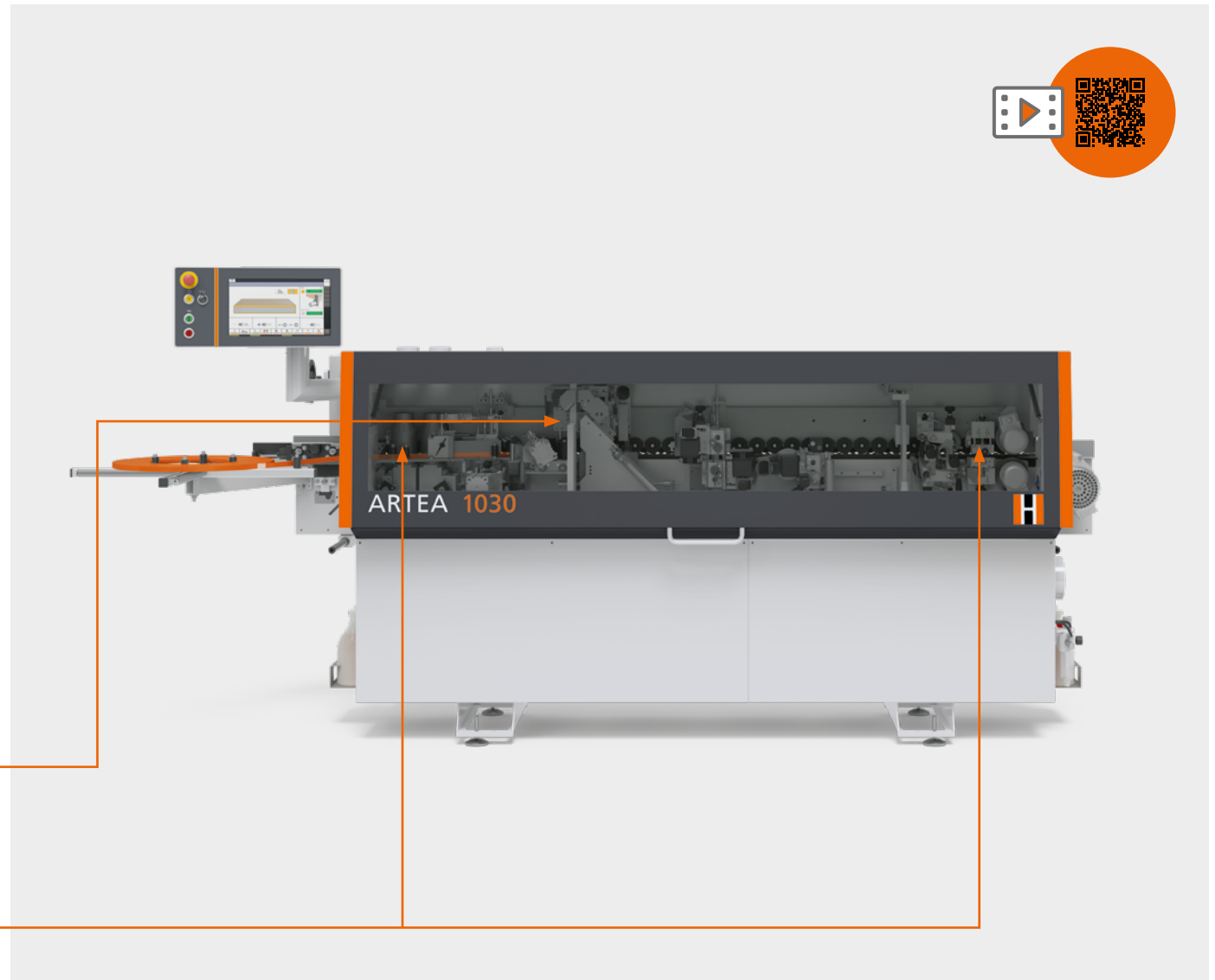
In the inlet area, a separating and cleaning agent is precisely applied via special spray nozzles. This prevents any glue or dirt residues from sticking. In combination with the buffing unit, the workpiece surface is optimally polished.

LUBRICANT GM101

After the printing unit for wetting the edge with lubricant, recommended for processing high-gloss edges

RELEASE AGENT TR101

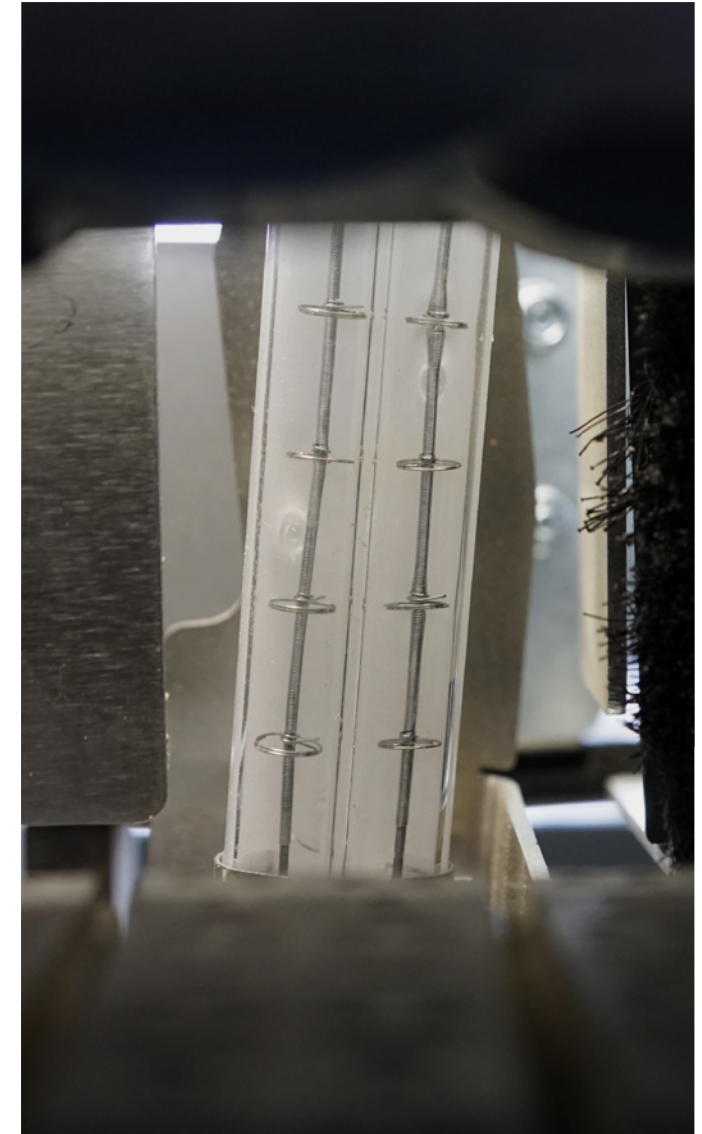
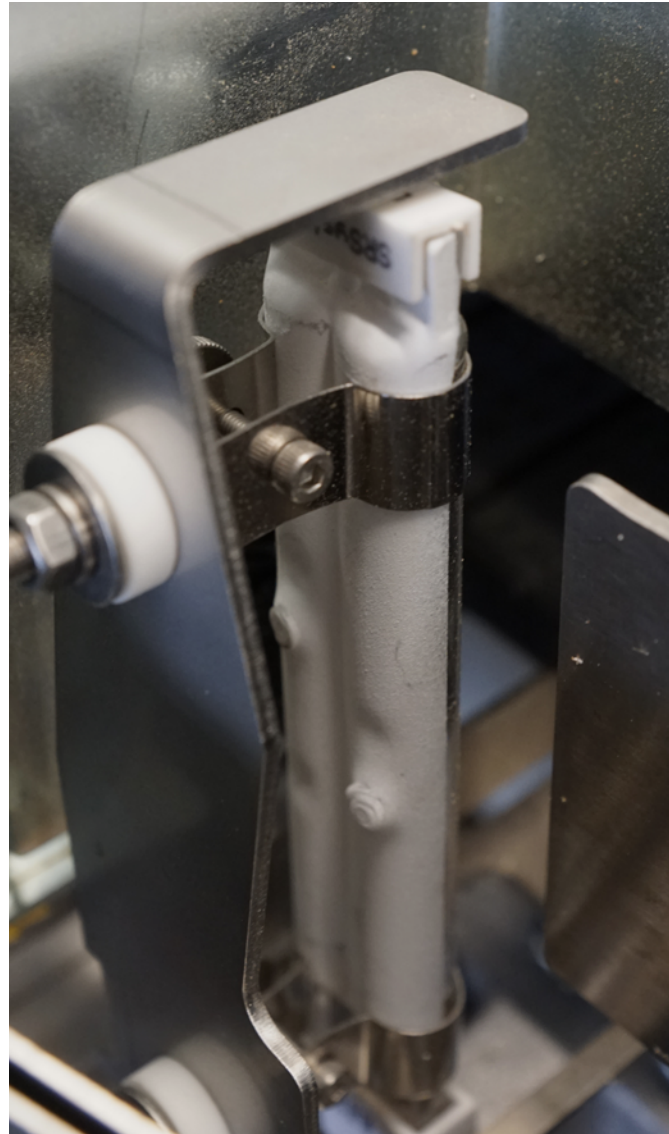
In the inlet and outlet area, prevents dirt and glue from sticking to the plate

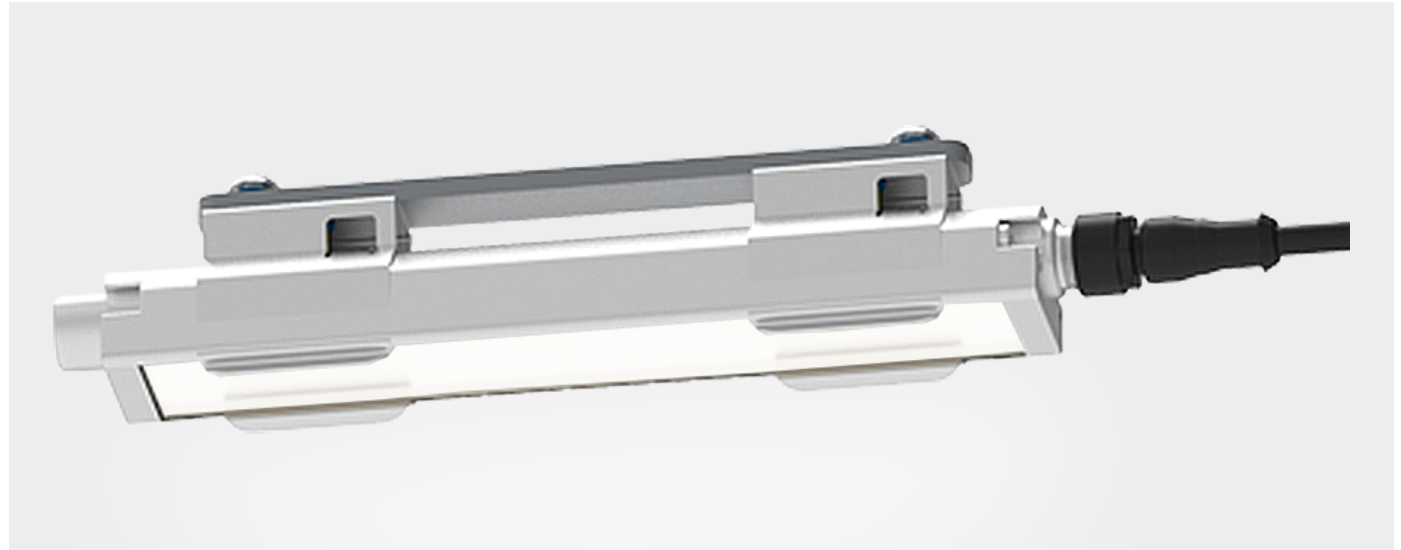


INFRARED HEATER ZH101

The IR heater heats the front edges of the workpieces before the adhesive is applied. Temperature and glue strength are always related. The panel temperature should not be below 15°C for edging. Especially in the case of solid wood edge banding, the heating of the workpiece edge can play a decisive role.

- Heats panel edge additionally before adhesive application
- Better adhesion
- Also useful in cool workshops





LED MACHINE LIGHTING

With the practical LED lighting at the top of the machine housing, you can keep an excellent eye on your aggregates. The all-round, continuous lighting means that work can always be carried out safely and clearly, even in darker work areas. A plus in terms of occupational safety.

