

HOLZ-HER SPRINT series

Superior edgebanding expertise

SPRINT 1327 POWER



Repeatable set up
at the push of a button

SPRINT 1327 MULTI



Highly efficient
multifunction milling technology

SPRINT 1327 DOORS

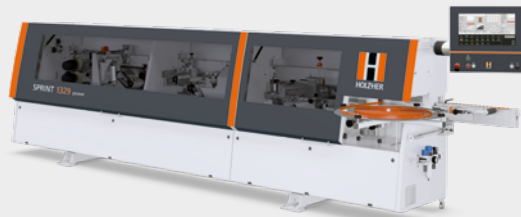


Equipped for
solid wood edge material

HOLZ-HER SPRINT series

Superior edgebanding expertise

SPRINT 1329 POWER



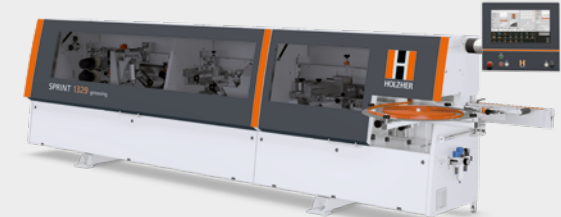
Setup in the gap
using high-speed servo axes

SPRINT 1329 MULTI



High-end units with revolving tool
changer technology

SPRINT 1329 GROOVING



Your SPRINT
with grooving unit

SPRINT 1327 POWER



- 1 fa.s.t. Setting Technology
- 2 SYNCHRO edging feed
- 3 Glu Jet-Hybrid-Technology
- 4 Automatic pressure unit
- 5 Cutter Unit MOT6
- 6 Scraper unit MOT4 incl. high-gloss package

SPRINT 1327 MULTI



- 1 fa.s.t. Setting Technology
- 2 SYNCHRO edging feed
- 3 Glu Jet-Hybrid-Technology
- 4 Automatic pressure unit
- 5 Cutter Unit MOT6 multi
- 6 Fully automatic scraper unit MOT6

SPRINT 1327 DOORS



- 1 fa.s.t. Setting Technology
- 2 SYNCHRO edging feed
- 3 Solid wood end trimming unit
- 4 Flush Trimming Unit
- 5 2nd Flush milling Unit
- 6 Fine Trimming Unit MOT6

SPRINT 1329 POWER



- 1 fa.s.t. Setting Technology
- 2 SYNCHRO edging feed
- 3 Glu Jet-Hybrid-Technology
- 4 Cutter Unit MOT6
- 5 Fully digital two motor corner rounding unit MOT4
- 6 Scraper unit MOT4 incl. high-gloss package

SPRINT 1329 MULTI



- 1 fa.s.t. Setting Technology
- 2 SYNCHRO edging feed
- 3 Glu Jet-Hybrid-Technology
- 4 Automatic multi-stage tool MOT6
- 5 Corner rounding unit with multi revolving tool
- 6 Scraper unit MOT6 multi

SPRINT 1329 GROOVING



- 1 fa.s.t. Setting Technology
- 2 SYNCHRO edging feed
- 3 Glu Jet-Hybrid-Technology
- 4 Cutter Unit 301 MOT6
- 5 Scraper unit MOT4 incl. high-gloss package
- 6 Grooving unit

BASIC MACHINE

Units for 100 percent repeatability

With the SPRINT series, you get edge banding technology at the highest level. Motorized positioning axes are used for the complete machine. With the help of multi-stage tools, different radii or applications with 45° chamfer can be accomplished at the push of a button. Thanks to the high-speed servo axes, various applications can be managed simultaneously. "Equipping in the gap"

- Feed speed: 10 – 18 m/min
- Edge height max.: 65 mm
- Workpiece thickness: 8 – 60 mm
- Workpiece width: min. 60 mm
- Workpiece length: min. 160 mm
- Stable pressure bridge with double row rubberized pressure rollers
- Fully automatic operation of the processing units via NC servo axes
- Motorized height adjustment of the pressure bridge
- Integrated, easily accessible control cabinet
- Extendable workpiece support
- Extensive program memory
- Pneumatic locking roller for shortest workpiece distance
- Workpiece detection by means of light barrier
- Large, space-saving and sound-insulated safety hood
- Powerful drive motor for smooth and precise, transport of the workpieces



TECHNICAL DATA

At a glance

	SPRINT 1327 POWER
Control	21.5" touch screen
Bridge	Motorized roller bridge
Magazine	SYNCHRO
Pre-milling	Material thickness up to 60 mm
Glue application	Glu Jet automatic
Pressure unit	3 rollers, motorized
Trimming	Twin-motor
Cutter	Cutter unit 301 MOT6
Corner rounding	Single motor, 60 mm MOT1
Radius scraper	MOT4 incl. high gloss package
Surface scraper	Application controlled surface scraper
	Pre and post tracing
Buffing	Buffing unit
Feeding	Air cushion table & RETURNMASTER 5920
Spraying device	Release agents, cleaning agents and lubricants



The technical data are guide values. We reserve all rights to changes in design and equipment, because HOLZ-HER machines are subject to continuous development. Illustrations not binding. Some of the machines shown also contain special equipment not included as a standard feature. For clarity, some of the machines are shown without protective hood.

Standard
 Optional

TECHNICAL DATA

At a glance

	SPRINT 1327 MULTI
Control	21.5" touch screen
Bridge	Motorized roller bridge
Magazine	SYNCHRO
Pre-milling	Material thickness up to 60 mm
Glue application	Glu Jet automatic
Pressure unit	3 rollers, motorized
Trimming	Twin-motor
Cutter	Cutter unit 502 MOT6 multi
Corner rounding	Single motor, 60 mm MOT1
Radius scraper	Multi scraper blade MOT6
Surface scraper	Application controlled surface scraper
	Pre and post tracing
Buffing	Buffing unit
Feeding	Air cushion table & RETURNMASTER 5920
Spraying device	Release agents, cleaning agents and lubricants

Standard

Optional



The technical data are guide values. We reserve all rights to changes in design and equipment, because HOLZHER machines are subject to continuous development. Illustrations not binding. Some of the machines shown also contain special equipment not included as a standard feature. For clarity, some of the machines are shown without protective hood.

TECHNICAL DATA

At a glance

	SPRINT 1327 DOORS	
Control	21.5" touch screen	
Bridge	Motorized roller bridge	
Magazine	SYNCHRO	
Pre-milling	Material thickness up to 60 mm	
Glue application	Glu Jet automatic	
Pressure unit	3 rollers, motorized	
Trimming	Two-motor 15 mm solid wood	
Cutter 1	Flush 15mm MAN	Flush 15mm MOT
Cutter 2	Flush 15mm MAN	Flush 15mm MOT
Cutter 3		Cutter unit 301 MOT6
Surface scraper	X	
Buffing	X	
Feeding	Air cushion table & RETURNMASTER 5920	



The technical data are guide values. We reserve all rights to changes in design and equipment, because HOLZ-HER machines are subject to continuous development. Illustrations not binding. Some of the machines shown also contain special equipment not included as a standard feature. For clarity, some of the machines are shown without protective hood.

Standard
 Optional
 X Not possible

TECHNICAL DATA

At a glance

	SPRINT 1329 POWER
Control	21.5" touch screen
Bridge	Motorized roller bridge
Magazine	SYNCHRO
Pre-milling	Material thickness up to 60 mm
Glue application	Glu Jet automatic
Pressure unit	3 rollers, motorized
Trimming	Twin-motor
Cutter	Cutter unit 301 MOT6
	Cutter unit 701 MOT6
Corner rounding	Two-motor, 60 mm MOT4
Radius scraper	MOT4 incl. high gloss package
Surface scraper	Application controlled surface scraper
	Pre and post tracing
Buffing	Buffing unit
Feeding	Air cushion table & RETURNMASTER 5920
Spraying device	Release agents, cleaning agents and lubricants



The technical data are guide values. We reserve all rights to changes in design and equipment, because HOLZHER machines are subject to continuous development. Illustrations not binding. Some of the machines shown also contain special equipment not included as a standard feature. For clarity, some of the machines are shown without protective hood.

Standard
 Optional

TECHNICAL DATA

At a glance

	SPRINT 1329 MULTI
Control	21.5" touch screen
Bridge	Motorized roller bridge
Magazine	SYNCHRO
Pre-milling	Material thickness up to 60 mm
Glue application	Glu Jet automatic
Pressure unit	3 rollers, motorized
Trimming	Twin-motor
Cutter	Cutter unit 701 MOT6 multi
Corner rounding	Twin-motor, 60 mm MOT6 multi
Radius scraper	MOT6 multi
Surface scraper	Application controlled surface scraper
	Pre and post tracing
Buffing	Buffing unit
Feeding	Air cushion table & RETURNMASTER 5920
Spraying device	Release agents, cleaning agents and lubricants

Standard

Optional



The technical data are guide values. We reserve all rights to changes in design and equipment, because HOLZHER machines are subject to continuous development. Illustrations not binding. Some of the machines shown also contain special equipment not included as a standard feature. For clarity, some of the machines are shown without protective hood.

TECHNICAL DATA

At a glance

	SPRINT 1329 GROOVING
Control	21.5" touch screen
Bridge	Motorized roller bridge
Magazine	SYNCHRO
Pre-milling	Material thickness up to 60 mm
Glue application	Glu Jet automatic
Pressure unit	3 rollers, motorized
Trimming	Twin-motor
Cutter	Cutter unit 301 MOT6
	Cutter unit 701 MOT6
Corner rounding	Two-motor, 60 mm MOT1
Radius scraper	MOT4 incl. high gloss package
Surface scraper	Application controlled surface scraper
	Pre and post tracing
Buffing	Buffing unit
Feeding	Air cushion table & RETURNMASTER 5920
Spraying device	Release agents, cleaning agents and lubricants
Grooving unit	MOT2

Standard

Optional



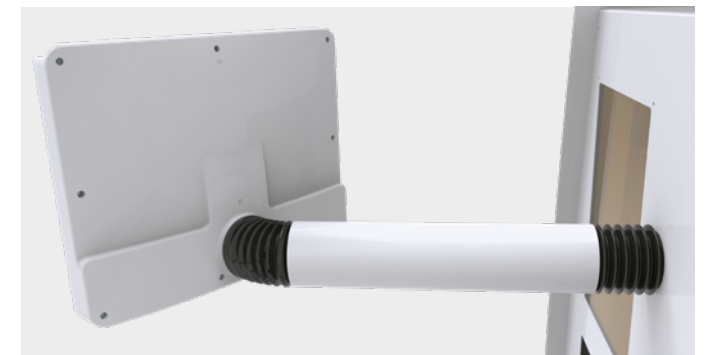
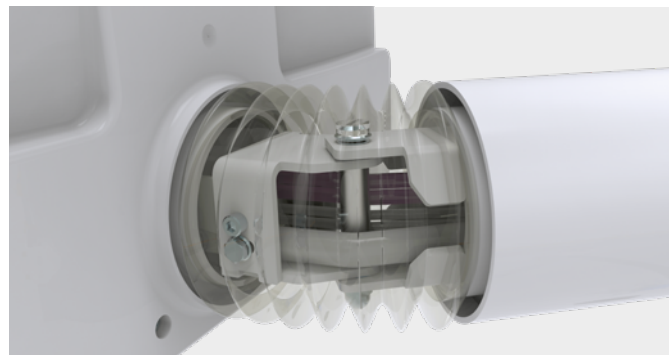
The technical data are guide values. We reserve all rights to changes in design and equipment, because HOLZ-HER machines are subject to continuous development. Illustrations not binding. Some of the machines shown also contain special equipment not included as a standard feature. For clarity, some of the machines are shown without protective hood.

EDGE CONTROL TOUCH

Extremely simple operation for efficient setup of the machine

Fully automatic operation of the processing units on an ergonomic 21.5" touch display. With Edge Control you keep an overview of all parameters.

- 21.5" HD touch screen
- Graphical user interface
- Rotating and swiveling control panel at eye level
- Simple program call
- Extensive program memory
- Individual selection of the units
- Industrial PC with LINUX OS



FA.S.T. SETTING-TECHNOLOGY

All capacities are fully utilized

FAST-SETTING-TECHNOLOGY

- Efficient edgebanding by "setting up in the gap"
- Various machining operations can be run simultaneously
- No more waiting to run the machine empty



INTELLISET

Graphic setup aid – without test workpieces

You can see graphically at any time which corrections are made in each direction. The values entered at the control are converted to the actual axis values fully automatically in the background. This makes sample workpieces a thing of the past.

- Easy visual recognition of correction settings through intelligent graphics
- Easy adjustment of the axes in the 0.01 mm range
- Ideal for material with protective film
- Compensation of edge tolerances
- Sample workpieces are not needed



ITRONIC

Your intelligent edge assistant!

At the push of a button, the gluing station is spotlessly clean. Always know what's left with the residual adhesive quantity monitor. Whether thin edge or thick veneer edge – always the right power at the guillotine. Solid wood or thin edge – the pressure combination at the pressure unit is always correct.

- Adaptive crosscut knife
- Automatic glue quantity control
- Automatic flushing and cleaning cycle
- Automatic pressure unit
- Residual adhesive quantity monitoring




**iTronic
inside**

ADAPTIVE CROSS-CUT KNIFE. AT THE PUSH OF A BUTTON,
THE GLUING STATION IS SPOTLESSLY CLEAN.

74 m

iTronic

The advertisement features a large image of a Holzher iTronic machine with a control panel. Above the machine are three icons: a crosscut knife, a glue quantity monitor, and a pressure unit. To the right, two diagrams illustrate the cleaning cycle and the 74m residual adhesive quantity monitor. The Holzher logo is visible on the machine's side panel.

ECO MODE

The intelligent energy management for HOLZ-HER edgebanders

This energy saving mode is an automatic standby circuit that puts all drives out of operation as soon as no workpiece is fed into the machine. The motors comply with the new energy efficiency class IE 3. If no workpiece is entered for a longer period of time (6 minutes), the heating of the glue station is also switched off automatically. The machine then no longer consumes energy.



BARCODE SCANNER

Smart Factory

HOLZ-HER's compact labels contain all the information the operator needs. The appropriate edging program can be called up via the applied DataMatrix code. The machine automatically sets up all units and pressure gauges (with adaptive pressure and adhesive quantity control).

- Standard scannable barcodes:
 - Code 39
 - Code EAN 128
- Scannable 2D codes:
 - DataMatrix
 - PDF417
- Networking with industry software
- Calling up the edge programs by barcode
- Individual QR codes for each edge
- Fully automatic setup of the machine



VIACOCKPIT – HOLZ-HER MACHINE MONITORING

Full transparency for your
future workshop

Productivity shown transparently on the master
computer and also on your mobile device, moni-
tor and analyze at anytime.

The WEINIG App-Suite and viaCockpit offer you
the possibility to always keep an eye on your
production flow and material management. The
system enables the monitoring and evaluation
of order data, increases production reliability
through maintenance instructions and optimizes
production. Thanks to open interfaces, the
system is future-proof and can be seamlessly
integrated into existing IT landscapes.

The viaConnector Edge is your link between the
machine and the viaCockpit. It offers you con-
venient access to your machine data and makes
it available locally or in the cloud at a destination
that you define individually.

EXPORT



For advanced data analysis, viaConnector
Edge lets you export your collected data as
a CSV file for transfer to ERP or SQL data-
bases at the touch of a button.



viaMonitor

For monitoring and
evaluation



viaNotify

Reports possible
errors



viaOrder

Provides an over-
view of the order
progress



viaMaintain

Informs about due
maintenance



viaCondition

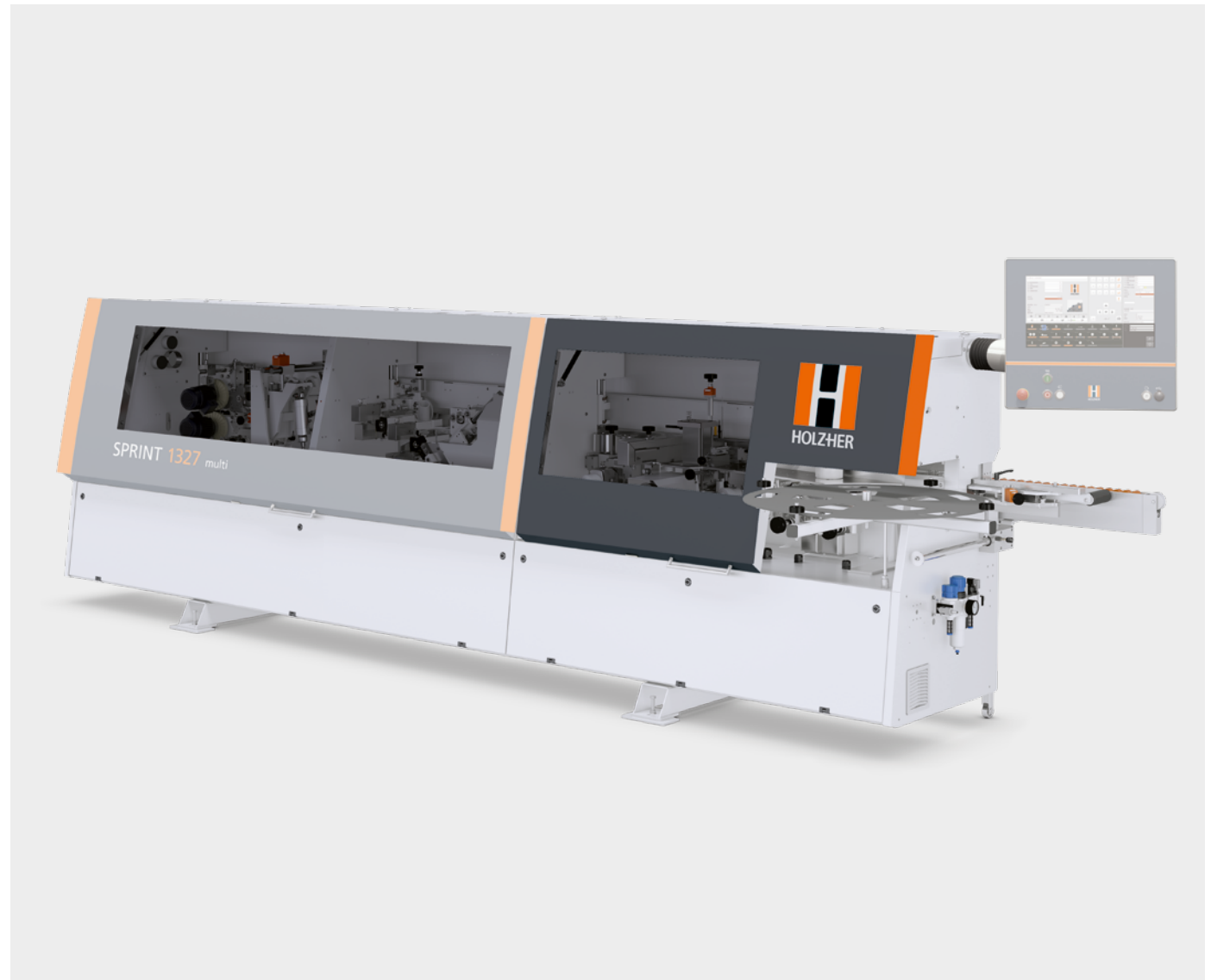
Optimizes machine
utilization

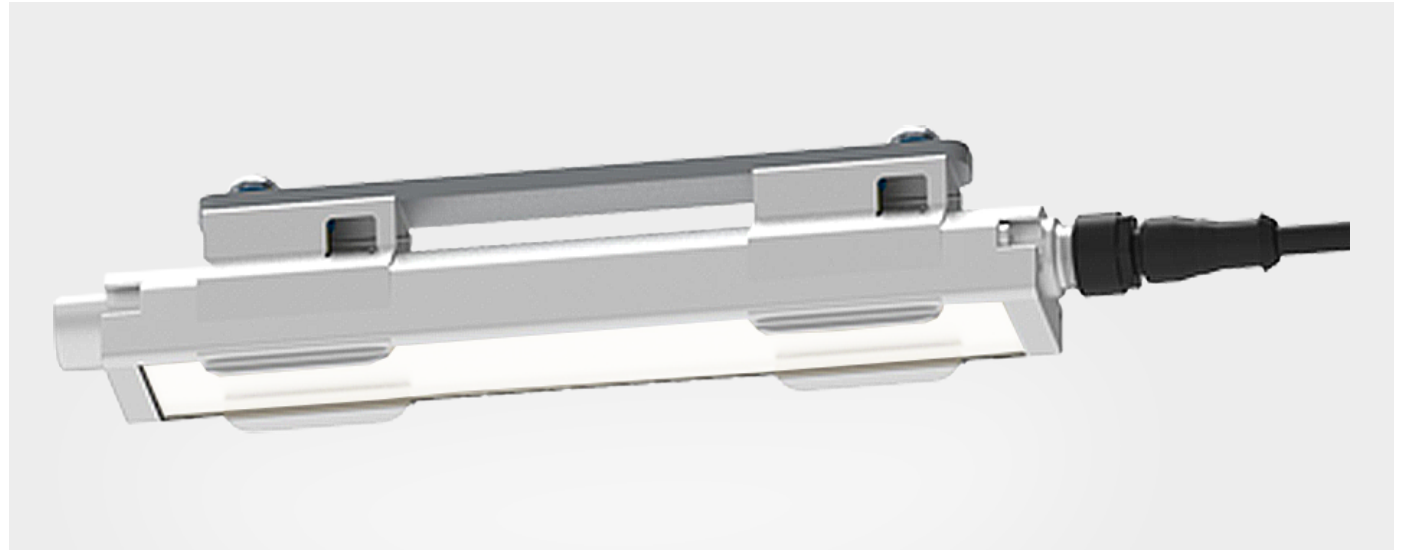
PROTECTIVE HOOD AT INFEED AREA

Continuous design with multiple
protection function

The protective hood provides additional noise
protection. Airborne dust in the infeed area is
avoided, especially in dusty production areas.
The pressure unit remains protected and perma-
nently ensures that the highest demands are met.

- Additional noise and dust protection
- Optical upgrade of the machine
- No CE obligation





LED LIGHTS

Modern LED technology with tempered, shatterproof glass

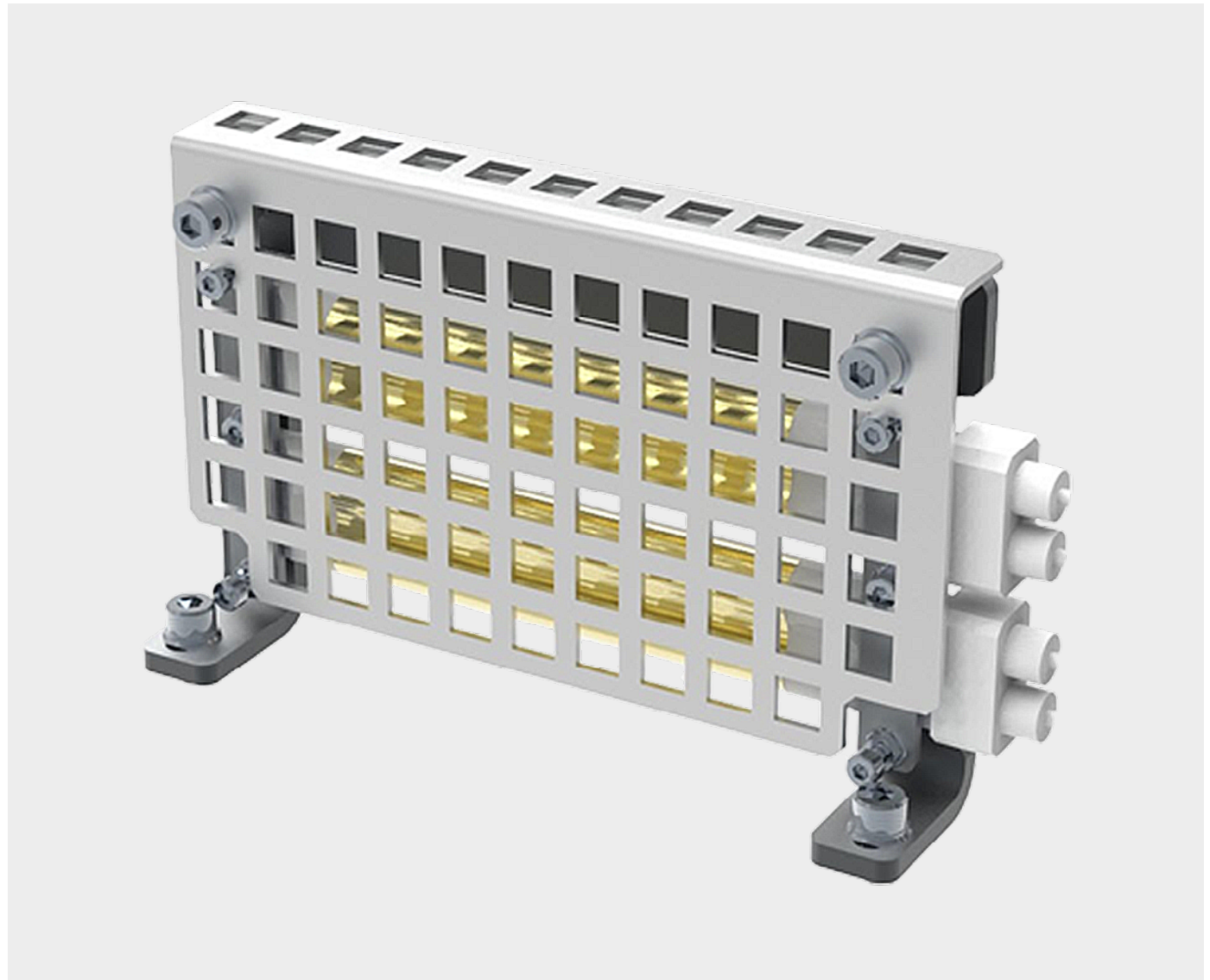
- In the infeed and finishing areas
- Explosion proof safety glass
- Optical workpiece sequence display on the locking roller
- Machine status display (malfunction, emergency stop, etc.)



INFRARED HEATER ZH701

The IR heater heats the front edges of the workpieces before the glue is applied. Temperature and glue strength are always related. The panel temperature should not be below 15°C for edging. Especially during the cold season when panel material is moved from different locations. In the worst case, the panel material is not yet warm enough. Preheating the workpiece edge ensures the correct temperature and can be decisive in terms of glue strength.

- Heats panel edges to the ideal temperature before glue application
- Better adhesion
- Especially useful in cold workshops





AUTOMATIC CHAIN LUBRICATION

- Intelligent automatic transport chain lubrication
- Sensor-controlled unit, for metering lubrication to match load

RETURN-MASTER 5920

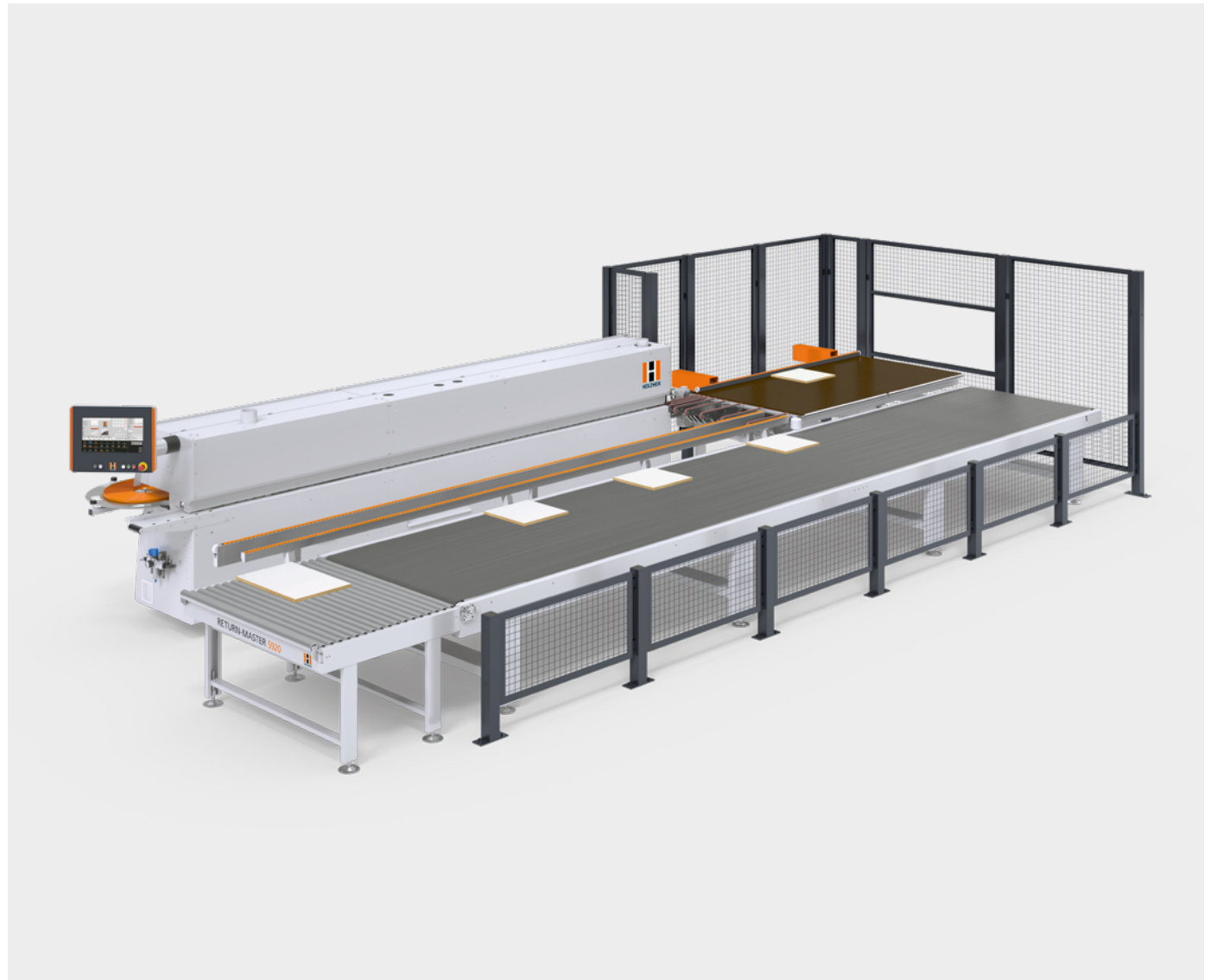
Your entry into convenient material handling

Automation is becoming increasingly important even in smaller workshops, to ensure they remain competitive and operate profitably. The RETURN-MASTER sets the stage for automated edgebanding, regardless of whether mass production or batch one. This HOLZ-HER return system provides for efficient one-person operation for higher productivity and maximum flexibility.

- One-man operation
- Manufacturing cell with fully integrated safety concept
- Sturdy construction, low maintenance and durable

CONNECTION PACKAGE CONSISTING OF:

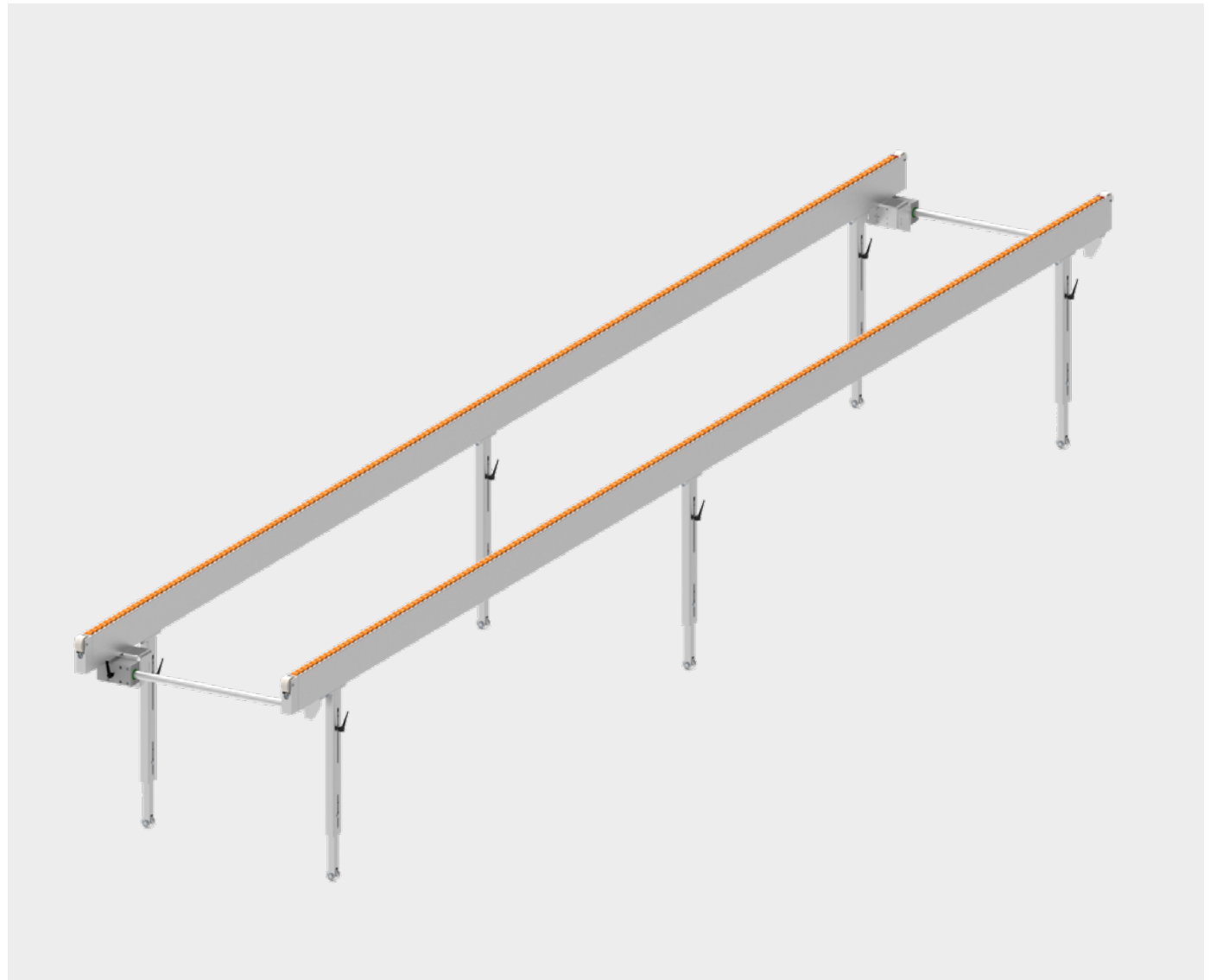
- Emergency stop linkage
- Feed adjustment
- Light barriers with control modules
- Adjusted workpiece support
- Safety devices according to valid machine guideline CE compliant



SECOND WORKPIECE EXTENTION

Recommended for particularly large, bulky and especially heavy workpieces, such as doors or countertops. The additional workpiece extension is parallel to the transport bridge thanks to its solid round bar guides. The workpiece extension moves effortlessly into position and locks securely for safe machining. Large rollers at the infeed and outfeed ensure safe edge-protection handling.

- Additional distance 600 mm
- Sturdy construction for high loads
- Including connection set
- Height adjustable
- Lockable
- Ideal for particularly long, heavy and large workpieces
- Gentle transit for your material



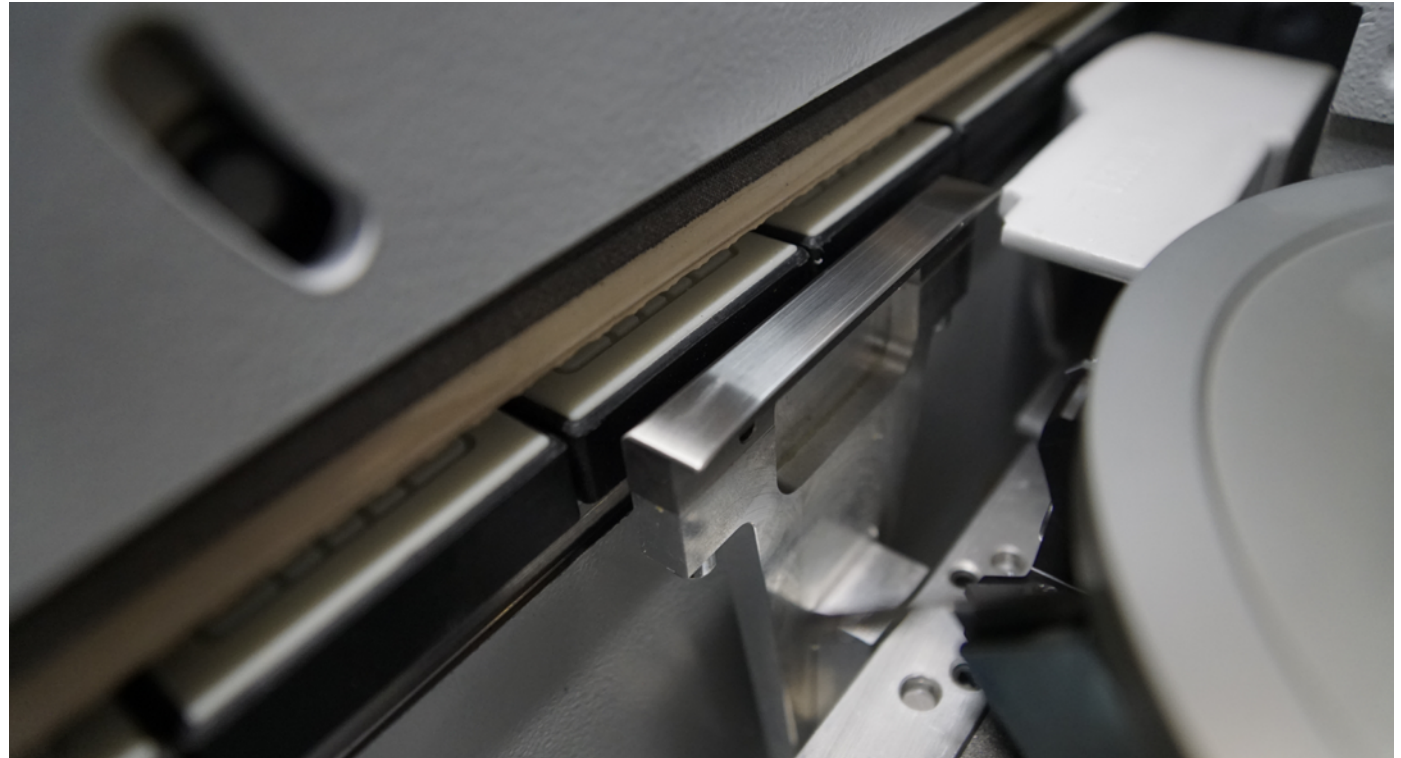
NESTING TRACER SHOES

For clean and uniform tracing, of already machined workpieces after nesting or CNC machining. At the cutter unit and the radius scraper unit tracer shoes are attached to the underside in place of the tracing rollers.

- For a cutter unit and radius scraper at the underside
- Necessary for hinge holes or larger recesses (nesting process)

Optional

- Top and bottom mounted nesting tracer shoes instead of tracer rollers
- For trapezoidal and pointed workpiece contours
- Also hinge holes and larger recesses



INFEED FENCE 820 MM

For precise infeed of your workpieces to the pre-milling unit. Easily adjustable via precise SIKO counters. Solid stop on durable, low-maintenance linear guides.



EXTENDED INFEED FENCE 1350 MM

For a precise infeed of your workpieces to the pre-milling unit. Easily adjustable via precise SIKO counters. Solid stop on durable, low-maintenance linear guides.

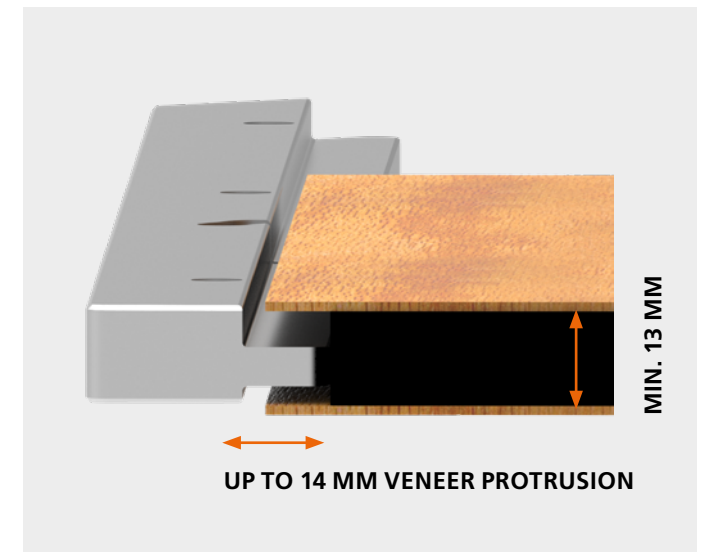
Your upgrade options

MOTORIZED ADJUSTMENT

- Automatically adjustable via the control unit
- Edge thickness can be set individually (cutting dimension = finished dimension)

VENEER STOP

- For guiding workpieces with protruding veneers



AIR CUSHION TABLE

Easy and gentle material handling

Additional table to the machine infeed for easy and gentle material handling. Generated air cushions provide a floating material feed.

LENGTH: 1800 mm, **WIDTH:** 600 mm

- Height adjustable frame feet
- Fully integrated air nozzle
- Ideal working height (880 – 900 mm)
- Safe infeed of long components
- Fully controlled via the control panel

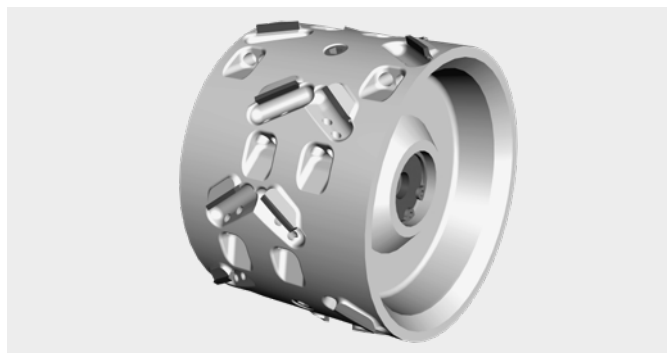
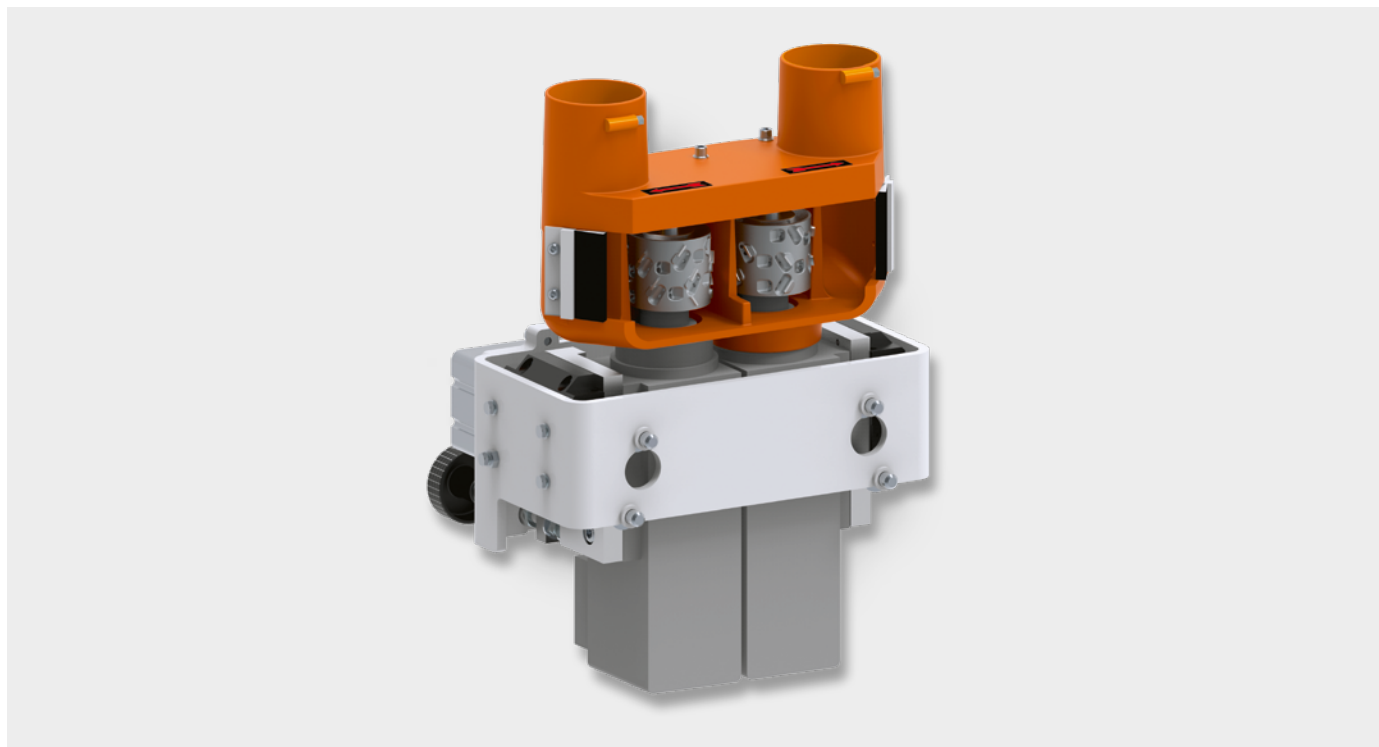


PRE-MILLING UNIT FG501

Excellent cutting quality during pre-milling

Cut edges often have small tears in the top layer. The pre-milling unit ensures perfect gluing surfaces and prepares the panels for gluing. Equipped with the patented Air-Stream technology and diamond tool. Including height adjustment for optimum cutter utilization.

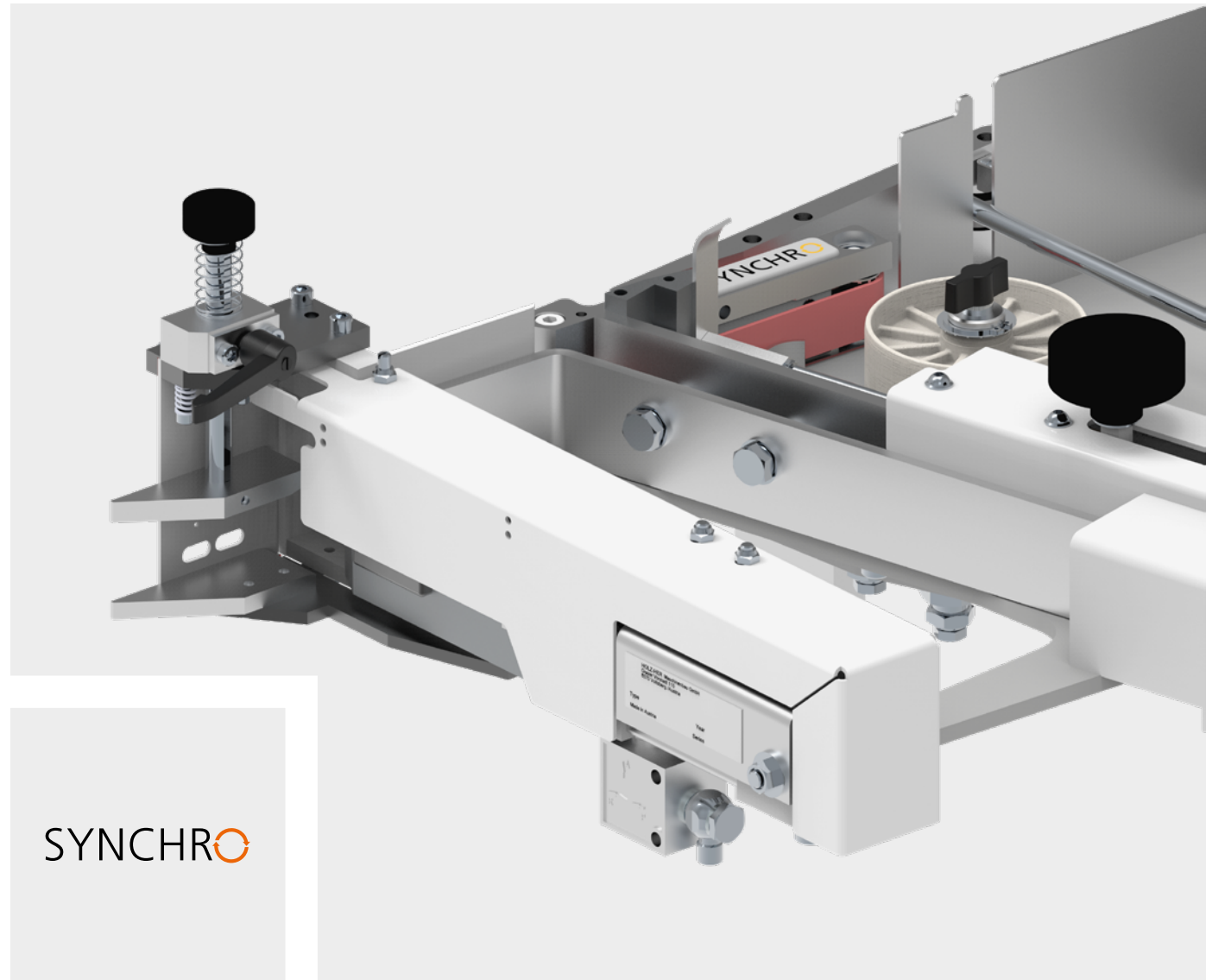
- Twin-motor pre-milling
- 1 x clockwise / 1 x counter clockwise operation
- Incl. diamond cutter, Ø 70 mm
- Air-Stream technology – HOLZ-HER / LEUCO patent
 - Quiet operation
 - Up to 99% chip capture
 - Significantly reduced double chipping
 - Long service life and low maintenance



EDGE FEEDING MG705 SYNCHRO

The magazine guarantees short workpiece distances by synchronous adaptation to the feed rate and at the same time optimizes edge protrusions. Slight infeed angle due to the nozzle concept – problem-free feeding of solid wood edges up to 15 mm.

- Flush trimming in standard up to 8 mm
- Automatic transport of coils and strips
- Automatic adaptation to the feed rate
- Pre-trimming up to 65 mm edge height
- Without any slippage due to drive belt
- Adjustable edge protrusion
- Low infeed angle allows perfect processing of solid wood lipping



SYNCHRO

EDGE FEEDING MG705 SYNCHRO

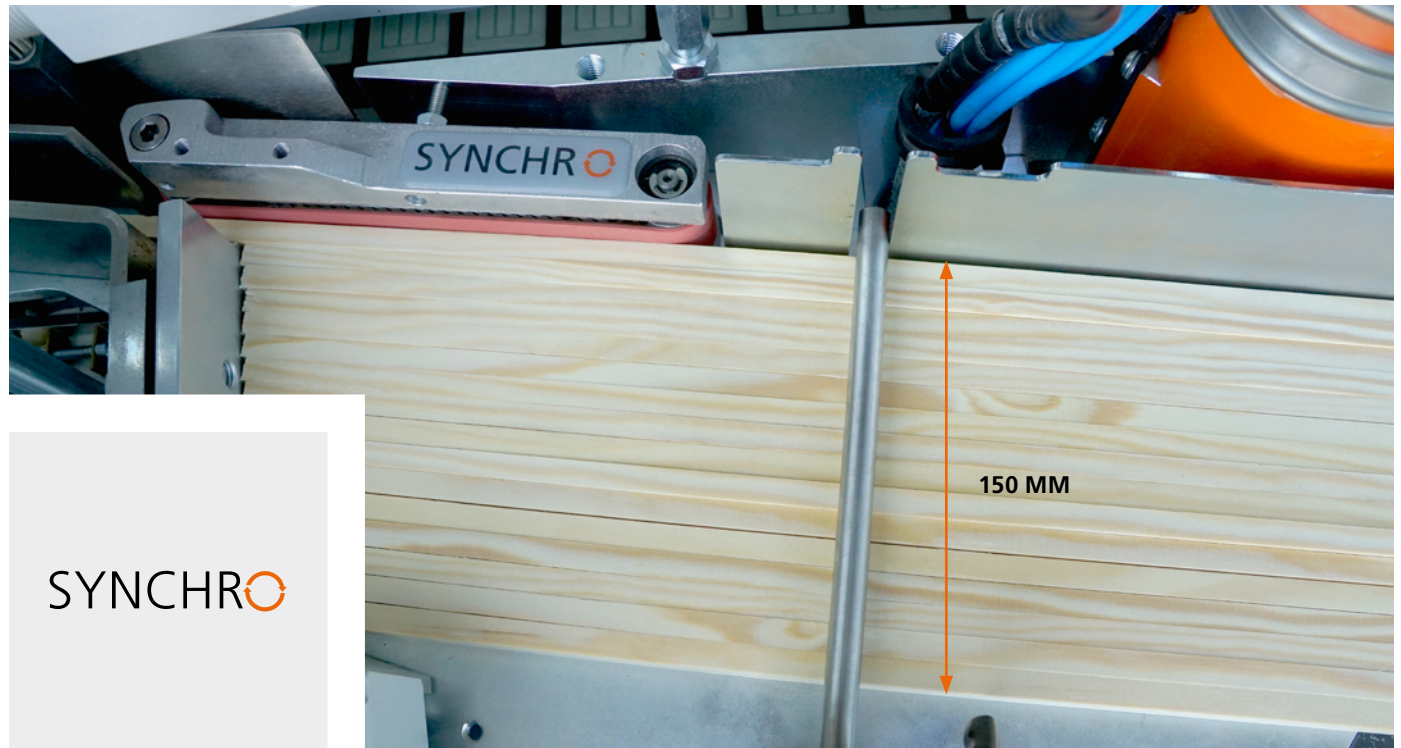
solid wood application

Thanks to the large cutter units, solid wood lippings up to 15 mm thick can be machined on the SPRINT doors without compromise.

- Edge cross-sections up to 15 x 65 mm (depending on material)
- 7° infeed angle enables stress-free edge-banding of solid wood lippings
- Short distance between glue application and first pressure roller

Solid wood edge lippings up to a magazine width of 150 mm can be fed via the automatic edge feeder.

Example: With an edge thickness of 8 mm, up to 18 edging strips can fit into the automatic preloading unit.



SYNCHRO

GLUE APPLICATION SYSTEM

The heart of the edgbanding machine

With the Glu Jet-Hybrid-Technology from HOLZ-HER, you can process EVA and PUR glue in one system as standard. Via the 3-fold heating system, consisting of ring heater, main heater and nozzle heater, the Glu Jet is ready for use within 3 minutes. Valuable production time is gained and energy costs are reduced as a result.

- **Zero joint with thin-film technology**

With the HOLZ-HER Glu Jet system, you can process PUR glue on a standard basis; just as simply as EVA glue

- **Fast and uncomplicated changeover**

From EVA to PUR and from cartridge to granule form

- **A clean machine**

The sealed system prevents the glue from burning, ensuring that it maintains its original colour and does not emit any adhesive vapor

- **Remaining glue quantity indicator**

The operator knows how many running meters can still be produced at all times

- **Sensor controlled automatic reloading**

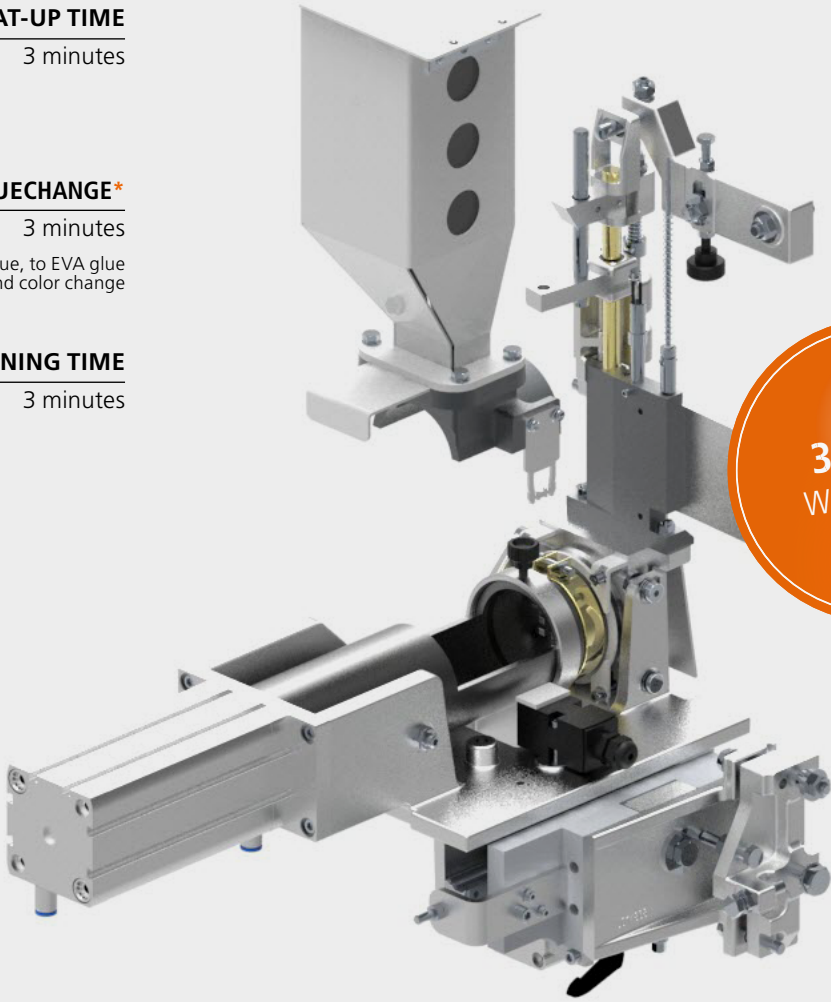
- **Just-in-time heat-up**

The complete gluing unit is fully ready for use in 3 minutes

- **100% adhesive strength**

By melting the adhesive as required

- **Low maintenance system**




HEAT-UP TIME
3 minutes

GLUECHANGE*
3 minutes
* to PUR glue, to EVA glue and color change

CLEANING TIME
3 minutes

3-YEAR WARRANTY

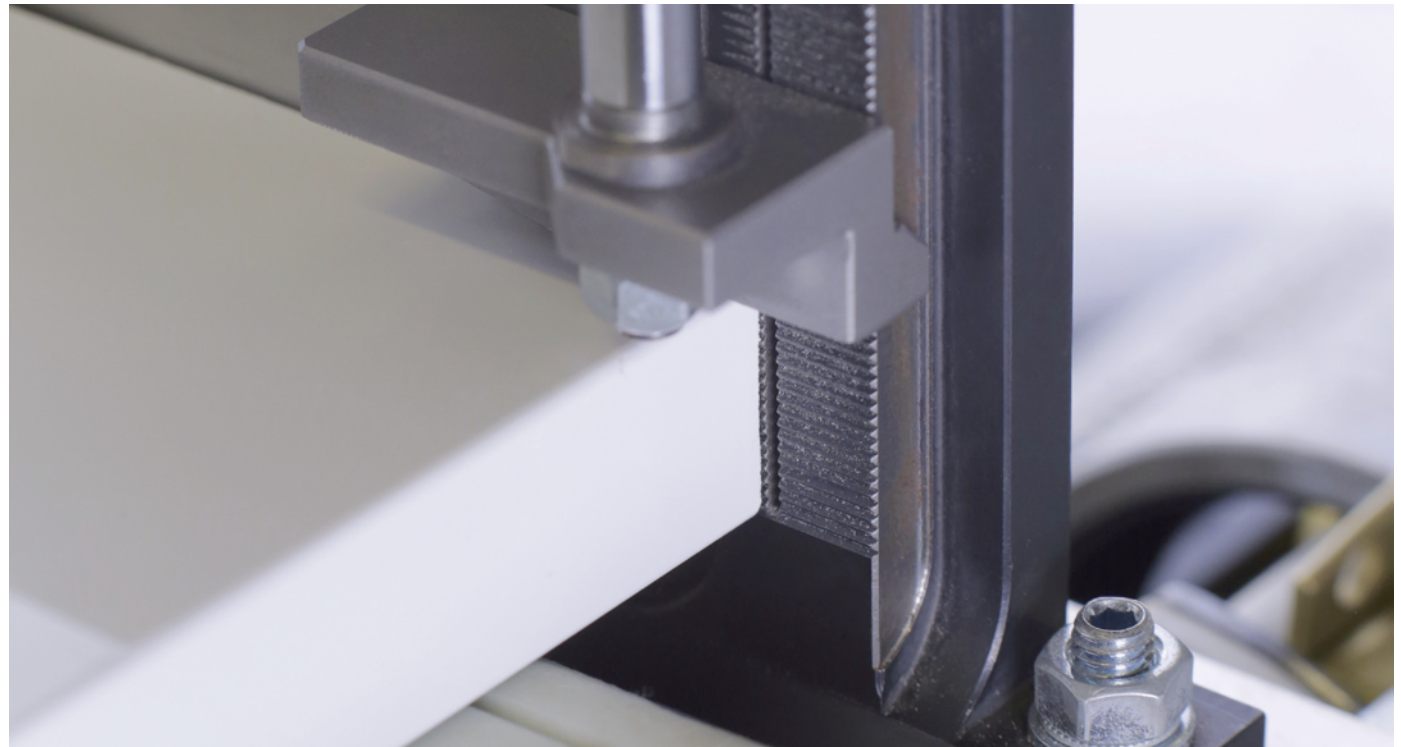


GLUE APPLICATION SYSTEM

Precision at the highest level

GluJet automatically adapts to all common panel thicknesses worldwide via the optimized nozzle segmentation. Tolerances in the panel thickness are compensated by the tracing nozzle. The sensing shoe is spring-loaded and opens the nozzle exactly to the sensed panel thickness. The GluJet thin film technology means the glue penetrates deep into the panel structure. You get a high strength joint and an invisible joint at the same time. Due to the 90° separation in 1 mm increments, the glue can spread evenly during edge pressing. For example, 19 glue lines are applied to a 19 mm panel, each forming a valley towards the outer edge of the panel. With this ingenious combination, the glue does not form above the joint.

- Zero joint with thin film technology
- Clean and clear nozzle application system in 1 mm increments, for uniform homogeneous glue application
- The amount of glue is exactly as required. This saves costs and increases quality
- Tracing nozzle for precise glue application

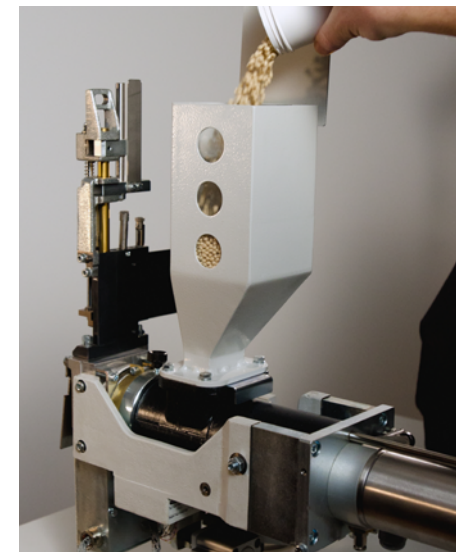


GLUE TYPES

The right type of glue for every decor

With the HOLZ-HER GluJet system, all common types of glue in cartridge as well as granule form can be easily processed in one system. Polyurethane glue gives you tremendous advantages due to its water-resistant properties, especially in the bathroom and kitchen furniture.

- **White EVA glue**
For your inexpensive bright decors
- **White PUR glue**
For your waterproof light furniture
- **Neutral EVA glue**
For your dark decors
- **Transparent PUR glue**
For your waterproof dark furniture

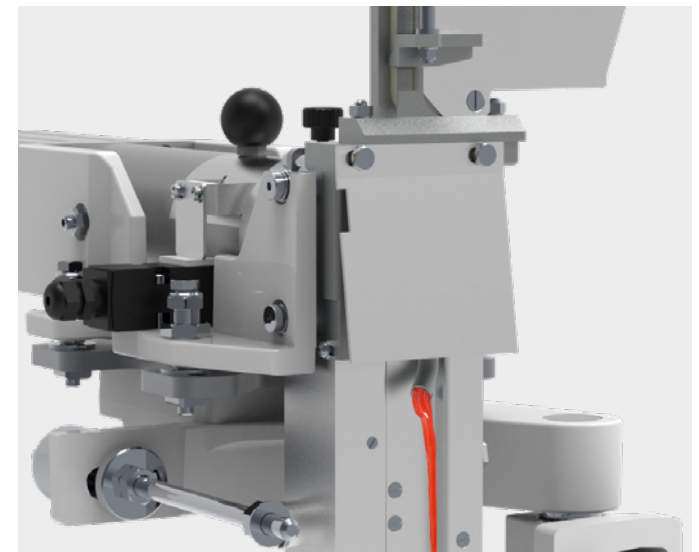


CLEANING

Simple, clean and uncomplicated

With the help of special cleaning cartridges or granules, the chemical process of the PUR is stopped by means of a neutralizer. For better identification, the cleaner is colored and can be easily distinguished from the glue. The rinsing process is performed by pressing a button on the touch display. Optionally, the entire cleaning process can be controlled with the use of iTronic, ensuring a high level of operating safety. The complete system is thoroughly and completely cleaned with the correct temperature as well as the appropriate pressure and optimized cycle. An integrated purge hole in the metering rod directs residual glue or cleaner into the collection container in a clearly visible manner and can then be conveniently disposed of. When using PUR glue, cleaning of the system is required after 48 hours. It is easy to conserve the system over periods of non use.

- In a few minutes the complete system is completely cleaned
- PUR adhesive always under control
- Guided process (with iTronic option)
- Fast and uncomplicated changeover from EVA to PUR and from cartridge to granule form



GLU JET COLLECTION CONTAINER

Catches PUR and EVA

When rinsing, larger glue residues are produced, which are collected within the container. A soft glue-repellent insert made of silicone ensures a permanently clean tub. This saves annoying and expensive cleaning work and ensures a clean machine appearance.

- Integrated in the machine
- For collecting glue residues during the rinsing process
- Capacity for four 300 gram cartridges
- A heat-resistant non-stick silicone insert ensures easy emptying of the container
- This reduces the cleaning effort enormously



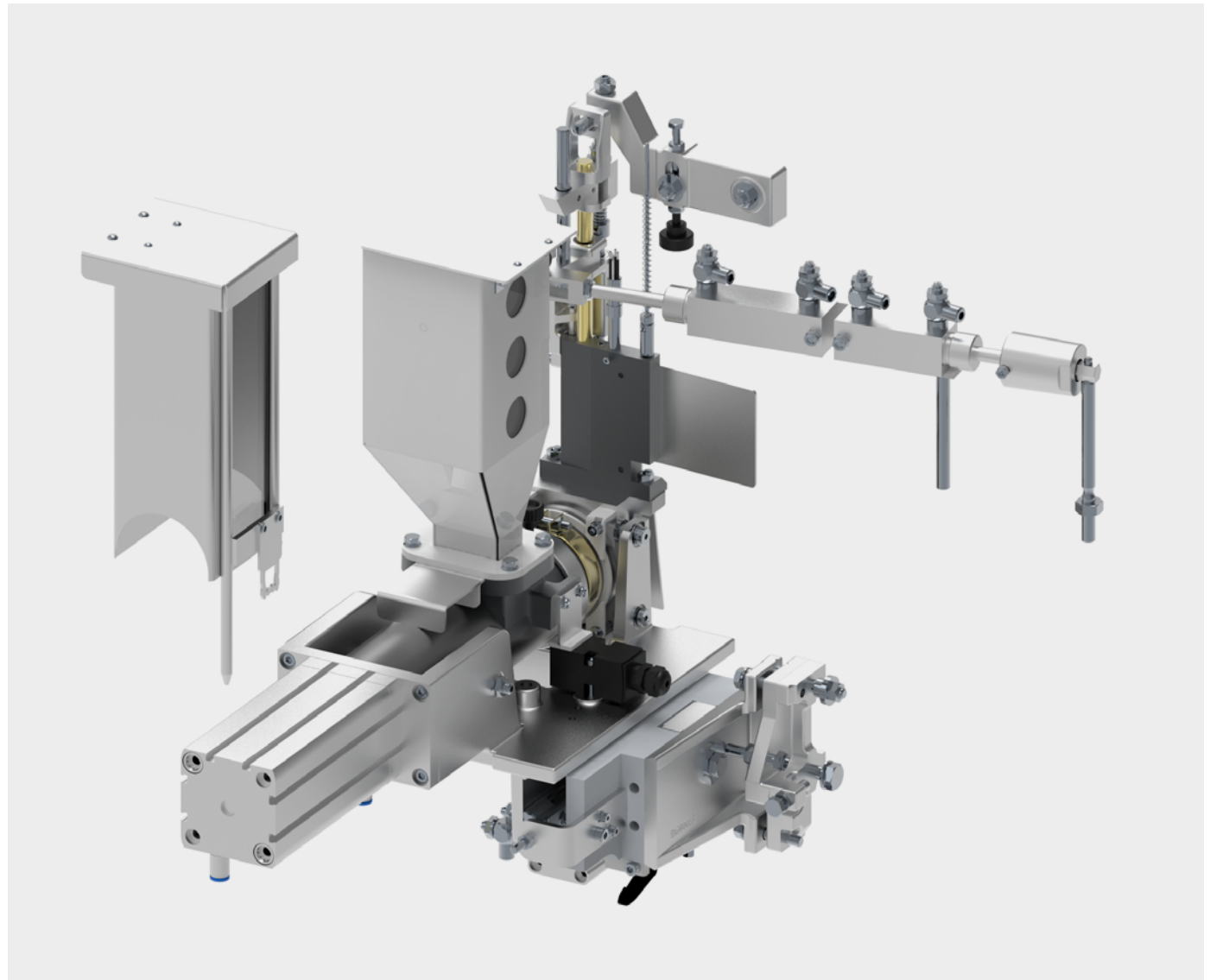
GLUE APPLICATION

Glue application system Glu Jet GJ301 automatic

For industrial processing of EVA- and PUR-Glue cartridges of approx. 0.3 kg or use granules. The practical hoppers can be used to preload sufficient glue, which is automatically reloaded by sensors. The Glu Jet automatic moves independently to the glue or rinse position. An extremely practical function, especially when no glue is to be applied during machining.

■ Glu Jet-Hybrid-Technology

- All advantages of the HOLZ-HER Glu Jet system
- Automatic glue height adjustment via tracing nozzle
- Automatic positioning to glue or rinse position
- Incl. cartridge hopper for 4 cartridges (approx. 1.4 kg)
- Incl. granule hopper for approx. 1.5 kg of granules
- Incl. pressure regulator for automatic control of the cartridge contact pressure
- Low maintenance

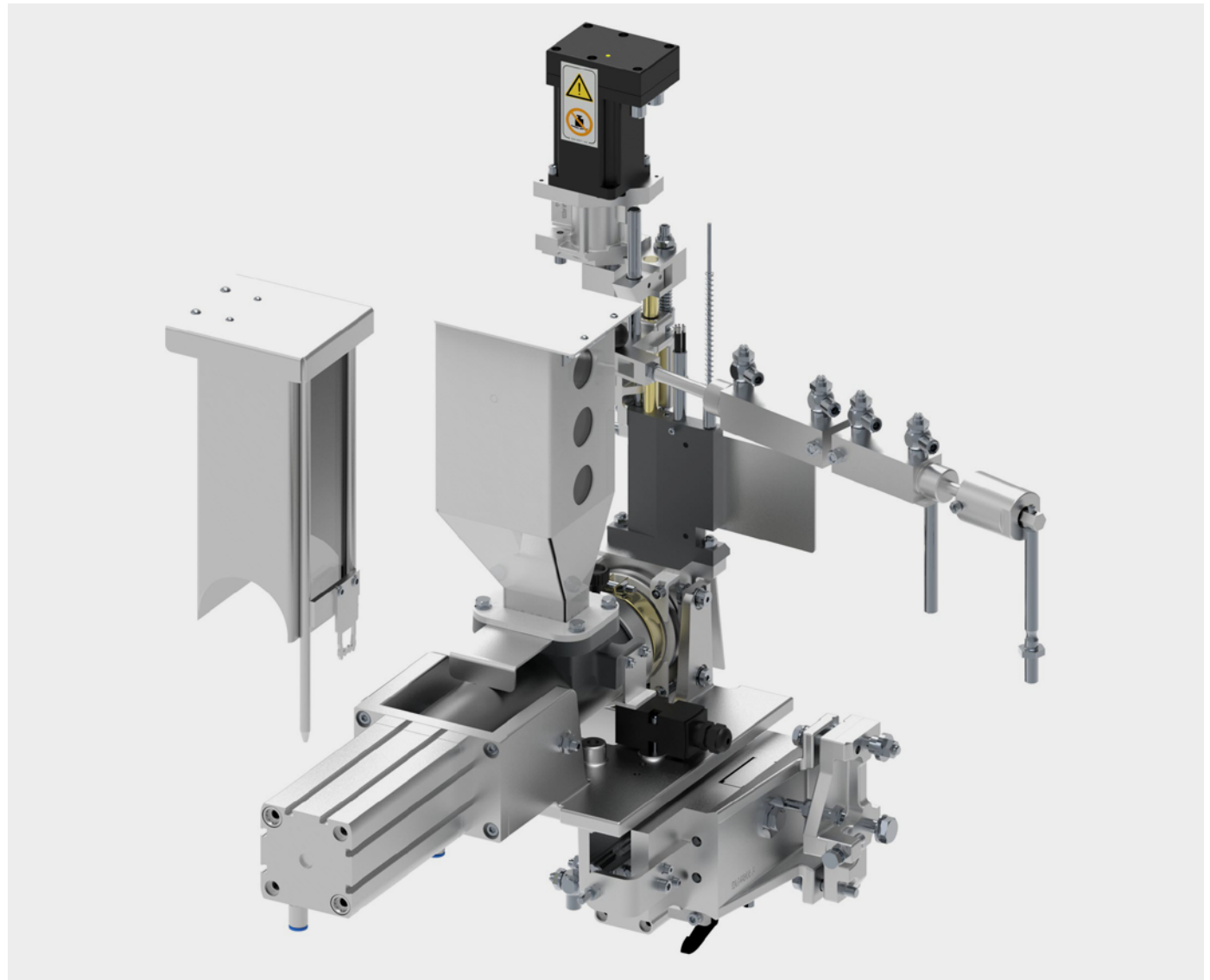


GLUE APPLICATION

Glue application system Glu Jet GJ301 automatic NC

With the NC servo axis, the glue height adjustment can be carried out independently of the machine bridge. An added value for highly sensitive panel surfaces. The Glu Jet automatic moves independently to the glue or rinse position. An extremely practical function, especially when no glue is to be applied during machining.

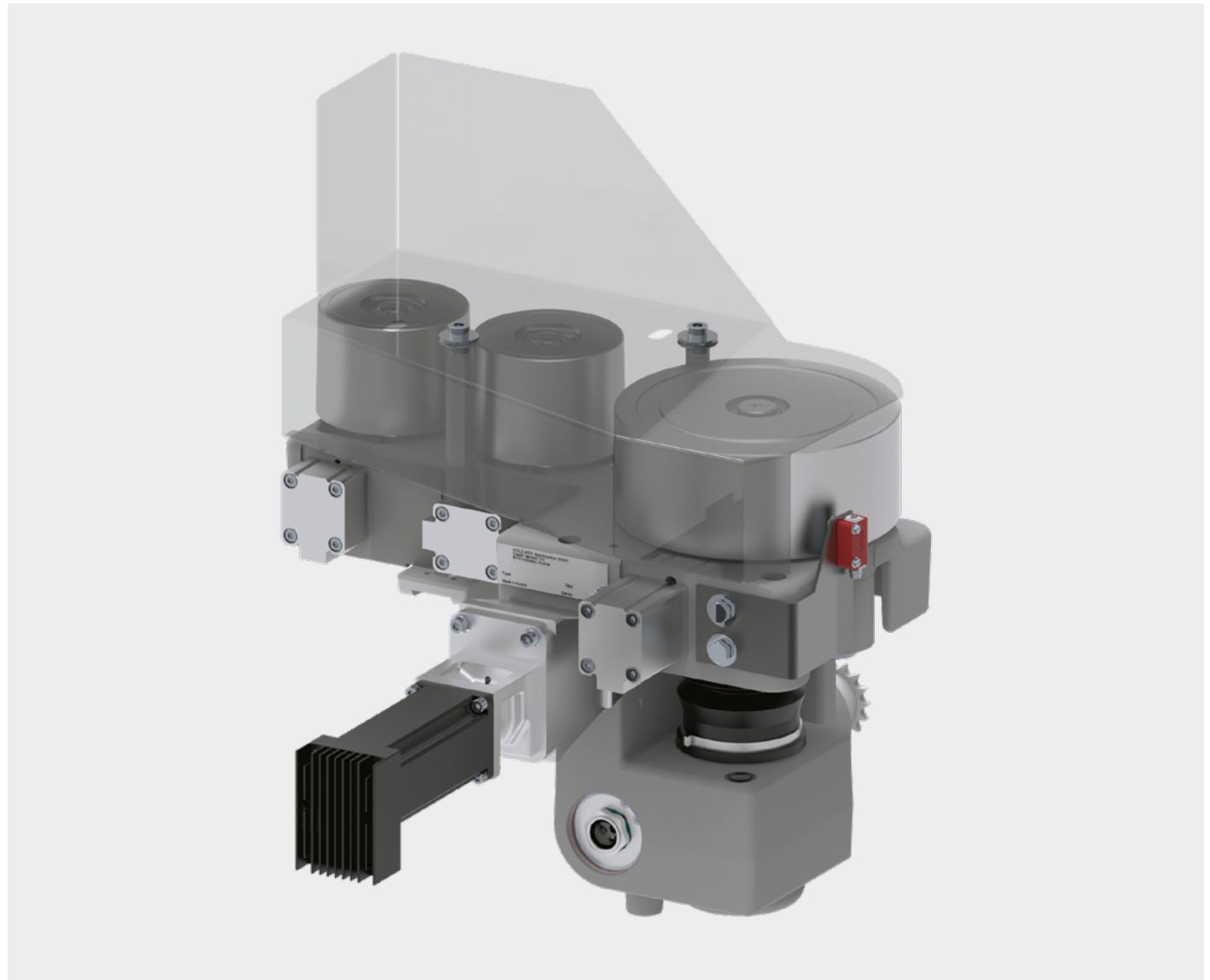
- **Motorized, automatic glue height adjustment**
- **Glu Jet-Hybrid-Technology**
All advantages of the HOLZ-HER Glu Jet system
- Automatic positioning to glue or rinse position
- Incl. cartridge hopper for 4 cartridges
(approx. 1.4 kg)
- Incl. granule hopper for approx. 1.5 kg of granules
- Incl. pressure regulator for automatic control of the cartridge contact pressure
- Low maintenance



PRESSURE UNIT DW501 MOT

Synchronously driven pressure unit with automatic adaptation to feed rate thanks to NC servo-axes for motor-driven adjustment to correct edge thickness. Straight and conical pressure rollers for perfectly glued joints.

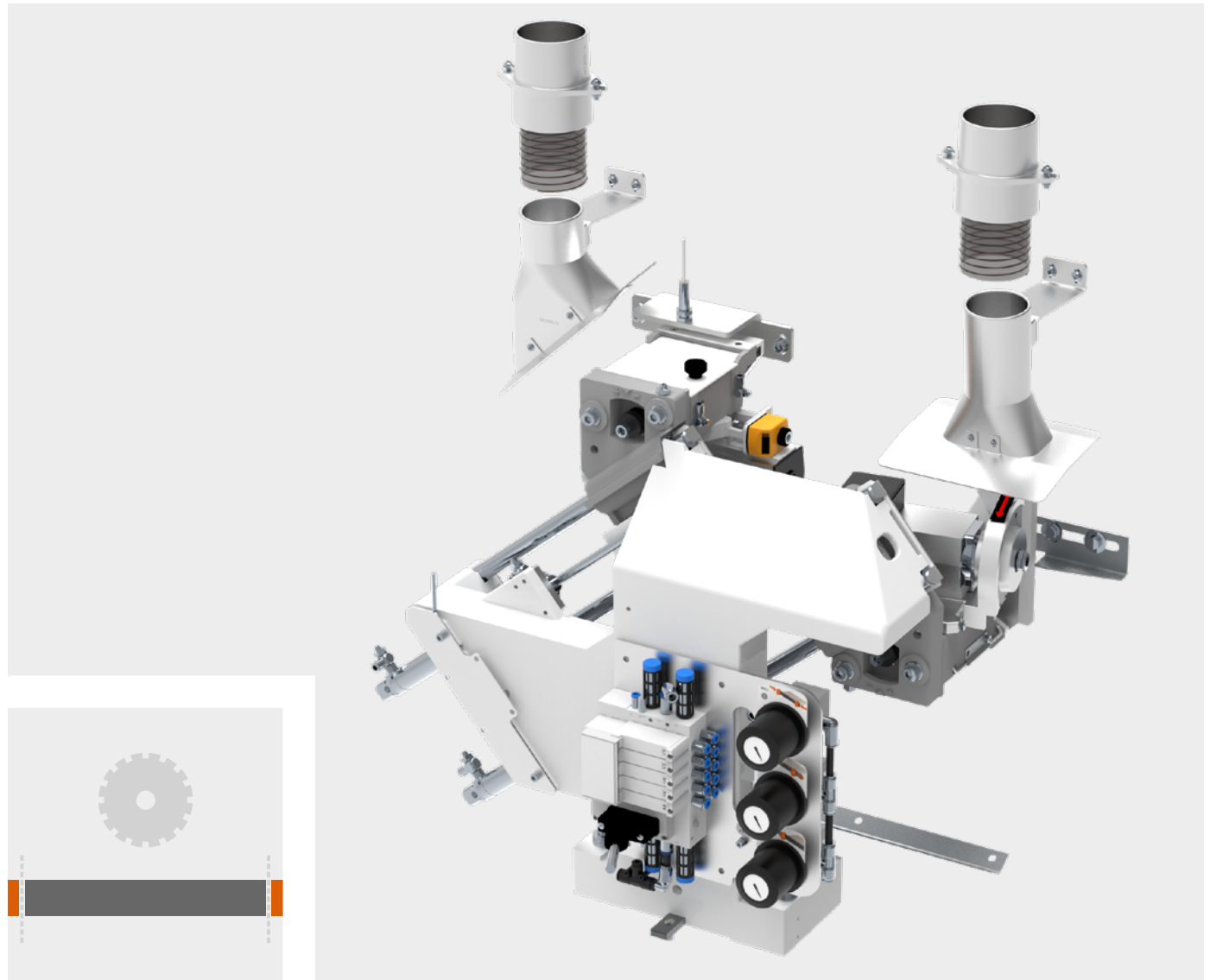
- First roller driven – synchronously adapted to the feed rate
- Two conical pressure rollers for optimum joint sealing
- Individual pneumatic control of the pressure rollers
- Program-controlled adjustment of the edge thickness via NC servo axis



END TRIMMING UNIT KA501

For straight or chamfered end trimming on thin edging; a standard feature allows this unit to be pivoted to 10° pneumatically. High quality design with sturdy cast iron stand. Saw motors, each on two guides for precise edge trimming.

- Pneumatic pivot to 10° – for thin edges
- Extraction hoods included
- Optimum workpiece gap due to short trim-cut cycles

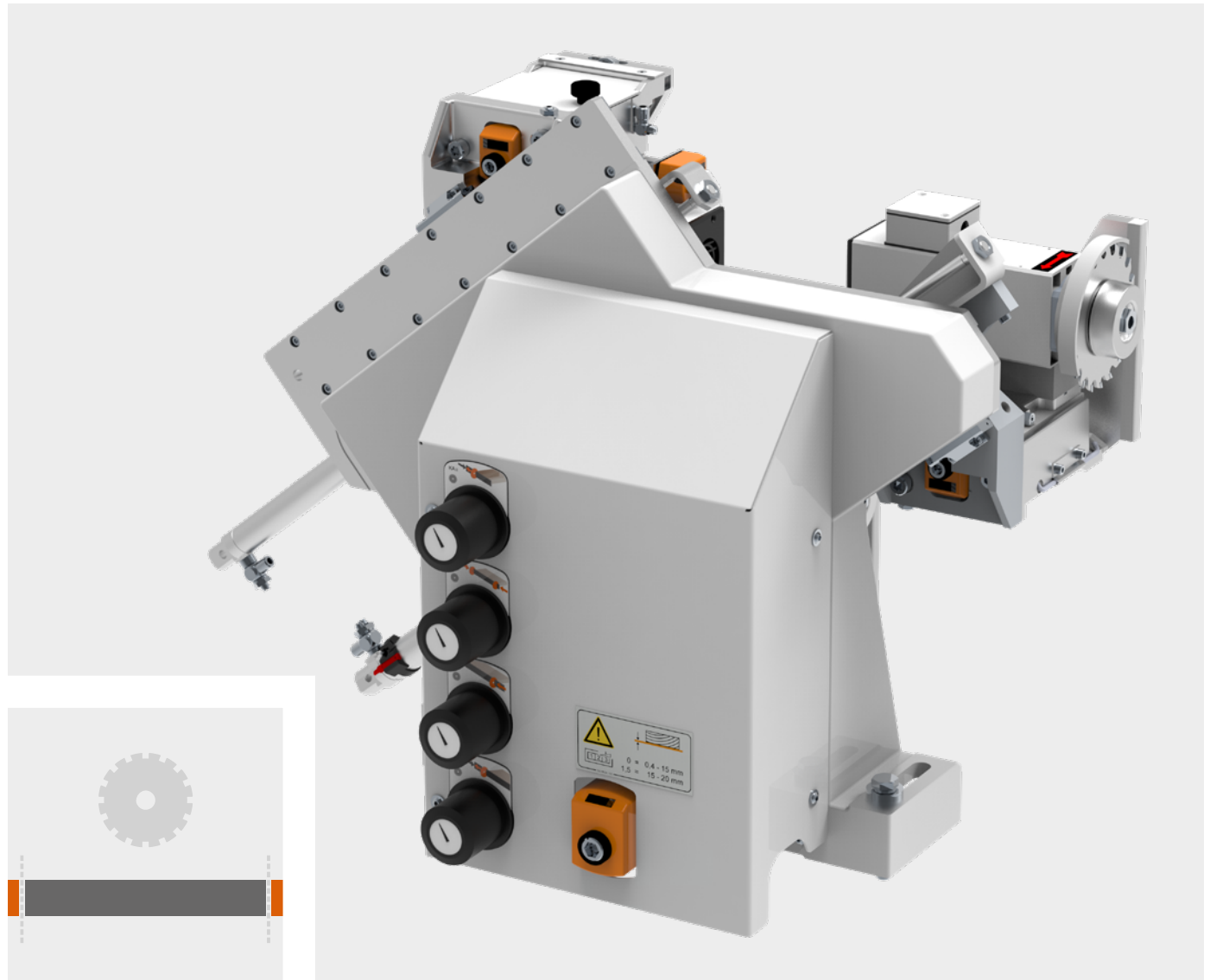


END TRIMMING UNIT KA702 PNEU

Most powerful end trimming
unit in its class

The end trimming unit consists of two separate
sawing units that are precisely guided on sur-
face-hardened linear guides. Solid wood edge
with a thickness of 15 mm are perfectly sawn
flush with this robust unit.

- Surface hardened linear guides
- Max. edge thickness 15 mm
- Two carbide WZ saw blades
Z 22, Ø 120 mm
- Pneumatic pivot to 10° –
for thin edges
- Two extraction hoods included
- Optimum workpiece gap due
to short trim-cut cycles



CROSS-CUT COLLECTION CONTAINER

Compact and effective

The practical container catches the off-cuts from the cross-cut unit and thus ensures more cleanliness and safety in the workplace.

- Simple and space saving
- No off-cuts on the floor
- No container under the machine
- Easy to empty



CUTTER UNIT FR301 MOT6

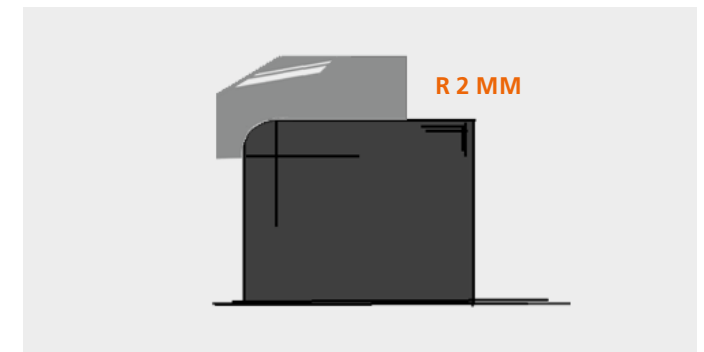
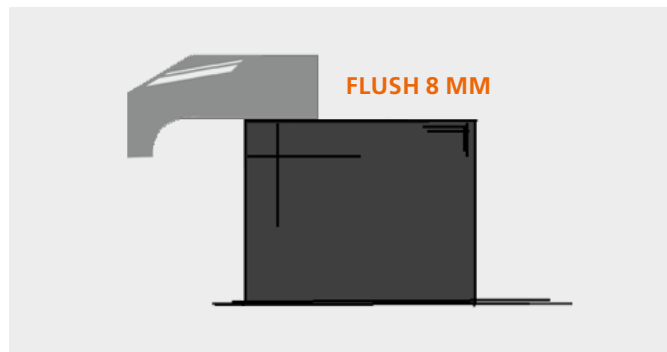
100% repetition accuracy
at the touch of a button

This unit has 6 NC servo drives that are moved to position with repeatable accuracy and precision. Multi-stage diamond tools ensure highly flexible machining. The appropriate tool is chosen automatically, the selection is made at the push of a button on the display via the program selection. Setup times are thus greatly minimized.

- 2 stage diamond tools
- Extremely precise tolerance mechanics,
6 fully digital NC servo axes
- Standard blowing nozzles in front of the sensing rollers
- Patented ProLock screw-in clamp for quick tool change

MULTI-PROFILE TOOL

- Flush 8 mm
- Radius 2 mm
- Other profiles selectable on request



CUTTER UNIT FR502 MOT6 MULTI

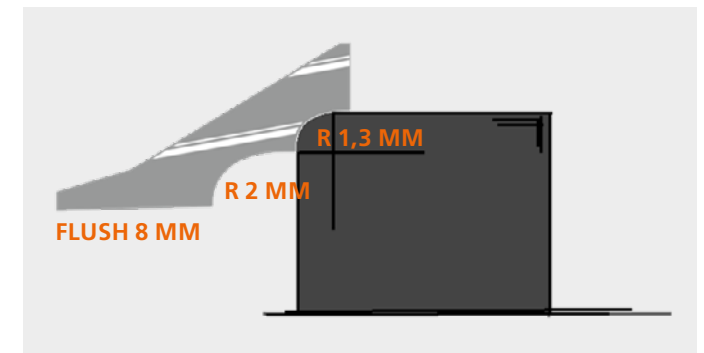
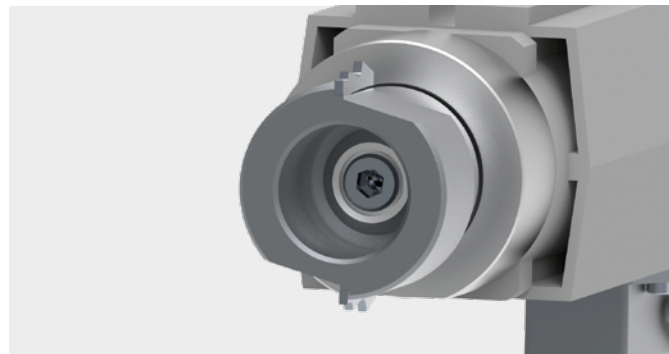
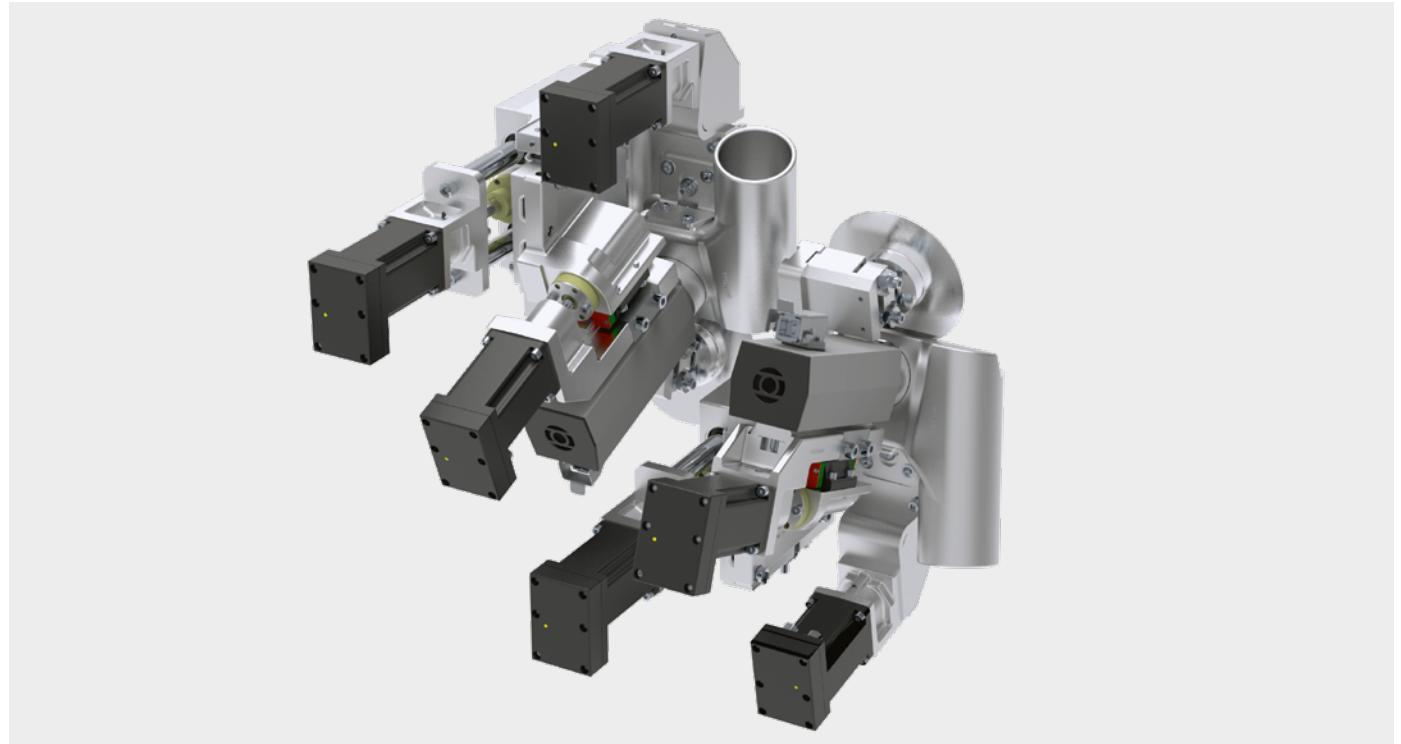
100% repetition accuracy
at the touch of a button

This unit has 6 NC servo drives that are moved to position with repeatable accuracy and precision. Multi-stage diamond tools ensure highly flexible machining. The appropriate tool is chosen automatically, the selection is made at the push of a button on the display via the program selection. Setup times are thus greatly minimized. The unit is equipped with inclined rollers, which are especially developed for the processing of high gloss edges.

- 3 stage diamond tools
- Extremely precise tolerance mechanics,
6 fully digital NC servo axes
- Solid construction with low-maintenance,
precise linear guides
- Standard blowing nozzles in front of the sensing
rollers

MULTI-PROFILE TOOL

- Flush 8 mm
- Radius 1.3 mm
- Radius 2 mm
- Other profiles selectable on request



CUTTER UNIT FR701 MOT6

Perfect results at high feed rates

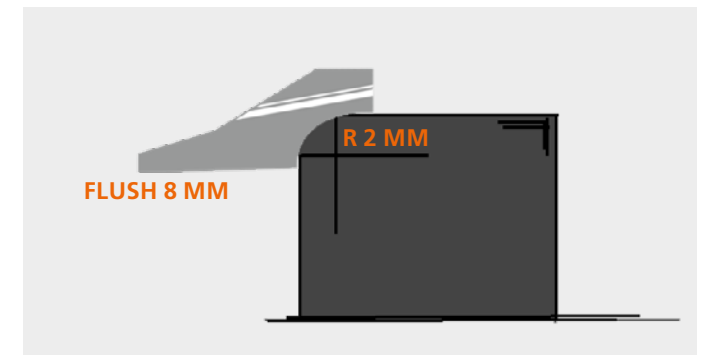
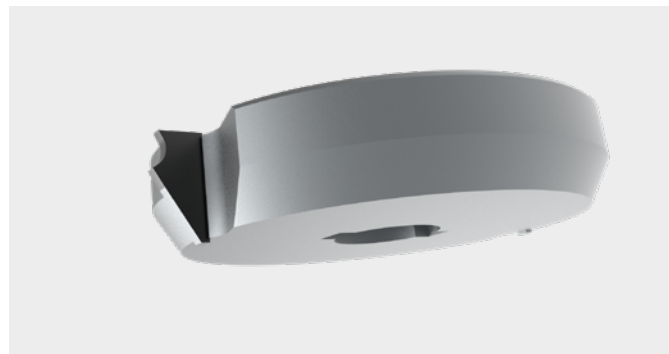
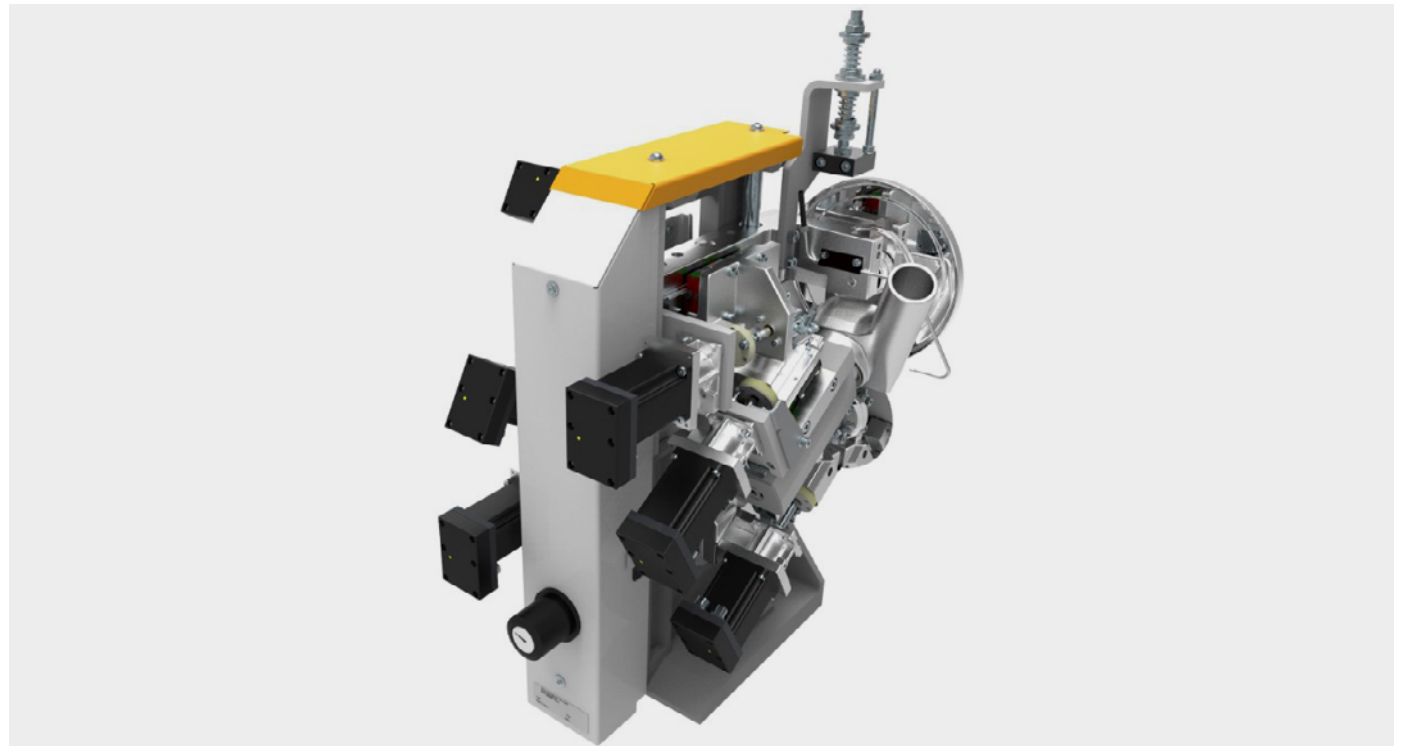
The heavy-duty stationary unit with shock-absorbing bearings and large feeler rollers has 6 NC servomotors. Two-stage diamond tools ensure flexible processing of your workpieces. The appropriate tool is automatically moved into the correct position via the program selection. Thanks to the intelligent software and robust design, you can achieve repeatable and precise machining results even at high feed rates.

With intelliSet, you can easily set your milling profile to an accuracy of a hundredth of a millimeter. This greatly minimizes set-up times.

The unit also has vertical chamfering rollers, which have been specially developed for processing high-gloss edges.

Translated with DeepL.com (free version)

- 2 stage diamond tools
(8mm flush + one profile, standard 2mm)
- Extremely precise tolerance mechanics,
6 fully digital NC servo axes
- Solid construction with low-maintenance,
precise linear guides
- Standard blowing nozzles in front of the sensing rollers
- Large tracing rollers for smoother workpiece tracing
- Other profiles selectable on request



CUTTER UNIT FR701 MOT6 MULTI

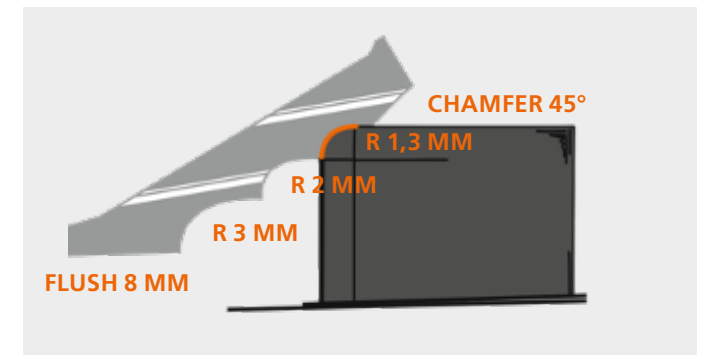
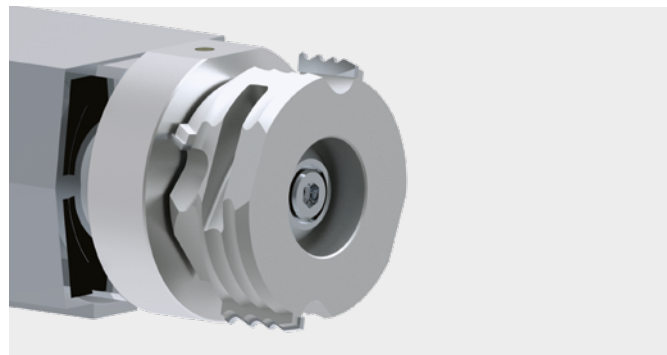
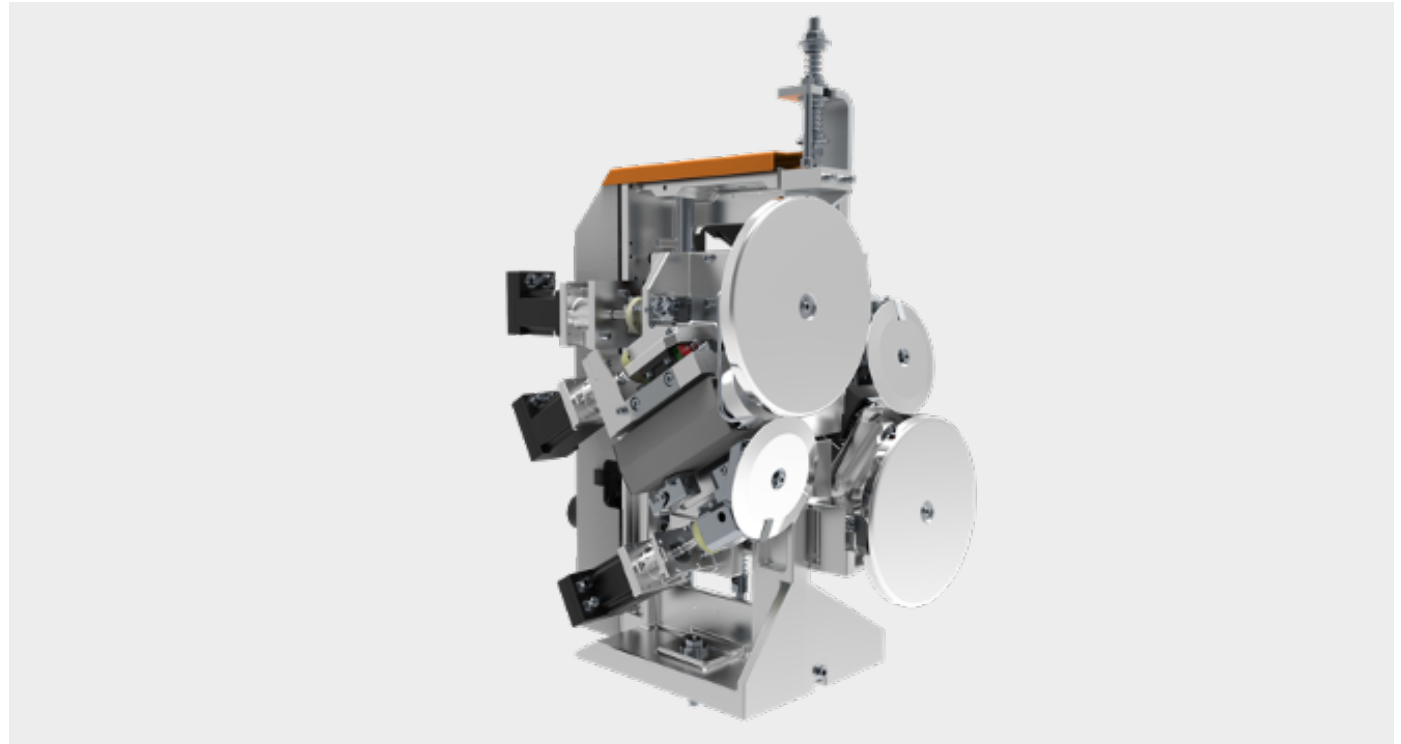
Perfect results at high feed rates

The heavy-duty floor-mounted unit with shock-absorbing mounting and large tracing rollers has 6 NC servo axes that are repeatable and precise even at high feed rates. Multi-stage diamond tools ensure highly flexible machining. The appropriate tool is selected automatically. The selection is made automatically at the push of a button on the display via the program selection. Setup times are thus greatly minimized. The unit is equipped with inclined rollers, which are especially developed for the processing of high gloss edges.

- 5 stage diamond tools
- Extremely precise tolerance mechanics, 6 fully digital NC servo axes
- Solid construction with low-maintenance, precise linear guides
- Standard blowing nozzles in front of the sensing rollers
- Large tracing rollers for smoother workpiece tracing

MULTI-PROFILE TOOL

- Flush 8 mm
- Radius 2 mm (2-fold)
- Radius 1.3 mm (2-fold)
- Other profiles selectable on request

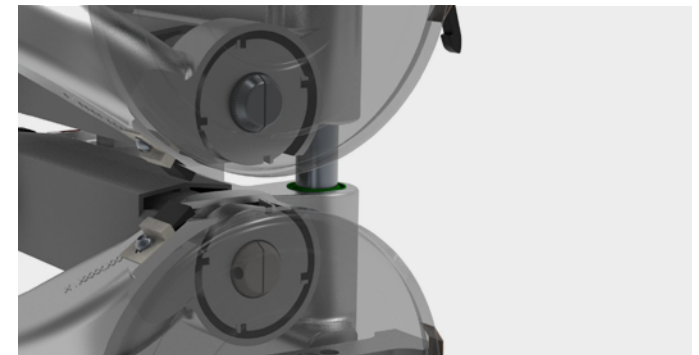
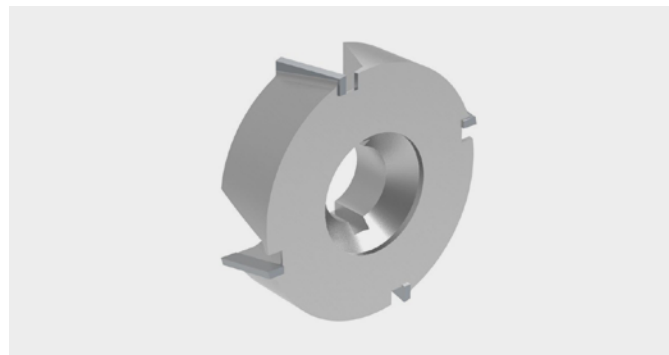
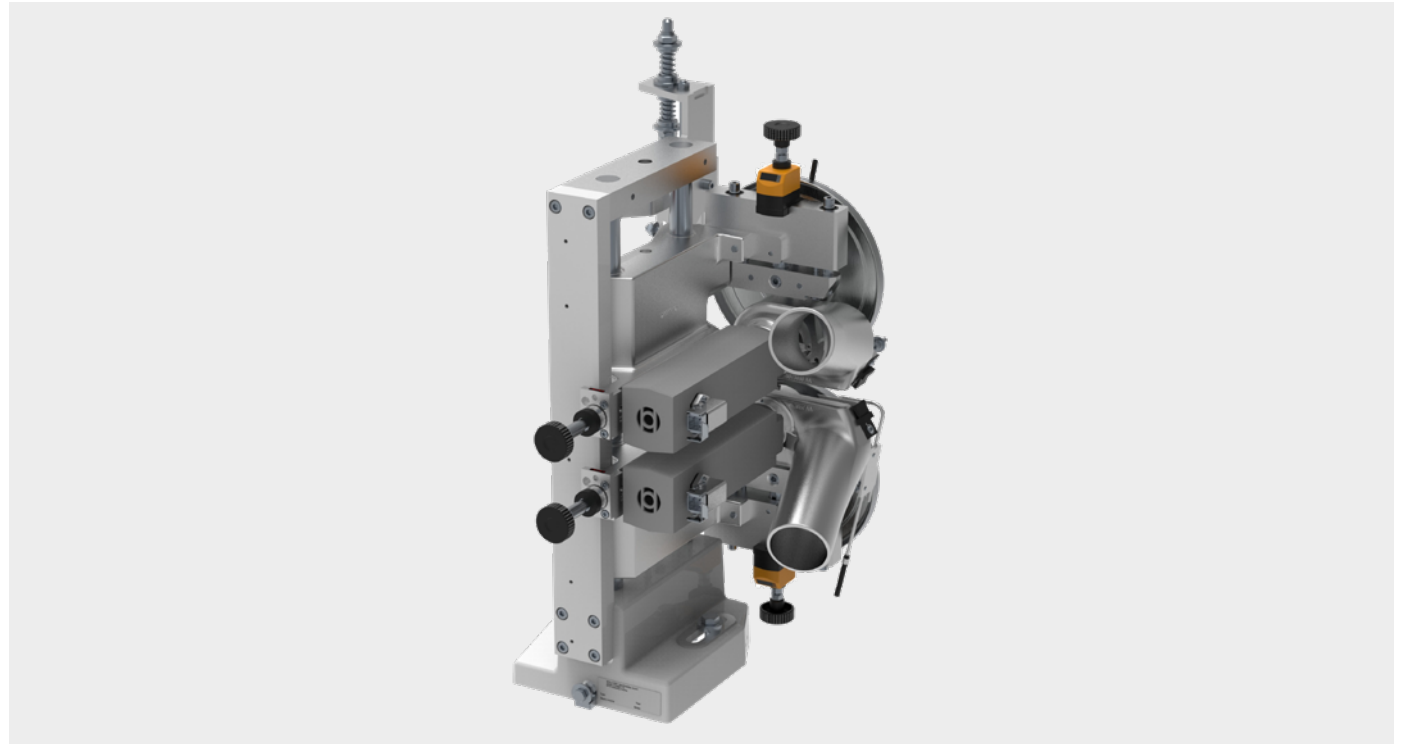


FLUSH TRIMMING UNIT BF501 MAN

Solid wood

High performance cutting unit for edge thicknesses up to 15 mm. Cutting possible with and without edge protrusion.

- Flush trimming up to 15 mm
- Maximum panel thickness of 60 mm
- Carbide knives
- Ø-70 mm cutter heads
- Cutting width 16 mm, Z4
- Air Stream System
- Patented ProLock screw-in clamp for quick tool change

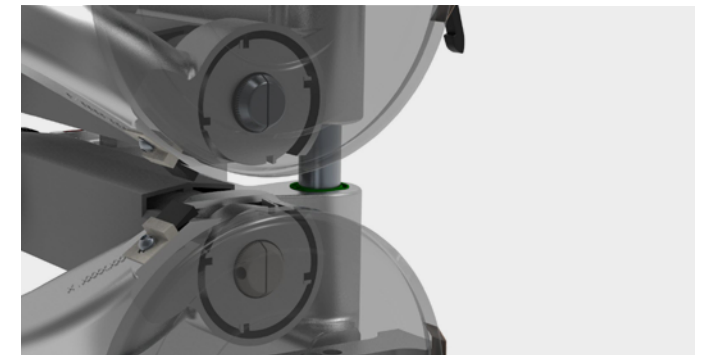
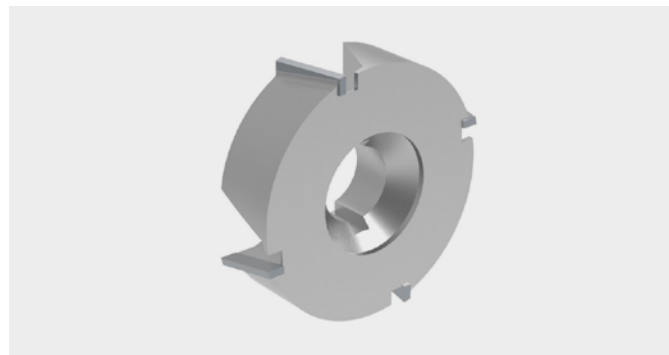
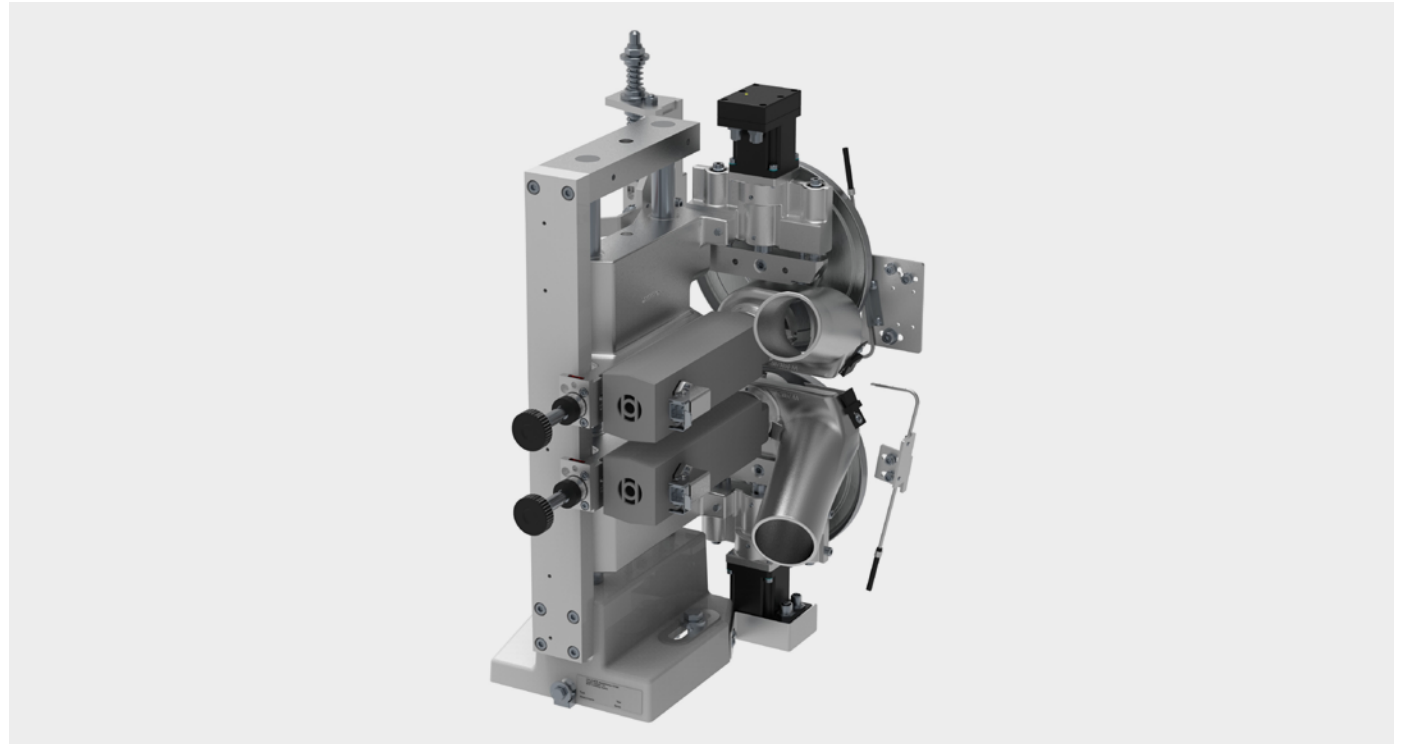


FLUSH TRIMMING UNIT BF501 MOT2

Solid wood

High performance cutting unit for edge thicknesses up to 15 mm. Two NC servo-axes for cutting with and without edge protrusion. Cutting possible with and without edge protrusion.

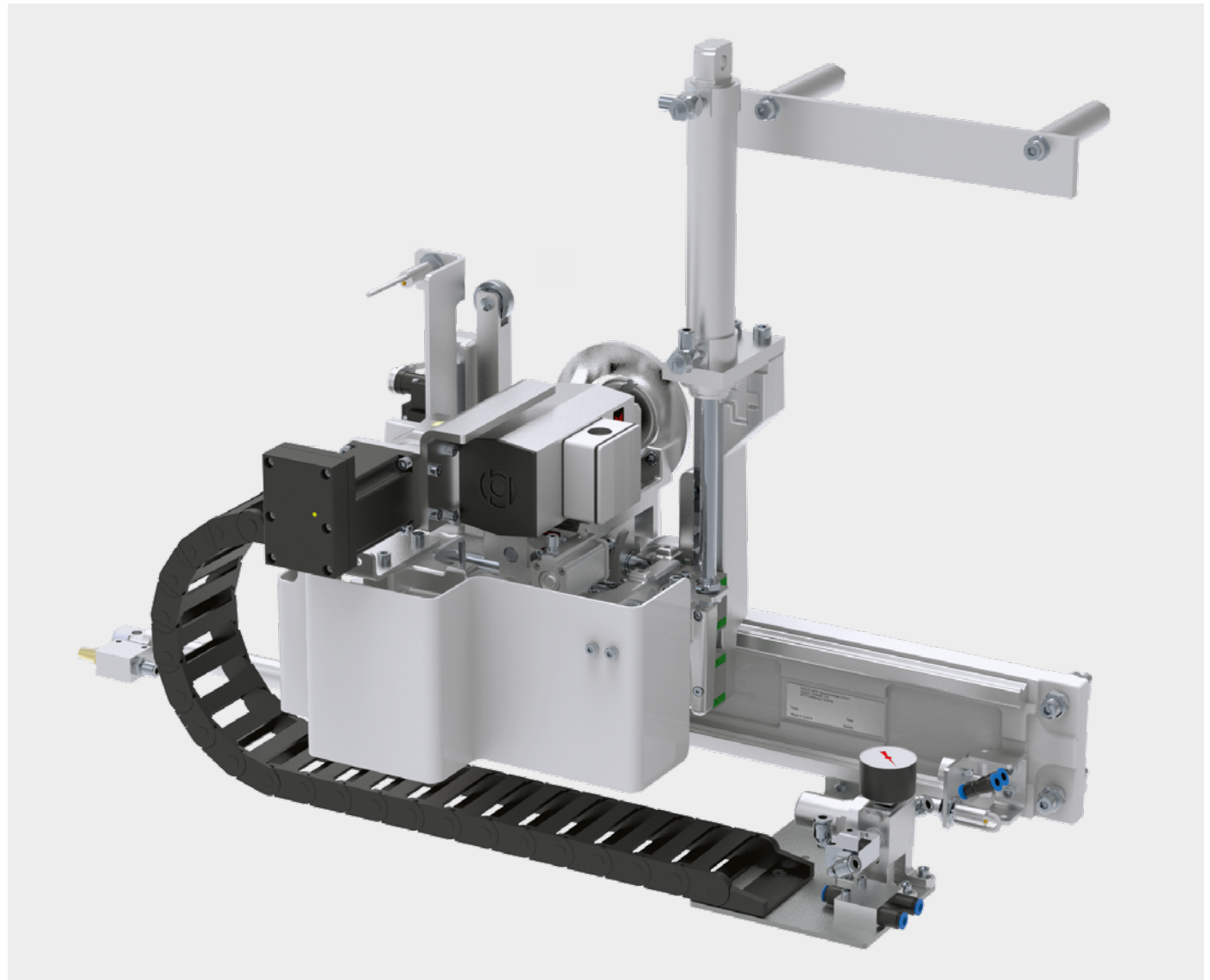
- Flush trimming up to 15 mm
- Maximum panel thickness of 60 mm
- Carbide knives
- Ø-70 mm cutter heads
- Cutting width 16 mm, Z4
- Air Stream System
- Patented ProLock screw-in clamp for quick tool change



CORNER ROUNDING UNIT FF301 MOT1

Unit for copying vertical, edges, various edge profiles possible – including postformed profiles. Integrated chip removal. With diamond tipped tools for long tool life.

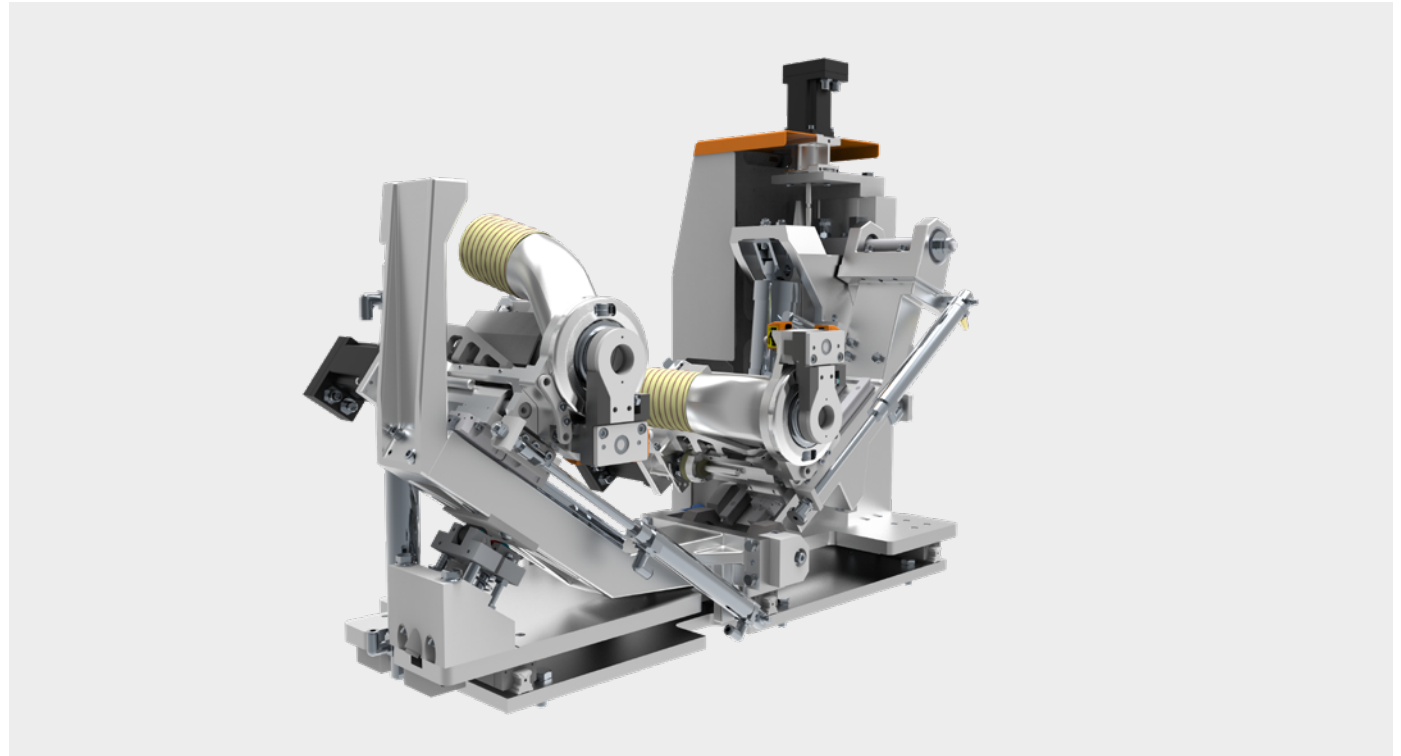
- Single-motor corner rounding unit incl. motorized horizontal axis adjustment
- Corner copying function up to 3 mm edge thickness
- Workpiece thickness: 12 – 60 mm
- Incl. diamond tipped cutter tool R = 2 mm,
- Incl. automatic extending device for edge thicknesses over 8 mm
- Maximum feed rate 10 m/min.
- Shelf program optional



CORNER ROUNDING UNIT FF701 MOT4

Unit adjustments on linear guides for 100% repetition accuracy at the push of a button. With standard blowing nozzles in front of the tracing rollers to blow off chips in front of the tracing areas. Includes shelf program for optimal processing of shelves with rounded corners. Includes intelligent pneumatics that automatically adjust the processing pressure settings depending on the feed rate and panel thickness.

- Twin-motor corner rounding unit
- With automatic pendulum tracer – front and rear separated – for perfect copying results
- Feed rate up to 18m/min
- Four intelligent proportional valves always ensure perfect pressure settings at all feed speeds and working heights



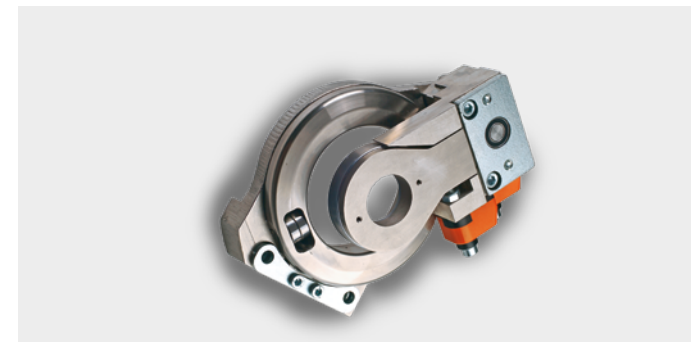
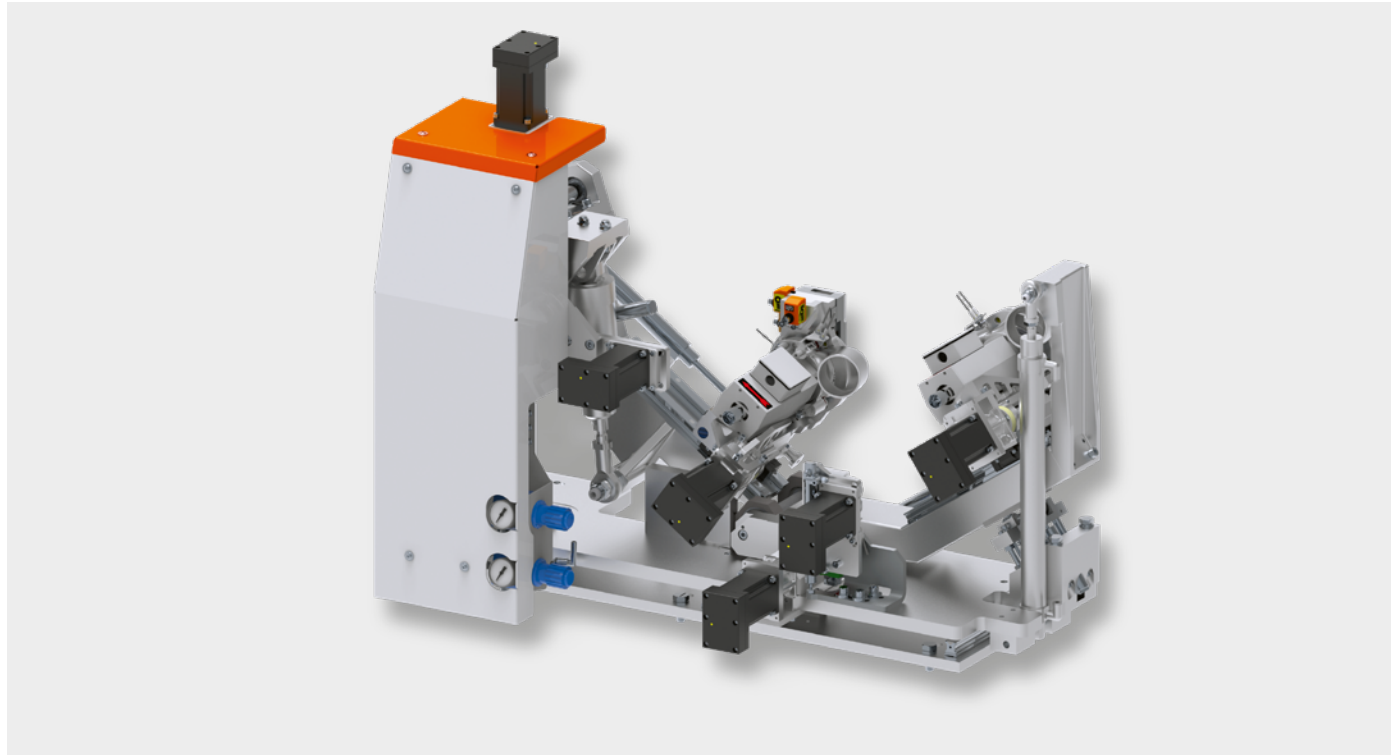
CORNER ROUNDING UNIT FF701 MOT6 MULTI

Unit adjustments on linear guides for 100% repetition accuracy at the push of a button. With standard blowing nozzles in front of the tracing rollers to blow off chips in front of the tracing areas. Includes shelf program for optimal processing of shelves with rounded corners. Includes intelligent pneumatics that automatically adjust the processing pressure settings depending on the feed rate and panel thickness.

- Twin-motor corner rounding unit
- With automatic pendulum tracer – front and rear separated – for perfect copying results
- Feed rate up to 18 m/min
- Four intelligent proportional valves always ensure perfect pressure settings at all feed speeds and working heights

AUTOMATIC REVOLVING TOOL QUATTRO FORM (LEITZ PATENT) WITH 6 NC SERVO AXES AND DIAMOND REVOLVING TOOL

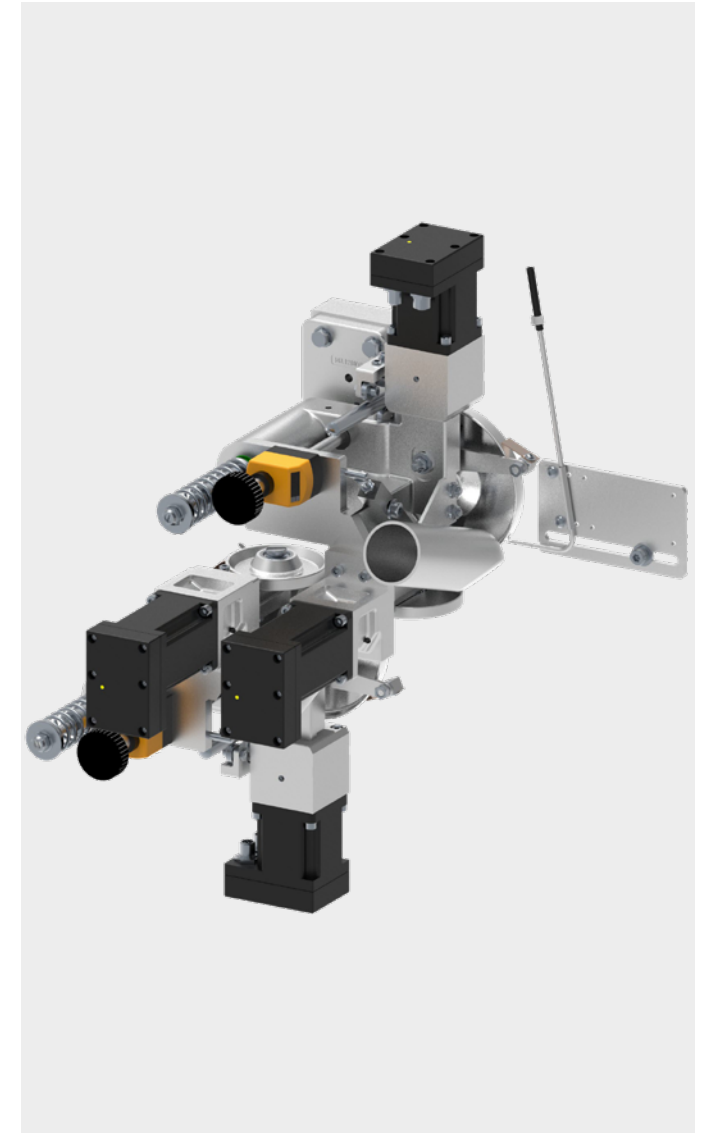
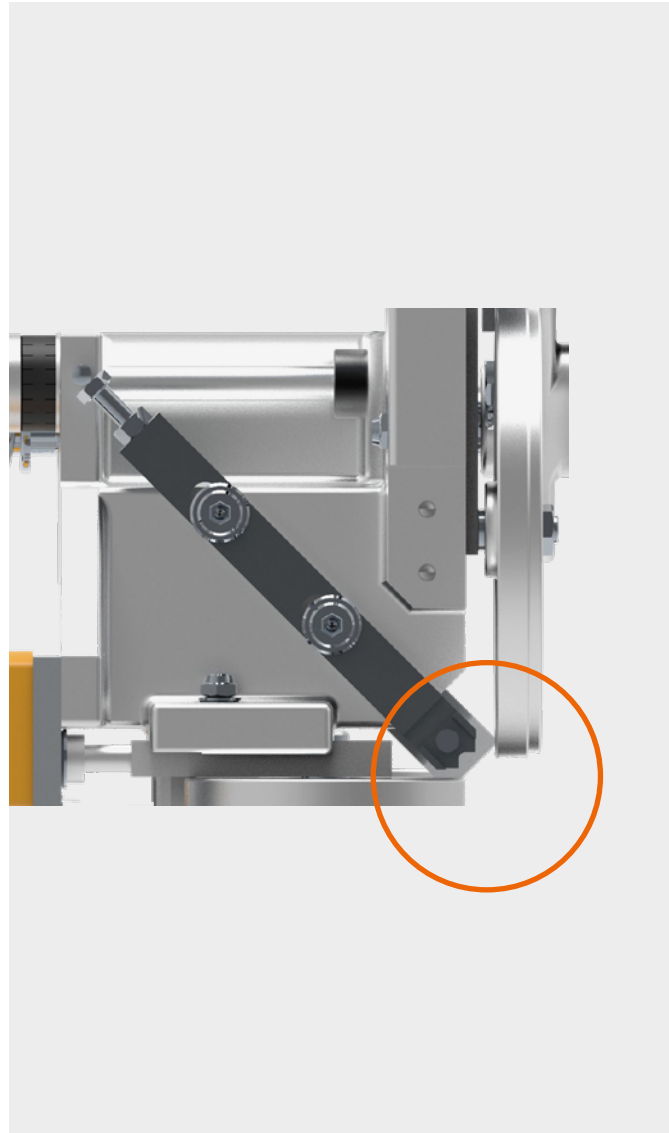
- Radius 1.3 mm
- Radius 2 mm (2-fold)
- Chamfer 45°
- Other profile combinations on request

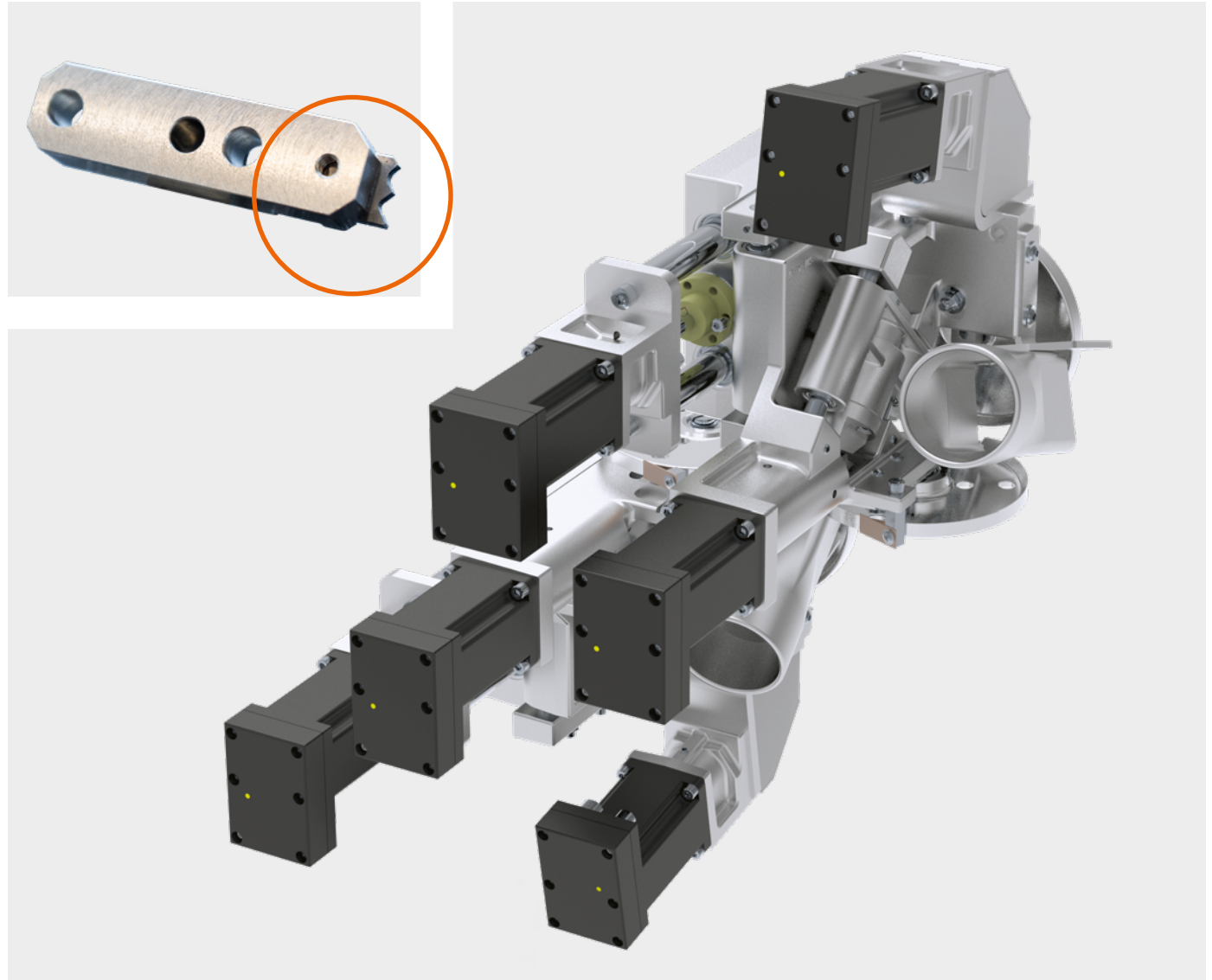


SCRAPER UNIT ZK301 MOT4

For perfect smoothing of radiuses and chamfers on plastic edging. With 4 NC servo axes for exact adjustment of the profile depth when using high-gloss panels with protective films.

- High gloss package with foil compensation included
- Motorized adjustment of all tracing rollers with high-speed NC servo axes
- Blower nozzles for cleaning the tracing area
- Optimized tool geometry to avoid discolouration on plastic edges
- Min. 10 mm – max. 60 mm workpiece thickness





SCRAPER UNIT ZK502 MOT6 MULTI

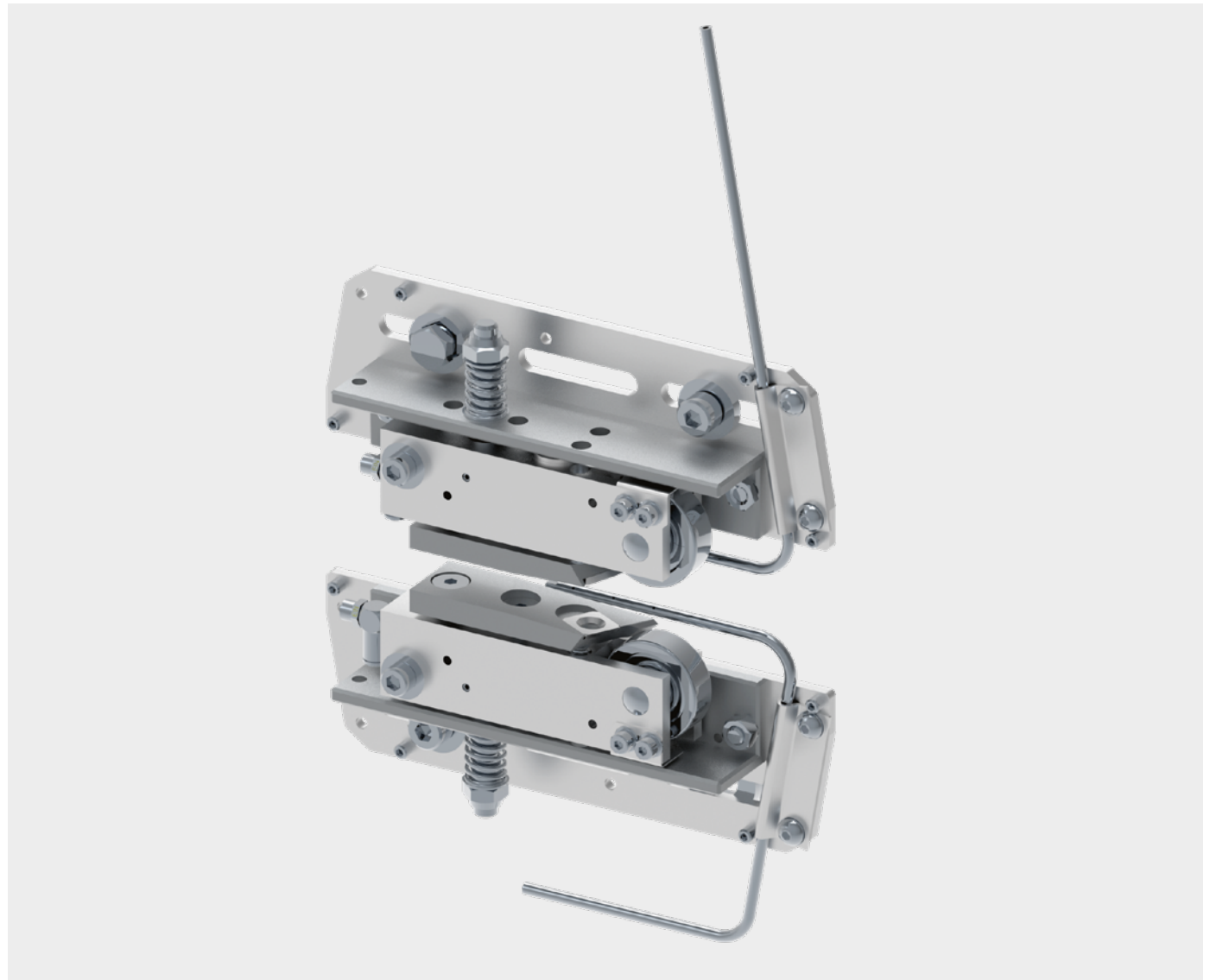
For perfect smoothing of radiuses and chamfers on plastic edging with two profiles. The unit operates with extremely fine tolerance mechanics and high-precision fully digital NC servo axes that ensure positioning with 100% repetition accuracy. The respective profile for the multi-stage tool is selected via touchscreen which moves the unit automatically into position.

- Carbide inserts with radius 1.3 mm and 2 mm
- Other profile variants on request

SURFACE SCRAPE FK702

Clean post-processing of surfaces along the entire length of the panel. The four reversible carbide blades ensure a permanently clean surface result. The two surface scraper blades are separately insert-controlled and can be precisely adjusted. There is no need for tedious reworking and removal of glue residues.

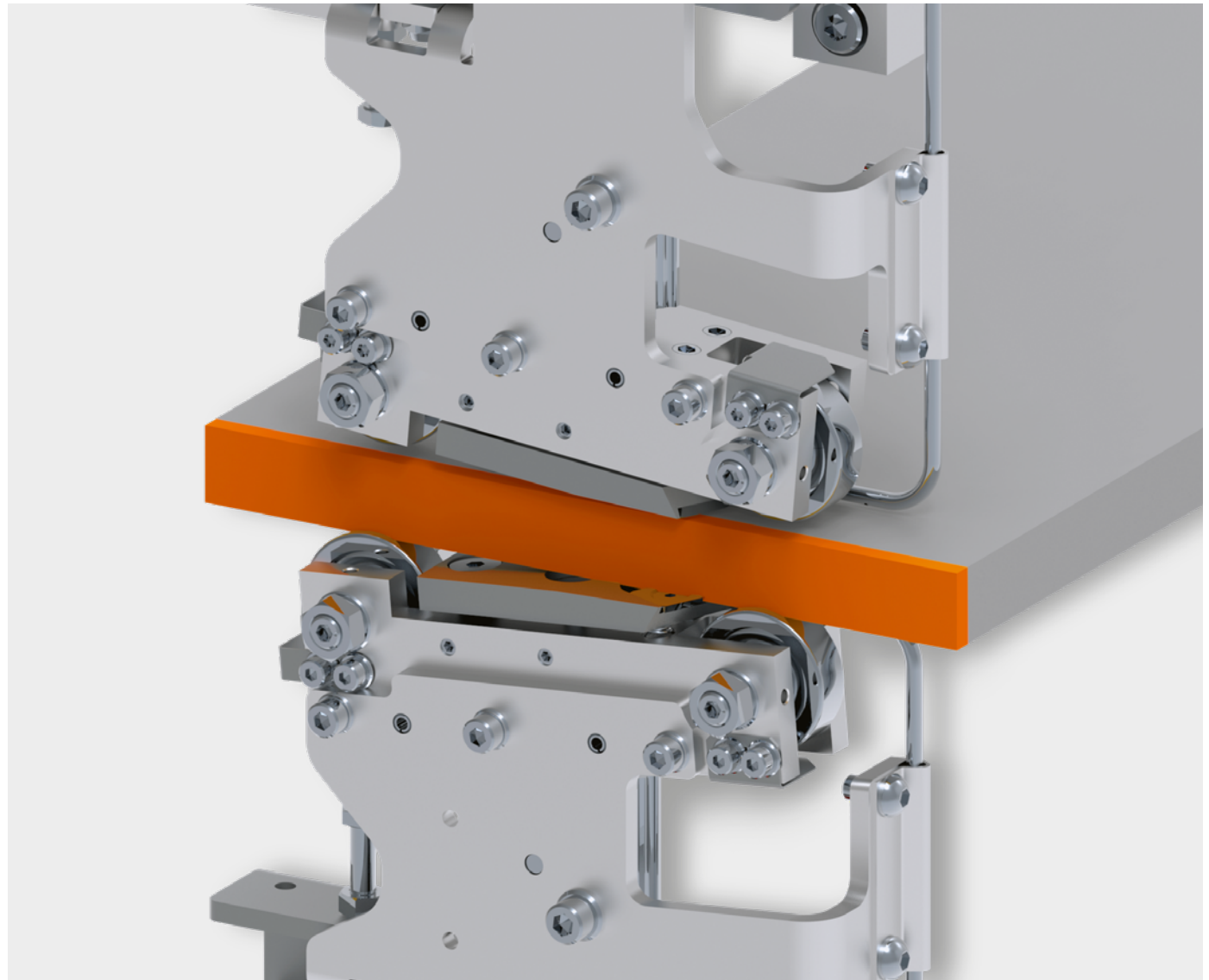
- Application-controlled, for example in solid wood applications
- Blowing nozzles and extraction included



SURFACE SCRAPER FK701

Pre- and post-tracing ensure a clean finish even at high feed rates. The four reversible carbide blades ensure a permanently clean surface result. The two surface scraper blades are separately insert-controlled and can be precisely adjusted. There is no need for manual and tedious reworking at the bench. Both units can be automatically deselected for special applications such as solid wood processing.

- Pre- and post-tracing
- Application-controlled, for example in solid wood applications
- Pneumatic lifting (stroke 20 mm)
- Blowing nozzles and extraction included



BUFFING UNIT SW501

Polishes the edge for a clean, glossy finish.

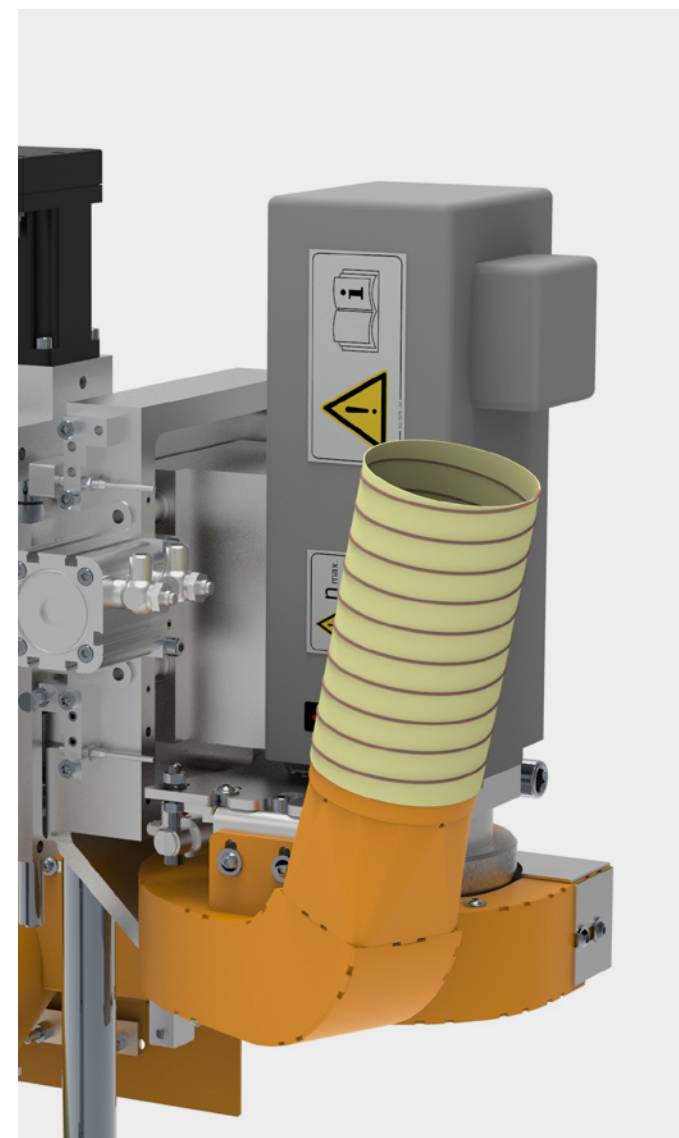
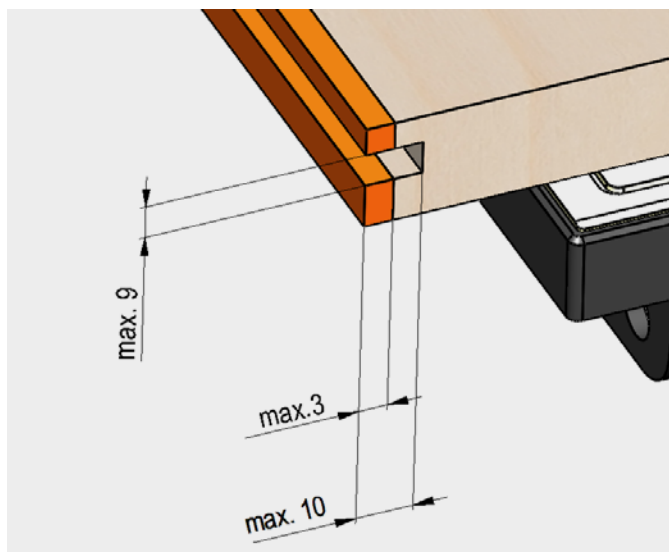
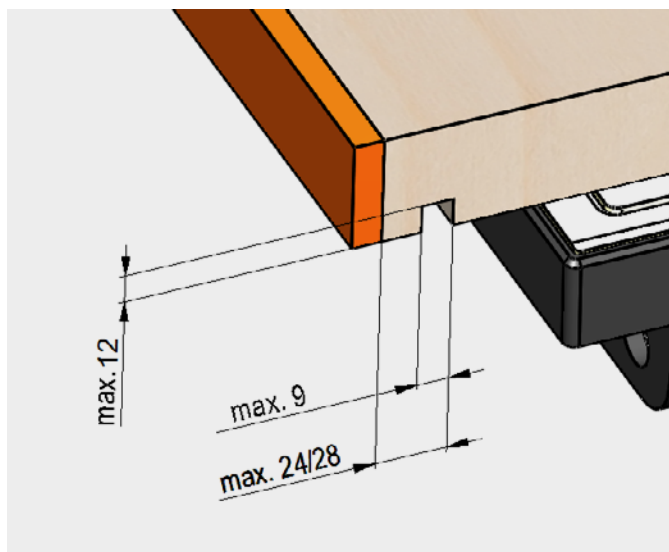
- Textile buffing discs with ideal rotation speed
- Adjustable contact pressure
- Recommended in combination with the spraying device (separating and cleaning agent)



GROOVING UNIT NT701 MOT2

With two NC servo-axes for groove depth adjustment as well as groove positioning via control panel as a standard feature. Pivots 0 – 90 degrees, incl. grid holes at increments of 11.25 degrees. Plunge control included. Optimum chip collection through blowing nozzle and post-extraction hood.

- Motorized adjustment of the entire unit
- Grooves – on the face and in the surface from below
- Machining in synchronism
- With plunge control for inserted back panel grooves
- Incl. 4.2 mm groove cutter (further groove widths on request)



SPRAYING DEVICE

TR501 SPRAYING DEVICE FOR THE INFEED AND FINISHING AREA

Infeed area: Electronically controlled sprayer with release agent

Finishing area: Electronically controlled sprayer with cleaning agent

SPRAYING DEVICE AM501

After pressure unit uses antistatic coolant

SPRAYING DEVICE GM501

After the pressure unit for wetting the edge with lubricant. Recommended for processing high-gloss edges

RELEASE AGENT TR501

Prevents dirt and glue from sticking to the panel

CLEANING AGENT TR501

Removes residual release agent such as dirt and impurities from the panel

ANTISTATIC COOLANT AM501

Prevents static charging of the chips

LUBRICANT AGENT GM501

Ideal for high gloss, matt and sensitive surfaces

